

4

3

2

1

THIS DRAWING IS UNPUBLISHED. RELEASED FOR PUBLICATION JUNE, 2006.
 © COPYRIGHT 2006 BY TYCO ELECTRONICS CORPORATION. ALL RIGHTS RESERVED.

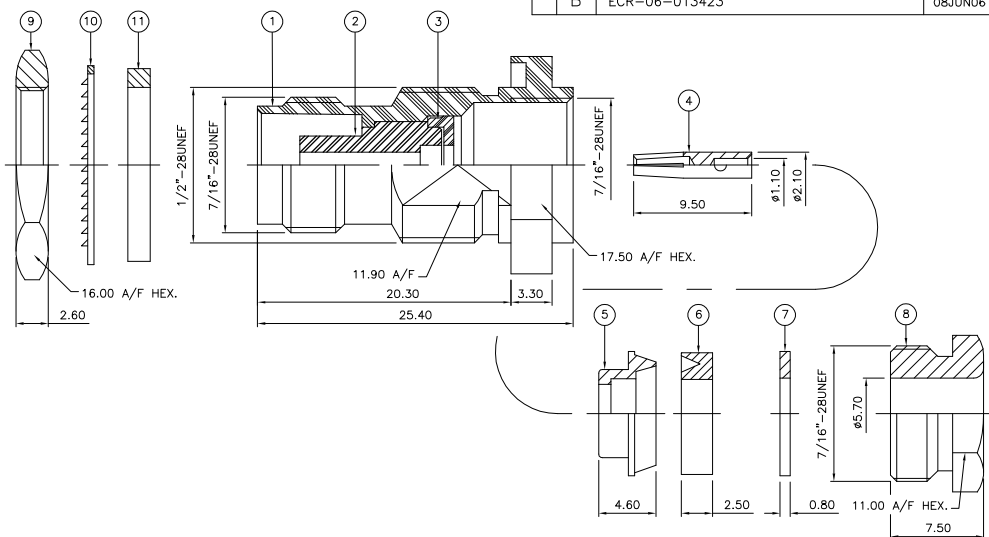
LOC	DIST	REVISIONS			
P	LTR	DESCRIPTION	DATE	DWN	APVD
E	B				
	B	ECR-06-013423	08JUN06	JMS	FWK

- NOTES:**
- ▲ PACK IN ACCORDANCE WITH AMP SPEC 107-3275
 - ▲ 100 TRAY PACK IN ACCORDANCE WITH AMP SPEC 107-3275
 - ▲ Ag PLATING
 - ▲ THIS ITEM MUST BE WHITE
- 5 ELECTRICAL CHARACTERISTICS**
- | | |
|-------------------------------|----------------------------|
| FREQUENCY RANGE: | DC - 11 GHz |
| NOMINAL IMPEDANCE: | 50 Ohm |
| INSULATION RESISTANCE: | 5000 MOhm |
| WORKING VOLTAGE: | 500 Volts RMS at Sea Level |
| DIELECTRIC WITHSTAND VOLTAGE: | 1500 Volts RMS Max |
| CONTACT RESISTANCE: | |
| CENTRE CONTACT: | 1.50 mOhm Max |
| OUTER CONTACT: | 1.00 mOhm Max |
| VSWR @ 4GHz: | 1.30:1 Max |
| INSERTION LOSS dB @ x 3 GHz: | 0.20 Max |

- 6 MECHANICAL CHARACTERISTICS**
- | | |
|-------------------------------|----------------|
| COUPLING NUT RETENTION FORCE: | N/A |
| CABLE RETENTION FORCE: | 170N Min |
| CLAMP NUT RECOMMENDED TORQUE: | 4N |
| MOUNT NUT RECOMMENDED TORQUE: | 4N |
| DURABILITY: | 500 Cycles Min |

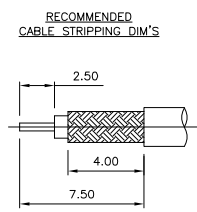
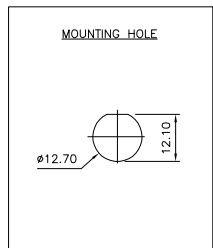
- 7 ENVIRONMENTAL CHARACTERISTICS**
- | | |
|------------------------|------------------|
| OPERATING TEMPERATURE: | -65 to +165 DegC |
|------------------------|------------------|

- 8 FOR TECHNICAL DATA REFER TO YOUR LOCAL TYCO ELECTRONICS SALES OFFICE**
- 9 ALL DIMENSIONS ARE NOMINAL FOR REFERENCE ONLY UNLESS OTHERWISE STATED**



QTY	UNIT	MATERIAL	DESCRIPTION	ITEM
1	1	SILICONE RUBBER	GASKET	11
1	1	STEEL	LOCKWASHER	10
1	1	BRASS	HEXAGONAL NUT	9
1	1	BRASS	CLAMP NUT	8
1	1	BRASS	WASHER	7
1	1	SILICONE RUBBER	GASKET	6
1	1	BRASS	SLEEVE	5
1	1	BRASS	CONTACT	4
1	1	BRASS	WASHER	3
1	1	PTFE	INSULATION	2
1	1	BRASS	BODY	1
6--0	1--0	MATERIAL	DESCRIPTION	ITEM

QUANTITY PER ASSY		PARTS LIST	
1	1	SILICONE RUBBER	GASKET
1	1	STEEL	LOCKWASHER
1	1	BRASS	HEXAGONAL NUT
1	1	BRASS	CLAMP NUT
1	1	BRASS	WASHER
1	1	SILICONE RUBBER	GASKET
1	1	BRASS	SLEEVE
1	1	BRASS	CONTACT
1	1	BRASS	WASHER
1	1	PTFE	INSULATION
1	1	BRASS	BODY
6--0	1--0	MATERIAL	DESCRIPTION



THIS DRAWING IS A CONTROLLED DOCUMENT.		DWN	J. SANDWELL	08JUN06
DIMENSIONS:		CHK	S. PARLOW	08JUN06
mm		APVD	F. WHEELER-KING	08JUN06
TOLERANCES UNLESS OTHERWISE SPECIFIED:		NAME	TNC STRAIGHT BULKHEAD JACK SOLDER	
0 PLC	± .05	PRODUCT SPEC	SILVER PLT 50 OHM	
1 PLC	± .02	APPLICATION SPEC	RG58C/U, 141A/U, URM43, 76, KX15	
2 PLC	± .01	WEIGHT	411-3252	
3 PLC	± .005	CUSTOMER DRAWING	A3 00779 C-1478021	
4 PLC	± .002	SCALE	NTS	
ANGLES	± .001	SHEET	1 OF 1	
FINISH	-	REV	B	

Tyco Electronics Corporation	
Bideford EX39 4HE	
SIZE	A3
CAGE CODE	00779
DRAWING NO	C-1478021
RESTRICTED TO	-

AMP 1470-19 REV 31MAR2000