

THIS DRAWING IS UNPUBLISHED. RELEASED FOR PUBLICATION JUNE ,2006.  
COPYRIGHT 2006 BY TYCO ELECTRONICS CORPORATION. ALL RIGHTS RESERVED.

NOTES:

1. PACK IN ACCORDANCE WITH AMP SPEC 107-3275  
2. 100 TRAY PACK IN ACCORDANCE WITH AMP SPEC 107-3275  
3. Au PLATING  
4. Ni PLATING

5 ELECTRICAL CHARACTERISTICS

FREQUENCY RANGE: DC - 2 GHz  
NOMINAL IMPEDANCE: 75 Ohm  
INSULATION RESISTANCE: 5000 Mohm  
WORKING VOLTAGE: 500 Volts RMS at Sea Level  
DIELECTRIC WITHSTAND VOLTAGE: 1500 Volts RMS Max  
CONTACT RESISTANCE: 1.50 mOhm Max  
CENTRE CONTACT: 0.20 mOhm Max  
OUTER CONTACT: N/A  
VSWR @ xGHz: N/A  
INSERTION LOSS xdb: N/A

6 MECHANICAL CHARACTERISTICS

COUPLING RETENTION FORCE: N/A  
CABLE RETENTION FORCE: N/A  
DURABILITY: 500 Cycles Min

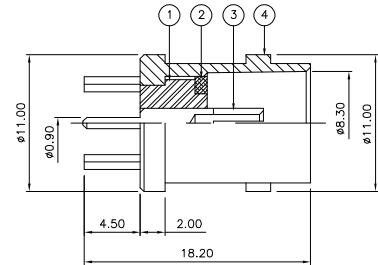
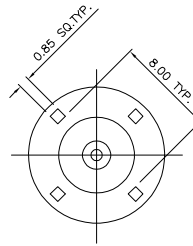
7 ENVIRONMENTAL CHARACTERISTICS

OPERATING TEMPERATURE: -65 to +165 DegC

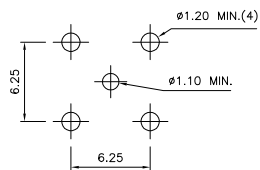
8 FOR TECHNICAL DATA REFER TO YOUR LOCAL TYCO ELECTRONICS SALES OFFICE

9 ALL DIMENSIONS ARE NOMINAL FOR REFERENCE ONLY UNLESS OTHERWISE STATED

LOC		DIST		REVISIONS			
P	LTR	DESCRIPTION		DATE	DWN	APVD	
B		ECR-06-013423		14JUN06	JMS	FWK	



MOUNTING HOLES



THIS DRAWING IS A CONTROLLED DOCUMENT.

DIMENSIONS:	TOLERANCES UNLESS OTHERWISE SPECIFIED:
mm	
0 PLC	± .005
1 PLC	± .005
2 PLC	± .005
3 PLC	± .005
4 PLC	± .005
4 BCC	± .005
ANGLES	± .005
MATERIAL	FINISH
SEE TABLE	-

DWN	J.SANDWELL	14JUN06
CHK	S.PARLOW	14JUN06
APVD	F.WHEELER-KING	14JUN06
PRODUCT SPEC	-	
APPLICATION SPEC	-	
WEIGHT	-	
CUSTOMER DRAWING	-	

		1	1	BRASS		BODY	4
		1	1	BRASS		CONTACT	3
		1	1	BRASS		SLEEVE	2
		1	1	PTFE		INSULATION	1
		6--0	1--0	MATERIAL		DESCRIPTION	ITEM
QUANTITY PER ASSY				PARTS LIST			
06	<b>tyco</b> Tyco Electronics Corporation						
06	<b>Electronics</b> Bideford EX39 4HE						
06	NAME						
	BNC STRAIGHT PCB SOCKET 75 OHM						
	—						
	—						
	RESTRICTED TO						
	SIZE	CAGE CODE	DRAWING NO				
	A3	00779	C-1478051		—		
	SCALE		NTS		SHEET	1	OF 1
					REV	B	