

4

3

2

1

THIS DRAWING IS UNPUBLISHED.  
 RELEASED FOR PUBLICATION  
 BY TYCO ELECTRONICS CORPORATION. ALL RIGHTS RESERVED.

LOC	DIST	REVISIONS			
		DESCRIPTION	DATE	BY	APP
AJ	17				
		D	REVISED PER EC 0514-0485-04	20JAN05	BM JGH

D

D

C

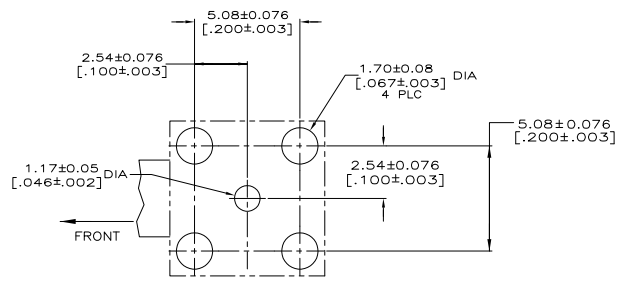
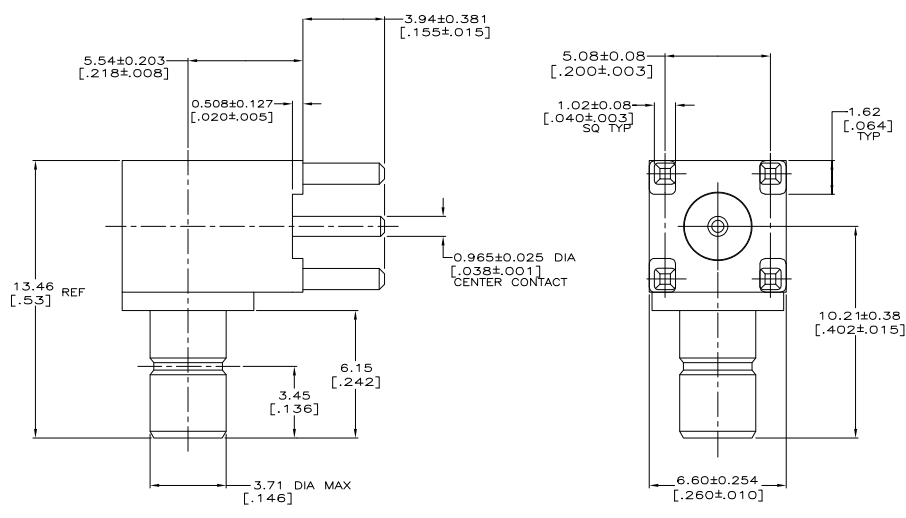
C

B

B

A

A



- 1 MATERIALS:  
 BODY(LEG): ZINC ALLOY (ZAMAK 3).  
 BODY(FRONT): BRASS PER QQ-B-262.  
 CENTER CONTACT: BRASS PER QQ-B-626.  
 INSULATORS: TEFLON PER ASTM-D-1710.  
 END CAP: BRASS PER QQ-B-626.
- 2 FINISH  
 CENTER CONTACT: GOLD PLATE PER MIL-G-45204.  
 BODY(LEG): TIN PLATE PER ASTM-B-545.  
 BODY(FRONT): ELECTROLESS NICKEL PER MIL-C-26074.  
 END CAP: NICKEL PLATE PER QQ-N-290.
- 3. INTERFACE PER MIL-C-39012.

414337-1  
 PART NUMBER

THIS DRAWING IS A CONTROLLED DOCUMENT.		ENR	3/10/92		Tyco Electronics Corporation Harrisburg, Pa 17105-3608	
DIMENSIONS: mm(INCHES)		DRW	4/6/92		NAME JACK,RTANG,SMB/PCB	
TOLERANCES UNLESS OTHERWISE SPECIFIED:		APPRO		PRODUCT SPEC		
0 PLC	± .005	APPRO		APPLICATION SPEC		
1 PLC	± .003	APPRO		WEIGHT		
2 PLC	± .002	APPRO		SIZE		
3 PLC	± .001	APPRO		CASE CODE		
4 PLC	± .0005	APPRO		DRAWING NO		
ANGLES	± .0005	APPRO		RESTRICTED TO		
MATERIAL	1	FINISH		A2 00779 C=414337		
CUSTOMER DRAWING		SCALE		8:1		
		SHEET		1 of 1		
		REV		D		

AMP 1471-9 REV 31MAR2000

414337