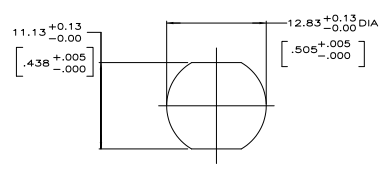
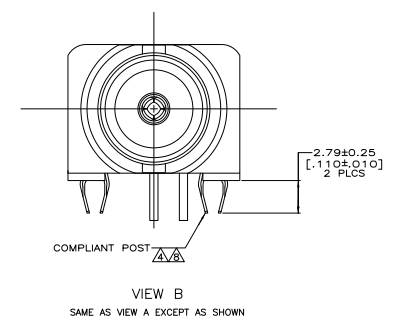
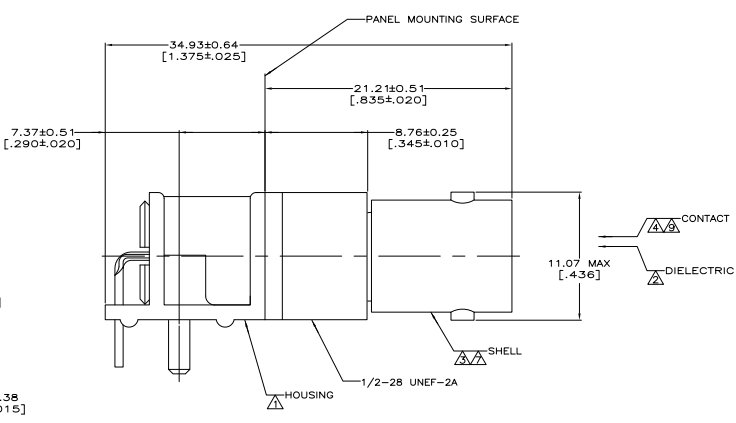
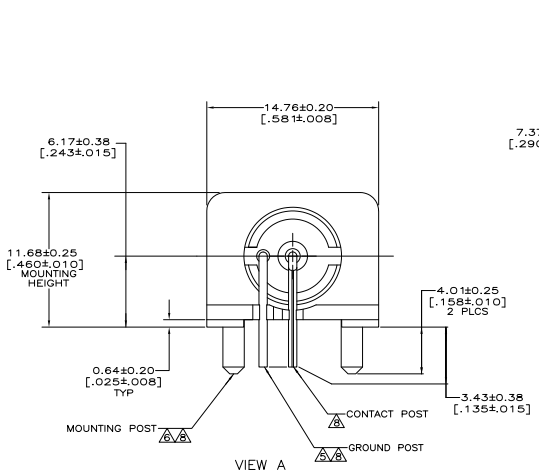
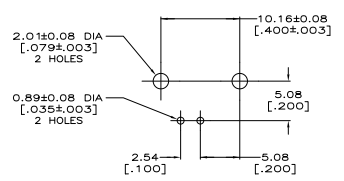


REV	DATE	DESCRIPTION	BY	CHK	APP
AJ 17					
B		REV PER ECO 08-09474			7/22/2008 DW JL

- △ POLYESTER PBT PER MIL-M-24519, TYPE GPT-15F, UL94V-0 RATED, COLOR:BLACK
- △ POLYMETHYLPENTENE, GENERAL PURPOSE
- △ ZINC PER QQ-Z-363
- △ PHOSPHOR BRONZE PER QQ-B-750
- △ BRASS PER ASTM-B-453
- △ BRASS PER ASTM-B-16
- △ NICKEL PLATE PER QQ-N-290, 3.81 μm [.000150] MINIMUM THICK.
- △ TIN PLATE PER ASTM-B-545, 3.81 μm [.000150] MINIMUM THICK.
- △ GOLD PLATE PER ASTM-B-488, 0.08 μm [.000003] MINIMUM THICK.
- 10. SEE INSTRUCTION SHEET 408-2769.



RECOMMENDED PANEL CUTOUT  
SCALE 4:1



PCB CONFIGURATION  
SCALE 4:1

B	5415105-2
A	5415105-1
VIEW	PART NUMBER

THIS DRAWING IS A CONTROLLED DOCUMENT.		REV	DATE	DESCRIPTION	BY	CHK	APP
UNLESS OTHERWISE SPECIFIED:	ALL DIMENSIONS ARE IN MILLIMETERS.	UNLESS OTHERWISE SPECIFIED:	UNLESS OTHERWISE SPECIFIED:	UNLESS OTHERWISE SPECIFIED:	UNLESS OTHERWISE SPECIFIED:	UNLESS OTHERWISE SPECIFIED:	UNLESS OTHERWISE SPECIFIED:
FINISHES:	UNLESS OTHERWISE SPECIFIED:	UNLESS OTHERWISE SPECIFIED:	UNLESS OTHERWISE SPECIFIED:	UNLESS OTHERWISE SPECIFIED:	UNLESS OTHERWISE SPECIFIED:	UNLESS OTHERWISE SPECIFIED:	UNLESS OTHERWISE SPECIFIED:
SEE NOTES 1 THRU 6	SEE NOTES 7 THRU 10	SEE NOTES 11 THRU 15	SEE NOTES 16 THRU 20	SEE NOTES 21 THRU 25	SEE NOTES 26 THRU 30	SEE NOTES 31 THRU 35	SEE NOTES 36 THRU 40
CUSTOMER DRAWING		DATE	SIZE	SCALE	REV	BY	APP
		07/22/08	A1	6:1	1	DW	JL