

4

3

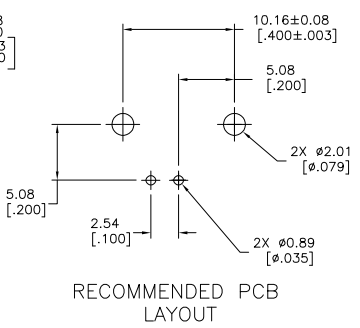
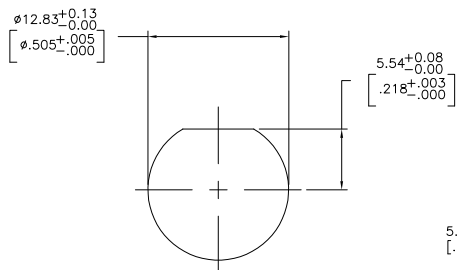
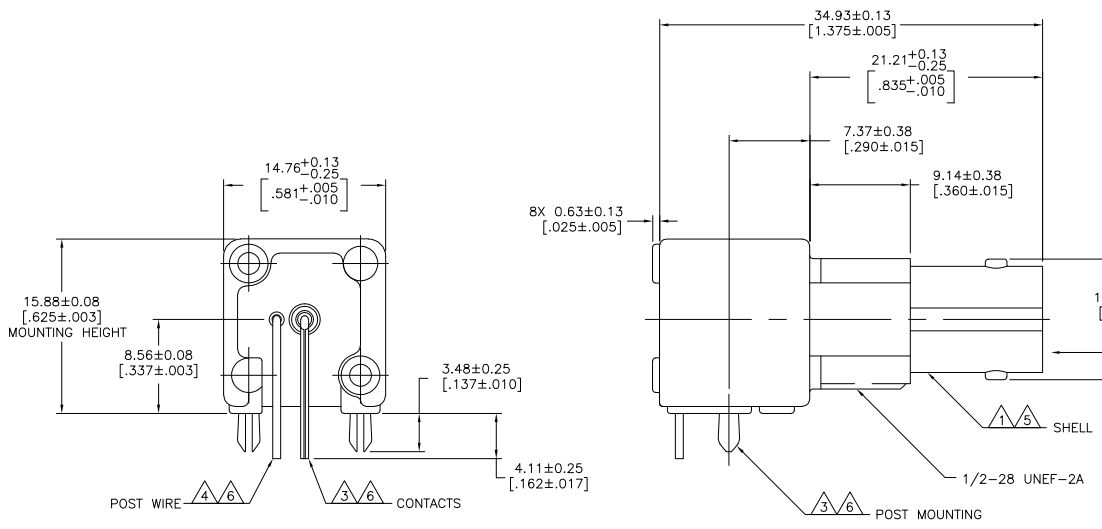
2

1

THIS DRAWING IS UNPUBLISHED. RELEASED FOR PUBLICATION.  
 © COPYRIGHT BY TYCO ELECTRONICS CORPORATION. ALL RIGHTS RESERVED.

LOC	DIST	REVISIONS			
		P	LR	DATE	BY
AJ	17	A		REVISD PER EC 0514-0150-05	28OCT2005 REH JL

- 1 ZINC PER QQ-Z-363.
- 2 POLYMETHYLPENTENE PER ASTM-D-1238.
- 3 PHOSPHOR BRONZE PER QQ-B-750.
- 4 BRASS PER ASTM-B-453.
- 5 NICKEL PLATE PER QQ-N-290, 3.81 μm [.000150] MIN THICKNESS.
- 6 TIN PLATE PER ASTM-B-545, 3.81 μm [.000150] MIN THICKNESS.
- 7. USE INSTRUCTION SHEET 408-2769.



5415419-1  
 PART NUMBER

THIS DRAWING IS A CONTROLLED DOCUMENT.		DWG: G. ATTADA 22APR2005 CHK: J. HAVENER 22APR2005 J. LIPPERT 22APR2005 PRODUCT SPEC: 108-12078 APPLICATION SPEC:	Tyco Electronics Corporation Harrisburg, PA 17105-3608
DIMENSIONS: mm [INCHES] 0 PLC ± - 1 PLC ± - 2 PLC ± 0.05 (.002) 3 PLC ± - 4 PLC ± - ANGLE ± - FINISH	TO MANUFACTURER'S DIMENSIONS UNLESS SPECIFIED.	SIZE: A2 CAGE CODE: 00779 DRAWING NO: 5415419	RESTRICTED TO: - SCALE: 4:1 SHEET: 1 of 1 REV: A
MATERIAL: SEE NOTES		CUSTOMER DRAWING	

AMP 1471-9 REV 31MAR2000

5415419

A