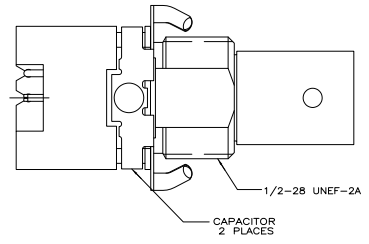
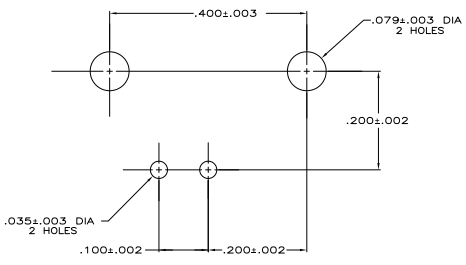
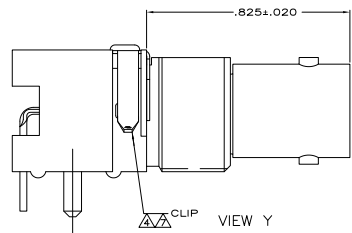
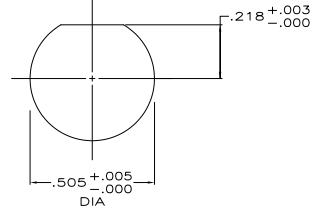
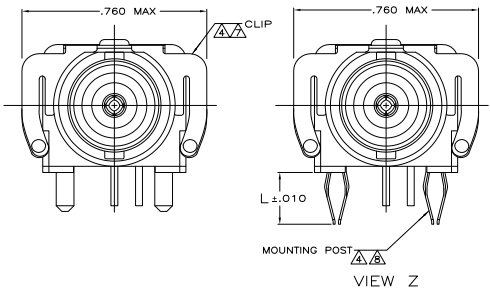
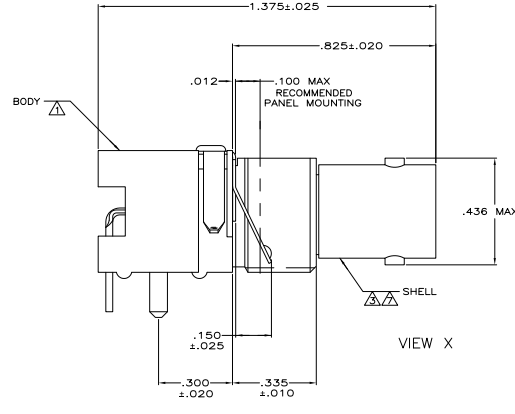
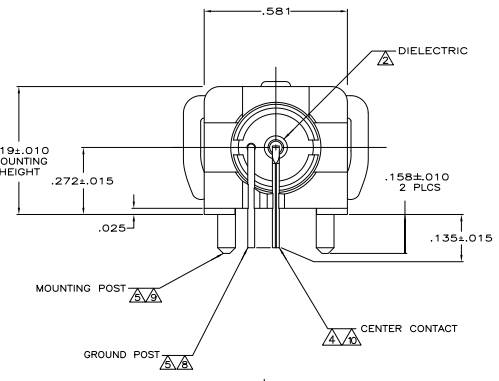


THIS DRAWING IS UNPUBLISHED
 ALL RIGHTS RESERVED
 © 2008 BY TTI ELECTRONICS CORPORATION

REV	DATE	DESCRIPTION	BY	CHK
16				
AB	REVISED PER ECO-08-009474		DW	JL
AB1	REVISED PER ECO-09-021826		128909	KK AEG



- ▲ POLYESTER, PBT, BLACK, PER MIL-M-24519.
- ▲ POLYMETHYLENE GENERAL PURPOSE.
- ▲ ZINC PER QQ-Z-363.
- ▲ PHOSPHOR BRONZE PER QQ-B-750.
- ▲ BRASS PER QQ-B-626.
- ▲ BRASS PER ASTM-B-453.
- ▲ NICKEL PL PER QQ-N-290.
- ▲ TIN PLATE PER ASTM-B-545.
- ▲ TIN PLATE PER ASTM-B-545.
- ▲ SELECTIVELY GOLD PLATED ON INTERFACE AREA PER MIL-G-45204, .000030 THK, TIN PLATED ON SOLDER TAIL PER ASTM-B-545, ALL OVER NICKEL PL PER QQ-N-290.
- ▲ OBSOLETE PARTS: OBSOLETE CIS STREAMLINING PER D.RENAUD/D.SINISI



REVISION	DESCRIPTION	VIEW X	VIEW Y	VIEW Z	CAPACITANCE & VOLTAGE	PART NO
[OBSOLETE]	-	VIEW X	VIEW X	VIEW X	1000 pf, 2200 VDC	1-413515-1
SUPERSEDED BY 413515-2	-	VIEW X OR Y	VIEW X	VIEW X	9400 pf, 1500 VDC	1-413515-0
					9400 pf, 1500 VDC	413515-9
SUPERSEDED BY 3413515-8					9400 pf, 1500 VDC	413515-8
					7900 pf, 1600 VDC	413515-7
SUPERSEDED BY 413515-7					7900 pf, 1600 VDC	413515-6
SUPERSEDED BY 413515-2					9400 pf, 1500 VDC	413515-5
SUPERSEDED BY 413515-2					9400 pf, 500 VDC	413515-4
[OBSOLETE]					20000 pf, 500 VDC	413515-3
					9400 pf, 1500 VDC	413515-2
SUPERSEDED BY 413515-2					9400 pf, 500 VDC	413515-1

THIS DRAWING IS A CONTROLLED DOCUMENT.

DATE: 108-1269

SIZE: 4.1

Customer Drawing

TTI Electronics Corporation
 Middletown, PA 17057

JACK DECOUPLER,
 RIGHT ANGLE LOW PROFILE,
 SERIES BNC

REVISED TO: A100779 G=413515