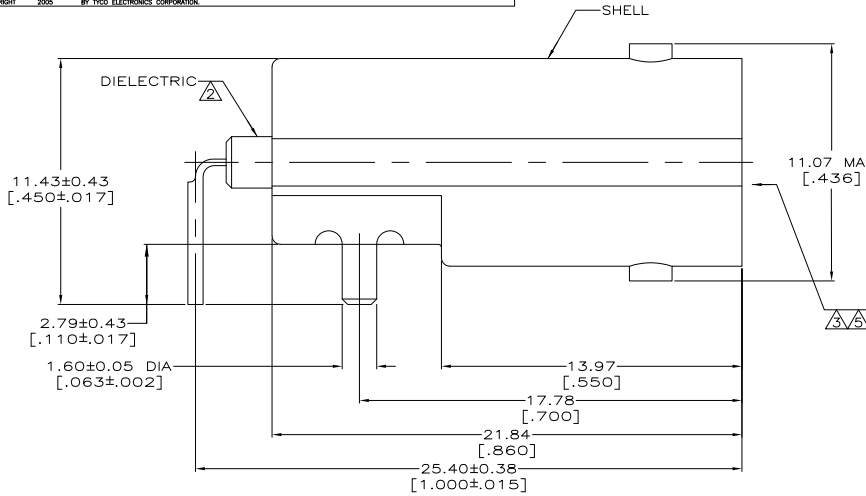
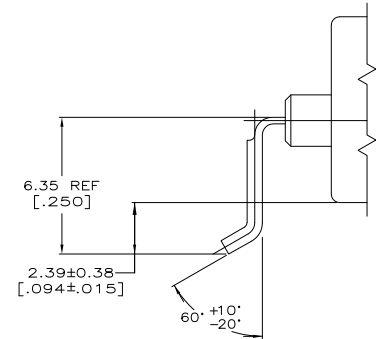


THIS DRAWING IS UNPUBLISHED. RELEASED FOR PUBLICATION. COPYRIGHT 2005 BY TYCO ELECTRONICS CORPORATION. ALL RIGHTS RESERVED.

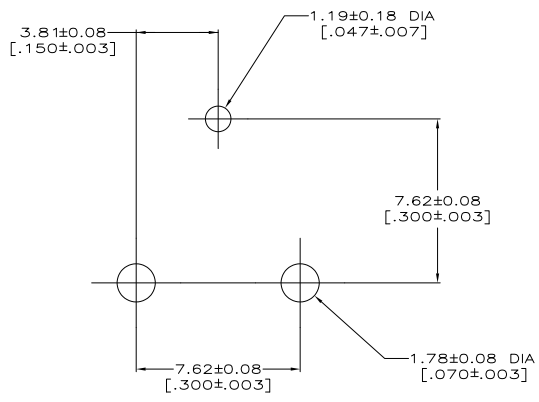
REV	DATE	DESCRIPTION	BY	APP'D
J	04NOV05	REVISED PER EC 0514-0457-04	TS	JL
J1	12SEP09	REVISED PER ECO-09-021826	KK	AEG



- ▲ ZINC PER QQ-Z-363.
- ▲ POLYMETHYLPENTENE, GENERAL PURPOSE.
- ▲ PHOSPHOR BRONZE PER QQ-B-750.
- ▲ NICKEL PLATE PER QQ-N-290, 3.81 μm [.0004150] MINIMUM THICK.
- ▲ GOLD PLATE PER MIL-G-45204, 0.76 μm [.000030] MINIMUM THICK.
- ▲ ZAMAK 8
- ▲ TIN PLATE PER ASTM-B-545, 3.81 μm [.000150] MINIMUM THICK.
- ▲ OBSOLETE PARTS: OBSOLETE CIS STREAMLINING PER D.RENAUD/D.SINISI



FOR 414373-3 AND 414373-4 ONLY



SUGGESTED PCB CONFIGURATION

OBSOLETE	▲	▲	414373-4
OBSOLETE	▲	▲	414373-3
OBSOLETE	▲	▲	<del>414373-2</del>
	▲	▲	414373-1

THIS DRAWING IS A CONTROLLED DOCUMENT.		DATE	BY	APPROVED	REVISIONS
DRAWN BY: LIPPETT		05/05/02	TS	JL	
CHECKED BY: GABANY		10/01/02	TS	JL	
DESIGNED BY: GABANY		10/01/02	TS	JL	
PRODUCT SPEC: 108-12078					
APPLICATION SPEC:					
MATERIAL: SEE NOTES 1-3, 6		WEIGHT:	SIZE: A2	CAGE CODE: 00779	DRAWING NO: 414373
FINISH: SEE NOTES 4-5		CUSTOMER DRAWING	SCALE: 8:1	SHEET: 1 of 1	REV: J1