

4

3

2

1

THIS DRAWING IS UNPUBLISHED. RELEASED FOR PUBLICATION JAN. 2006.
 © COPYRIGHT 2006 BY TYCO ELECTRONICS CORPORATION. ALL RIGHTS RESERVED.

LOC	DIST	REVISIONS			
P	LTR	DESCRIPTION	DATE	DWN	APVD
C		ECR-05-017969	10JAN06	JMS	FWK

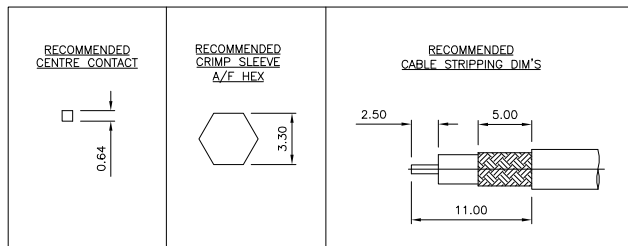
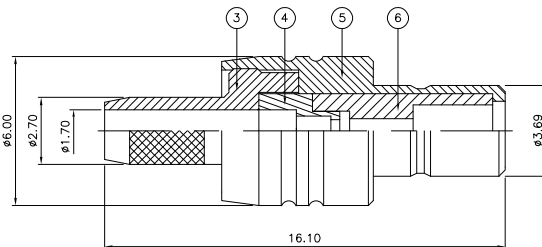
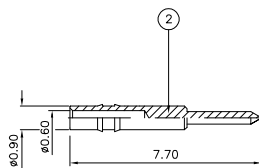
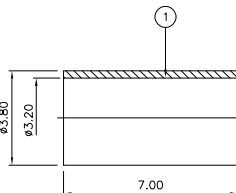
NOTES:

- 1 PACK IN ACCORDANCE WITH AMP SPEC 107-3275
- 2 100 TRAY PACK IN ACCORDANCE WITH AMP SPEC 107-3275
- 3 Au PLATING
- 4 HAND TOOL : 9-1478240-0
- 5 DIE SET : 9-1478248-0
- 6 ELECTRICAL CHARACTERISTICS

FREQUENCY RANGE:	DC - 4 GHz
NOMINAL IMPEDANCE:	50 Ohm
INSULATION RESISTANCE:	1000 MOhm
WORKING VOLTAGE:	250 Volts RMS at Sea Level
DIELECTRIC WITHSTAND VOLTAGE:	750 Volts RMS Max
CONTACT RESISTANCE:	
CENTRE CONTACT:	6.00 mOhm Max
OUTER CONTACT:	1.00 mOhm Max
VSWR @ 3GHz:	1.35:1
INSERTION LOSS dB @ x 1.5 GHz:	0.30 Max
- 7 MECHANICAL CHARACTERISTICS

COUPLING NUT RETENTION FORCE:	N/A
CABLE RETENTION FORCE:	
RG174A/U, 188A/U, 316/U, URM95:	85N Min
DURABILITY:	500 Cycles Min
- 8 ENVIRONMENTAL CHARACTERISTICS

OPERATING TEMPERATURE:	-65 to +165 DegC
------------------------	------------------



THIS DRAWING IS A CONTROLLED DOCUMENT.

DIMENSIONS:	TOLERANCES UNLESS OTHERWISE SPECIFIED:
mm	
0 PLC	± .05
1 PLC	± .02
2 PLC	± .01
3 PLC	± .01
4 PLC	± .01
ANGLES	± .05

MATERIAL FINISH: SEE TABLE

DWN	J. SANDWELL	10JAN06
CHK	S. PARLOW	10JAN06
APVD	F. WHEELER-KING	10JAN06
NAME	SMB STRAIGHT JACK CRIMP 50 OHM	
PRODUCT SPEC	RG174A/U, 188A/U, 316/U, URM95, KX3B, KX22A	
APPLICATION SPEC	-	
411-3247	SIZE	A3
WEIGHT	CAGE CODE	00779
CUSTOMER DRAWING	DRAWING NO	1337477
SCALE	NTS	SHEET 1 OF 1
REV	C	

QTY	DESCRIPTION	ITEM
1	PTFE	INSULATION
1	BRASS	BODY
1	PE	INSULATION
1	BRASS	CHASSIS
1	BRASS	CONTACT
1	BRASS	FERRULE
6	MATERIAL	DESCRIPTION