

4

3

2

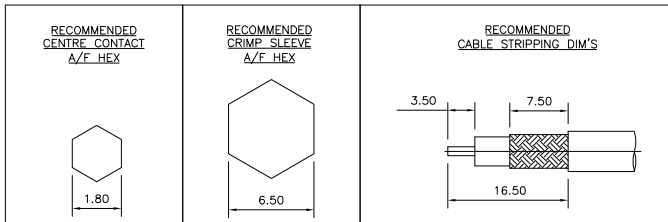
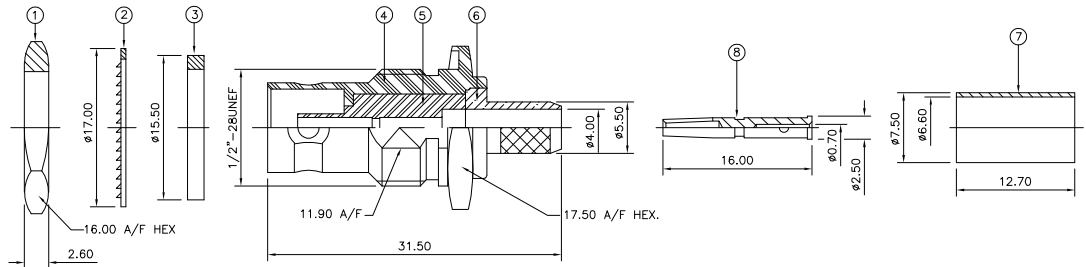
1

THIS DRAWING IS UNPUBLISHED. RELEASED FOR PUBLICATION NOV. 2005.
COPYRIGHT 2005 BY TYCO ELECTRONICS CORPORATION. ALL RIGHTS RESERVED.

LOC	DIST	REVISIONS					
		P	LTR	DESCRIPTION	DATE	DWN	APVD
E	B		C	ECR-05-016219	24NOV05	JMS	FWK

NOTES:

1. PACK IN ACCORDANCE WITH AMP SPEC 107-3275
2. 100 TRAY PACK IN ACCORDANCE WITH AMP SPEC 107-3275
3. Ag PLATING
4. THIS ITEM MUST BE WHITE
5. HAND TOOL : 9-1478240-0
6. DIE SET : 9-1478242-0
7. ELECTRICAL CHARACTERISTICS
- | | |
|-------------------------------|----------------------------|
| FREQUENCY RANGE: | DC - 2 GHz |
| NOMINAL IMPEDANCE: | 75 Ohm |
| INSULATION RESISTANCE: | 5000 MOhm |
| WORKING VOLTAGE: | 500 Volts RMS at Sea Level |
| DIELECTRIC WITHSTAND VOLTAGE: | 1500 Volts RMS Max |
| CONTACT RESISTANCE: | |
| CENTRE CONTACT: | 1.50 mOhm Max |
| OUTER CONTACT: | 0.20 mOhm Max |
| VSWR @ 2GHz: | 1.20:1 Max |
| INSERTION LOSS dB @ x 2 GHz: | 0.20 Max |
8. MECHANICAL CHARACTERISTICS
- | | |
|-------------------------------|----------------|
| COUPLING RETENTION FORCE: | N/A |
| CABLE RETENTION FORCE: | 170N Min |
| MOUNT NUT RECOMMENDED TORQUE: | 4N |
| DURABILITY: | 500 Cycles Min |
9. ENVIRONMENTAL CHARACTERISTICS
- | | |
|------------------------|------------------|
| OPERATING TEMPERATURE: | -65 to +165 DegC |
|------------------------|------------------|



QTY	1	1	MATERIAL	DESCRIPTION	ITEM
	1	1	BRASS	CONTACT	8
	1	1	BRASS	FERRULE	7
	1	1	BRASS	CHASSIS	6
	1	1	PTFE	INSULATION	5
	1	1	BRASS	BODY	4
	1	1	SILICON RUBBER	GASKET	3
	1	1	STEEL	LOCKWASHER	2
	1	1	BRASS	HEX NUT	1
	6--0	1--0			

THIS DRAWING IS A CONTROLLED DOCUMENT.		DWN J.SANDWELL 24NOV05	Tyco Electronics Corporation	
DIMENSIONS: mm		CHK S.PARLOW 24NOV05	Bldeford EX39 4HE	
TOLERANCES UNLESS OTHERWISE SPECIFIED:		APVD F.WHEELER-KING 24NOV05	NAME	
0 PLC ±		PRODUCT SPEC	BNC BULKHEAD JACK REAR MOUNT CRIMP 75 OHM	
1 PLC ±		APPLICATION SPEC	RG59B/U, 62A/U, 140/U, 210/U, URM90,	
2 PLC ±		411-3247	KX6A, KX25, KX52, KX53	
3 PLC ±		WEIGHT	SIZE CAGE CODE DRAWING NO	
4 PLC ±		CUSTOMER DRAWING	A3 00779 C=1337436	
MATERIAL SEE TABLE		FINISH	RESTRICTED TO	
			SCALE NTS SHEET 1 of 1 REV C	

AMP 1470-19 REV 31MAR2000