

4

3

2

1

THIS DRAWING IS UNPUBLISHED. RELEASED FOR PUBLICATION JUNE, 2006.  
 © COPYRIGHT 2006 BY TYCO ELECTRONICS CORPORATION. ALL RIGHTS RESERVED.

LOC	DIST	REVISIONS			
P	LTR	DESCRIPTION	DATE	DWN	APVD
C		REVISED PER ECO-09-018312	15AUG2009	AM	BOB

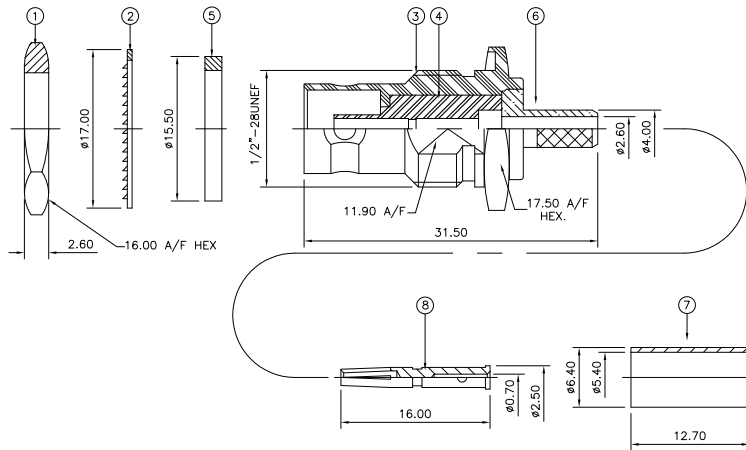
NOTES:

- 1 PACK IN ACCORDANCE WITH AMP SPEC 107-3275
- 2 100 TRAY PACK IN ACCORDANCE WITH AMP SPEC 107-3275
- 3 Au PLATING
- 4 Ni PLATING
- 5 THIS ITEM MUST BE WHITE
- 6 HAND TOOL : 9-1478240-0
- 7 DIE SET : 9-1478242-0
- 8 ELECTRICAL CHARACTERISTICS
 

FREQUENCY RANGE:	DC - 2 GHz
NOMINAL IMPEDANCE:	75 Ohm
INSULATION RESISTANCE:	5000 MOhm
WORKING VOLTAGE:	500 Volts RMS at Sea Level
DIELECTRIC WITHSTAND VOLTAGE:	1500 Volts RMS Max
CONTACT RESISTANCE:	
CENTRE CONTACT:	1.50 mOhm Max
OUTER CONTACT:	0.20 mOhm Max
VSWR @ 2GHz:	1.20:1 Max
INSERTION LOSS dB @ x 2 GHz:	0.20 Max
- 9 MECHANICAL CHARACTERISTICS
 

COUPLING RETENTION FORCE:	N/A
CABLE RETENTION FORCE:	170N Min
MOUNT NUT RECOMMENDED TORQUE:	4N
DURABILITY:	500 Cycles Min
- 10 ENVIRONMENTAL CHARACTERISTICS
 

OPERATING TEMPERATURE:	-65 to +165 DegC
------------------------	------------------
- 11 FOR TECHNICAL DATA REFER TO YOUR LOCAL TYCO ELECTRONICS SALES OFFICE
- 12 ALL DIMENSIONS ARE NOMINAL FOR REFERENCE ONLY UNLESS OTHERWISE STATED



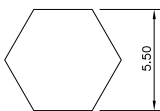
MOUNTING HOLE



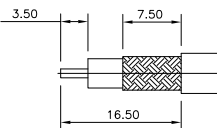
RECOMMENDED CENTRE CONTACT A/F HEX



RECOMMENDED CRIMP SLEEVE A/F HEX



RECOMMENDED CABLE STRIPPING DIM'S



OBSOLETE

QTY	DESCRIPTION	MATERIAL	ITEM
1	CONTACT	BRASS	8
1	FERRULE	BRASS	7
1	CHASSIS	BRASS	6
1	GASKET	SILICON RUBBER	5
1	INSULATION	PTFE	4
1	BODY	BRASS	3
1	LOCKWASHER	STEEL	2
1	HEX NUT	BRASS	1
6--0	MATERIAL		1--0

PART REV.: B

THIS DRAWING IS A CONTROLLED DOCUMENT.

DIMENSIONS:	TOLERANCES UNLESS OTHERWISE SPECIFIED:
mm	
0 PLC	± .05
1 PLC	± .03
2 PLC	± .02
3 PLC	± .01
4 PLC	± .01
ALL ANGLES	± .05

MATERIAL FINISH: SEE TABLE

DWN	J. SANDWELL	22JUN06	Tyco Electronics Corporation Bideford EX39 4HE
CHK	S. PARLOW	22JUN06	
APVD	E. WHEELER-KING	22JUN06	
NAME	BNC BULKHEAD JACK REAR MOUNT CRIMP 75 OHM BT2002		
APPLICATION SPEC	411-3247	WEIGHT	RESTRICTED TO
CUSTOMER DRAWING	SIZE A3	CAGE CODE 00779	DRAWING NO. 1478098
SCALE NTS	SHEET 1	OF 1	REV C