

4

3

2

1

THIS DRAWING IS UNPUBLISHED. RELEASED FOR PUBLICATION FEB. 2006.
 © COPYRIGHT 2006 BY TYCO ELECTRONICS CORPORATION. ALL RIGHTS RESERVED.

LOC	DIST	REVISIONS			
P	LTR	DESCRIPTION	DATE	DWN	APVD
E	B	C1	ECO-09-027745	21DEC2009	RITA BOB

NOTES:

- △ PACK IN ACCORDANCE WITH AMP SPEC 107-3275
- △ 100 TRAY PACK IN ACCORDANCE WITH AMP SPEC 107-3275
- △ Au PLATING

4 ELECTRICAL CHARACTERISTICS

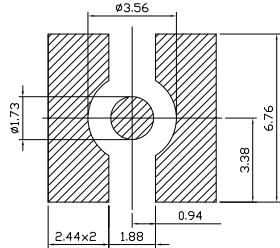
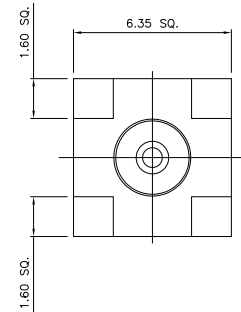
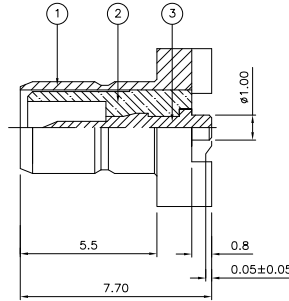
FREQUENCY RANGE: DC - 4 GHz
 NOMINAL IMPEDANCE: 50 Ohm
 INSULATION RESISTANCE: 1000 MOhm
 WORKING VOLTAGE: 250 Volts RMS at Sea Level
 DIELECTRIC WITHSTAND VOLTAGE: 750 Volts RMS Max
 CONTACT RESISTANCE: 6.00 mOhm Max
 CENTRE CONTACT: 1.00 mOhm Max
 OUTER CONTACT: 1.00 mOhm Max

5 MECHANICAL CHARACTERISTICS

DURABILITY: 500 Cycles Min

6 ENVIRONMENTAL CHARACTERISTICS

OPERATING TEMPERATURE: -65 to +165 DegC



RECOMMENDED PCB LAYOUT

QTY	DESCRIPTION	MATERIAL	DESCRIPTION	ITEM
1	CONTACT	BRASS		3
1	INSULATION	PTFE		2
1	BODY	BRASS		1
6--0		1--0		

QUANTITY PER ASSY		PARTS LIST	
1	1	BRASS	CONTACT
1	1	PTFE	INSULATION
1	1	BRASS	BODY
6--0	1--0		

THIS DRAWING IS A CONTROLLED DOCUMENT.		DWN	J. SANDWELL	13FEB06
DIMENSIONS:		CHK	S. PARLOW	13FEB06
mm	TOLERANCES UNLESS OTHERWISE SPECIFIED:	APVD	F. WHEELER-KING	13FEB06
0 PLC	± -	NAME		
1 PLC	± 0.2	SMB SURFACE MOUNT STRAIGHT		
2 PLC	± 0.1	PCB SOCKET 50 OHM		
3 PLC	± -	PRODUCT SPEC		
4 PLC	± -	APPLICATION SPEC		
ANGLES	± -	WEIGHT		
MATERIAL	FINISH	SIZE	CAGE CODE	DRAWING NO
SEE TABLE	-	A3	00779	1337604
		CUSTOMER DRAWING		RESTRICTED TO
		SCALE		NTS
		SHEET		1 OF 1
		REV		C1