

4

3

2

1

THIS DRAWING IS UNPUBLISHED. RELEASED FOR PUBLICATION NOV. 2003.  
 © COPYRIGHT 2003 BY TYCO ELECTRONICS CORPORATION. ALL RIGHTS RESERVED.

LOC		DIST		REVISIONS			
P	LTR	DESCRIPTION		DATE	DWN	APVD	
	C	ECR-07-000535		09/01/07	AM	FWK	

- 1 SINGLE PACK IN ACCORDANCE WITH SPEC 107-3275
- 2 100 TRAY PACK IN ACCORDANCE WITH SPEC 107-3275
- 3 Au PLATING
- 4 FLASH Au PLATING

**ELECTRICAL CHARACTERISTICS**

FREQUENCY RANGE: 50 Ohm DC - 6GHz  
 INSULATION RESISTANCE: 1000MOhm  
 WORKING VOLTAGE: 335V RMS at Sea Level  
 DIELECTRIC WITHSTAND VOLTAGE: 500V RMS Max  
 CONTACT RESISTANCE: 5.00 MOhm Max

**MECHANICAL CHARACTERISTICS**

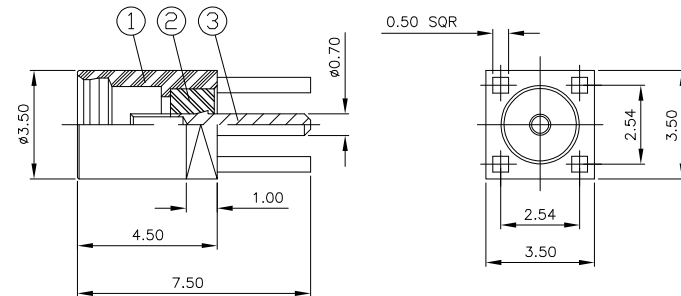
DURABILITY: 500 Cycles Min

**ENVIRONMENTAL CHARACTERISTICS**

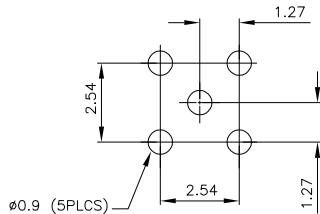
OPERATING TEMPERATURE: -65°C to +165°C

5 FOR TECHNICAL DATA REFER TO YOUR LOCAL TYCO ELECTRONICS SALES OFFICE

6 ALL DIMENSIONS ARE NOMINAL FOR REFERENCE ONLY UNLESS OTHERWISE STATED



**RECOMMENDED PCB LAYOUT**



QUANTITY PER ASSY	MATERIAL	DESCRIPTION	ITEM
1	BERYLLIUM COPPER	SOCKET	3
1	PTFE	INSULATOR	2
1	BRASS	BODY	1
6--0	1--0		

THIS DRAWING IS A CONTROLLED DOCUMENT.		DWN J. SANDWELL 12NOV03	Tyco Electronics Corporation Stanmore, Middlesex, HA7 4RS	
DIMENSIONS: MM	TOLERANCES UNLESS OTHERWISE SPECIFIED:	CHK S. PARLOW 12NOV03	NAME F. WHEELER-KING 12NOV03	
0 PLC ± -	1 PLC ± -	PRODUCT SPEC 108-3462	MMCX STRAIGHT PCB MOUNT SOCKET RECEPTACLE 50 OHMS	
2 PLC ± -	3 PLC ± -	APPLICATION SPEC 411-3280	SIZE A3	CAGE CODE 00779
4 PLC ± -	ANGLES ± -	WEIGHT -	DRAWING NO C-1634009	RESTRICTED TO -
MATERIAL SEE TABLE	FINISH SEE TABLE	CUSTOMER DRAWING	SCALE NTS	SHEET 1 OF 1 REV C