

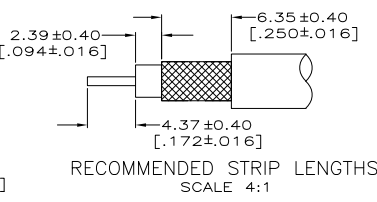
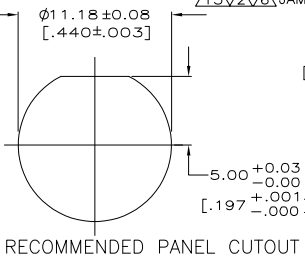
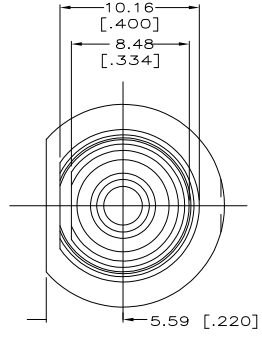
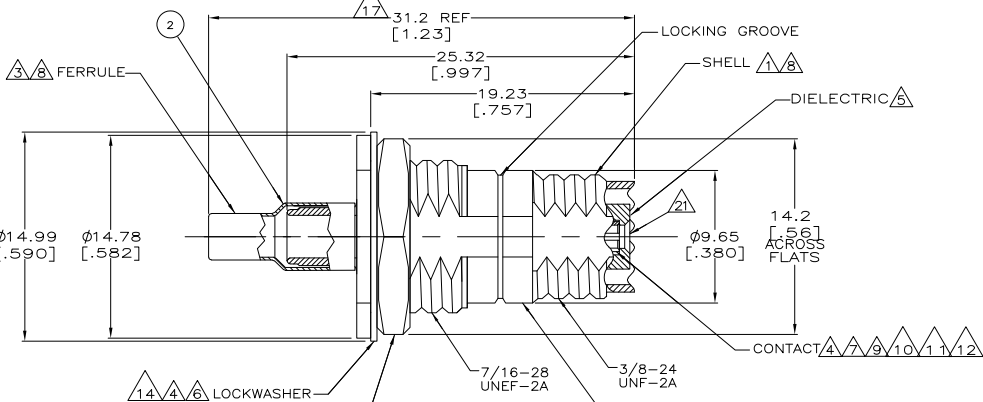
4 3 2 1

THIS DRAWING IS UNPUBLISHED. RELEASED FOR PUBLICATION
© COPYRIGHT BY TYCO ELECTRONICS CORPORATION. ALL RIGHTS RESERVED.

LOC		REVISIONS		
NO	DESCRIPTION	DATE	BY	APPD
00				
K	OBSOLETED: -3 PER ECR 05-008388	23DEC2008	DLJ	LLV

- ① ZINC DIE CAST PER ASTM-B-86.
- ② BRASS PER QQ-B-626.
- ③ BRASS PER ASTM-B-36.
- ④ PHOSPHOR BRONZE PER QQ-B-750.
- ⑤ POLYMETHYLPENTENE GENERAL PURPOSE.
- ⑥ NICKEL PLATE PER QQ-N-290, 2.54µm [.000100] MIN THICK.
- ⑦ TIN PLATE PER MIL-T-10727B; TYPE 2. 2.54µm [.000100] MIN THICK.
- ⑧ TIN PLATE PER ASTM-B-545, 2.54µm [.000100] MIN THICK.
- ⑨ STAMPED & FORMED CONTACT, P/N 415030-2, ORDERED SEPARATELY.
- ⑩ STAMPED & FORMED CONTACT, P/N 415030-3, ORDERED SEPARATELY.
- ⑪ CRIMP TOOLING: AMP-O-LECTRIC 565435-5 WITH APPLICATOR 466689-2. (PAD LTR A)
- ⑫ CRIMP TOOLING: AMP-O-LECTRIC 565435-5 WITH APPLICATOR 567386-2.
- ⑬ JAMNUT ORDERED SEPARATELY, P/N 228575-2.
- ⑭ LOCKWASHER ORDERED SEPARATELY, P/N 980506-1.

- ⑮ FERRULE CRIMP TOOLING: POWER UNIT 189721-1 (HAND ACTUATED) OR 189722-1 (FOOT ACTUATED). TOOL HOLDER 356302-1 (RATCHETED) OR 189767-1 (NON-RATCHETED). ADAPTOR 679304-1 WITH DIE SET 220189-1.
- ⑯ FERRULE CRIMP TOOLING: POWER UNIT 189721-1 (HAND ACTUATED) OR 189722-1 (FOOT ACTUATED). TOOL HOLDER 356302-1 (RATCHETED) OR 189767-1 (NON-RATCHETED). ADAPTOR 679304-1 WITH DIE SET 318450-2.
- ⑰ DIMENSION APPLIES AFTER CONNECTOR IS CRIMPED TO CABLE.
- ⑱ FERRULE CRIMP TOOLING: POWER UNIT 189721-1 (HAND ACTUATED) OR 189722-1 (FOOT ACTUATED). TOOL HOLDER 356302-1 (RATCHETED) OR 189767-1 (NON-RATCHETED). ADAPTOR 679304-1 WITH DIE SET 58651-1.
- ⑲ CRIMP TOOLING: AMP-O-LECTRIC 565435-5 WITH ADAPTOR 466689-2. (PAD LTR B)
- ⑳ CRIMP TOOLING: AMP-O-LECTRIC 565435-5 WITH ADAPTOR 466689-2. (PAD LTR C)
- ㉑ PART ACCEPTABLE WITH UP TO 2 SERRATED TEETH MISSING. VOID CREATED BY MISSING TEETH CANNOT EXTEND MORE THAN 1.01[.040] FROM THE TIP OF ADJACENT SERRATED TEETH.
- ㉒ OBSOLETED PART.



CABLE	FERRULE QTY=1	JACK ASSY QTY=1	PART NUMBER
⑮ 21-AWG-SOLID	⑱ 887079-3	⑲ 415140-1	⑳ 415012-3
⑯ 22-AWG-STRANDED	⑲ 9-328666-0	⑲ 415140-2	⑳ 415012-2
⑰ RG-174/U	⑲ 9-221132-0	⑲ 415140-1	⑳ 415012-1
⑱ RG-58/U			

THIS DRAWING IS A CONTROLLED DOCUMENT.

DESIGNED BY: J. MARTINELLI	DATE: 14OCT93	BY: [Signature]	TYCO ELECTRONICS
DRAWN BY: B. MOYER	DATE: 26OCT93	BY: [Signature]	TYCO ELECTRONICS
APPROVED BY: B. MOYER	DATE: 27OCT94		
PRODUCT SPEC: APPLICATION SPEC: —	SIZE: A2	CAGE CODE: 00779	DRAWING NO: 415012
WEIGHT: —	SCALE: 5:1	SHEET: 1	REV: K
CUSTOMER DRAWING			

AMP 1471-9 REV 31MAR2000