

4

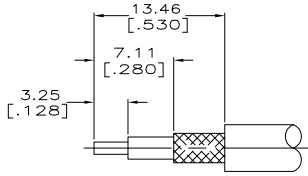
3

2

1

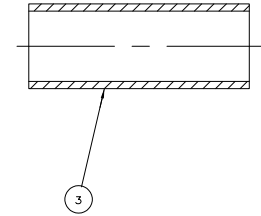
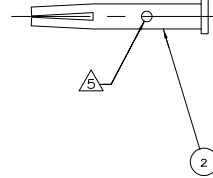
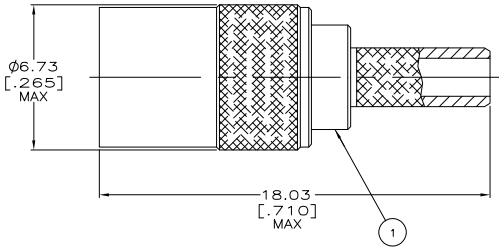
THIS DRAWING IS UNPUBLISHED. RELEASED FOR PUBLICATION
 © COPYRIGHT 2005 BY TYCO ELECTRONICS CORPORATION. ALL RIGHTS RESERVED.

LOC	DIST	REVISIONS				
		F	LTR	DATE	BY	APP'D
AJ	16	N2	REVISED PER EDD 06-018711	30AUG2006	MC	JH



RECOMMENDED STRIP LENGTHS
SCALE NTS

- △ FINISHES:
BODY: NICKEL PLATE PER QQ-N-290
CONTACT: GOLD PLATE PER MIL-G-45204
OUTER CONTACT: GOLD PLATE PER MIL-G-45204
- △ FINISHES:
BODY: NICKEL PLATE PER QQ-N-290
CONTACT: GOLD PLATE PER MIL-G-45204
OUTER CONTACT: NICKEL PLATE PER QQ-N-290
- 3. INTERFACE PER MIL-C-39012
- 4. SEE I.S. SHEET 408-2987-12.
- △ SIGHT HOLE ON PART NUMBER 1-414946-0 ONLY.
- △ SEE DRAWINGS 414946-1 AND 1-414946-2 FOR INFORMATION SPECIFIC TO THESE PART NUMBERS.



△	B	58483-1	.12B	HX4-1637	4	K699	△	RG-179	2-446556-1	228278-4	414958-1	1-414946-2
	C	58483-1	.151	HX4-1637	4	K699	△	HP 8120-0552-1	1-413889-4	415630-4	414958-1	1-414946-1
	B	58483-1	.12B	HX4-1637	4	K699	△	RG-179	1-413889-3	228278-4	414958-2	414946-9
	B	58483-1	.12B	HX4-1637	4	K699	△	RG-179	1-413889-3	228278-4	414958-1	414946-8
	B	58483-1	.12B	HX4-1637	4	K699	△	RG-179	1-413889-3	228278-4	414958-1	414946-7
	B	58483-1	.12B	HX4-1637	4	K699	△	RG-179	1-413889-3	228278-4	414958-2	414946-6
	B	58483-1	.12B	HX4-1637	4	K699	△	RG-179	1-413889-3	228278-4	414958-1	414946-5
	C	58483-1	.151	HX4-1637	4	K699	△	RD-316	1-413889-4	228203-4	414958-2	414946-4
	C	58483-1	.151	HX4-1637	4	K699	△	RD-316	1-413889-4	228203-4	414958-1	414946-3
	B	58483-1	.12B	HX4-1637	4	K699	△	RG-316 & RG-174	1-413889-3	228203-4	414958-2	414946-2
												414946-1

POSITION LETTER	AMP DIE SET	HEX SIZE	DANIELS DIE SET	SELECTOR NUMBER	DANIELS POSITIONER
	AMP PRO-CRIMPER FOR BRAID CRIMP	M 22520/5-01 FOR BRAID CRIMP		M 22520/2-01 FOR CONTACT CRIMP	

TOOLING INFORMATION

NOTES	CABLE	FERRULE QTY=1	CONTACT QTY=1	PLUG ASSY QTY=1	PART NO
		③	②	①	

THIS DRAWING IS A CONTROLLED DOCUMENT.

DIMENSIONS: mm [INCHES]	DESIGNED BY: J. McLEOD	DATE: 190204	50 OHM PLUG ASSY,STR SMB
0 P.L.C. ± .005	CHECKED BY: J. McLEOD	DATE: 190204	
1 P.L.C. ± .005	APPROVED BY: J. McLEOD	DATE: 190204	
2 P.L.C. ± .010			
3 P.L.C. ± .015			
4 P.L.C. ± .020			
ANGLES: ± .5°			
FINISH: △			

TYCO Electronics Tyco Electronics Corporation Harrisburg, PA 17105-3608

SIZE: A2 CASE CODE: 00779 DRAWING NO: 414946

CUSTOMER DRAWING SCALE: 8:1 SHEET: 1 of 1 REV: N2