

4

3

2

1

THIS DRAWING IS UNPUBLISHED. RELEASED FOR PUBLICATION JAN. 2004.
 © COPYRIGHT 2004 BY TYCO ELECTRONICS CORPORATION. ALL RIGHTS RESERVED.

LOC	DIST	REVISIONS		DATE	BY	APP'D
E	B	F	LR			
		B	EDR-07-030734	21DEC07	JMS	FWK

NOTES:

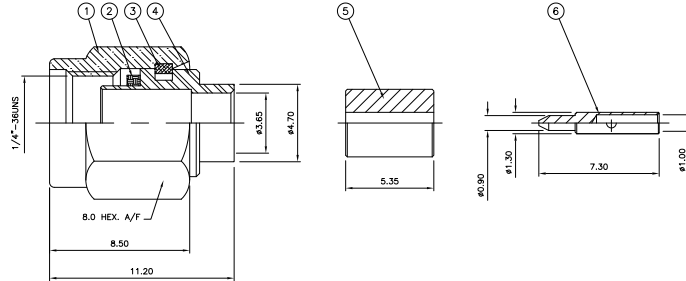
- ▲ SINGLE PACK IN ACCORDANCE WITH SPEC 107-3275
- ▲ 100 BULK PACK IN ACCORDANCE WITH SPEC 107-3275
- ▲ 0.08µm GOLD PLATING
- ▲ 0.75µm GOLD PLATING
- ▲ PASSIVATED (GOLD PLATED CABLE ENTRY)

- 6 ELECTRICAL CHARACTERISTICS
- FREQUENCY RANGE:
 BRASS BODY: DC - 6.0GHz
 STAINLESS STEEL (PASSIVATED): DC - 18.0GHz
 STAINLESS STEEL (GOLD): DC - 18.0GHz
- NOMINAL IMPEDANCE: 50 Ohm
 INSULATION RESISTANCE: 5000 MOhm
 WORKING VOLTAGE: 500 Volts RMS at Sea Level
 DIELECTRIC WITHSTAND VOLTAGE: 1500 Volts RMS Max
 CONTACT RESISTANCE: 3 mOhm Max
 CENTRE CONTACT: 2 mOhm Max
 OUTER CONTACT: 1.35:1
 VSWR @ 4GHz: 0.06 Max
 INSERTION LOSS dB @ x 1.5 GHz:

- 7 MECHANICAL CHARACTERISTICS
- COUPLING NUT RETENTION FORCE: 267N
 CABLE RETENTION FORCE: 110N Min
 CLAMP NUT RECOMMENDED TORQUE: 90-110N
 DURABILITY: 500 Cycles Min

- 8 ENVIRONMENTAL CHARACTERISTICS
- OPERATING TEMPERATURE: -65 to +165 DegC

- 9 FOR TECHNICAL DATA REFER TO YOUR LOCAL TYCO ELECTRONICS SALES OFFICE
- 10 ALL DIMENSIONS ARE NOMINAL FOR REFERENCE ONLY UNLESS OTHERWISE STATED



QTY	QTY PER ASSY	PARTS LIST	DESCRIPTION	ITEM				
1	1	1	1	1	BRASS	▲ CENTER CONTACT	6	
1	1	1	1	1	PTFE	▲ INSULATOR	5	
1	1	-	-	-	BRASS	▲ BODY	4	
-	-	1	-	-	STAINLESS STEEL	▲ BODY	4	
-	-	-	1	1	STAINLESS STEEL	▲ BODY	4	
1	1	1	1	1	STAINLESS STEEL	▲ CIRCLIP	3	
1	1	1	1	1	SILICON	▲ GASKET	2	
1	1	-	-	-	BRASS	▲ SHELL	1	
-	-	1	-	-	STAINLESS STEEL	▲ SHELL	1	
-	-	-	1	1	STAINLESS STEEL	▲ SHELL	1	
3-1	3-0	2-1	2-0	1-1	1-0	MATERIAL	DESCRIPTION	ITEM

THIS DRAWING IS A CONTROLLED DOCUMENT.

DRW: R. SMITH	26MAY04	TYCO ELECTRONICS	Tyco Electronics Corporation
CHK: S. PARLOW	26MAY04		Bideford, UK, EX39 4HE
APP'D: F. WHEELER-KING			
PRODUCT SPEC:			
APPLICATION SPEC:		SIZE: A2	CAGE CODE: 00779
HEIGHT:		DRAWING NO:	1478903
MATERIAL: SEE TABLE		FINISH:	
		CUSTOMER DRAWING	SCALE: NTS
			SHEET: 1 of 2
			REV: B

4

3

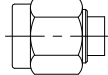
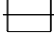
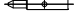
2

1

THIS DRAWING IS UNPUBLISHED. RELEASED FOR PUBLICATION JAN. 2004.
 © COPYRIGHT 2004 BY TYCO ELECTRONICS CORPORATION. ALL RIGHTS RESERVED.

LOC	DIST	REVISIONS	DATE	BY	APPD
E	B				
F	LW	DESCRIPTION			
		SEE SHEET 1			

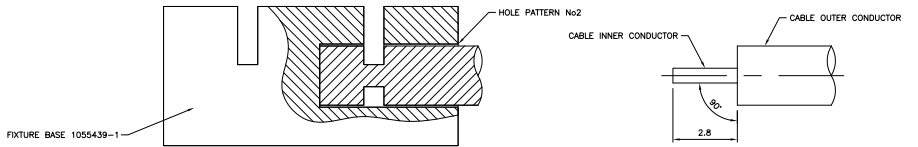
COMPONENTS

MAIN BODY (ITEM 1,2,3,4)	DIELECTRIC (ITEM 5)	CENTRE CONTACT (ITEM 6)			
					

ASSEMBLY INSTRUCTIONS RG402/U

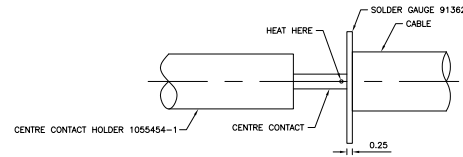
STEP 1: PREPARATION OF CABLE

1. INSERT SQUARED CABLE END INTO FIXTURE BASE HOLE PATTERN No. 2
2. PLACE SAW IN SAW SLOT AND CUT THROUGH OUTER CONDUCTOR AND INTO DIELECTRIC WHILST ROTATING CABLE
3. REMOVE CABLE FROM FIXTURE AND FINISH CUTTING DIELECTRIC WITH CUTTING BLADE
4. BARE INNER CONDUCTOR BY PRYING CUT OUTER CONDUCTOR AND DIELECTRIC FROM CABLE
5. TRIM CABLE INNER CONDUCTOR TO LENGTH



STEP 2: SOLDERING OF CENTRE CONTACT TO CABLE

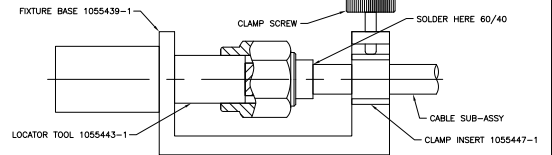
1. TIN INNER CONDUCTOR OF CABLE
2. PLACE SOLDER GAUGE ON INNER CONDUCTOR FLUSH WITH END OF OUTER CONTACT
3. PLACE CENTRE CONTACT IN HOLDER. HEAT CENTRE CONTACT AND PUSH IT OVER INNER CONDUCTOR OF CABLE TO REST FIRMLY AGAIN SOLDER GAUGE
4. REMOVE SOLDER GAUGE AND EXCESS SOLDER



STEP 3: SOLDERING OF CABLE TO HOUSING

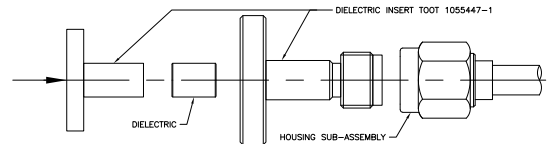
1. SCREW HOUSING ASSEMBLY ONTO LOCATOR TOOL
2. CAREFULLY INSERT CABLE ASSEMBLY INTO PRE-ASSEMBLED HOUSING DIELECTRIC OF HOUSING ASSEMBLY
3. PLACE LOOSE ASSEMBLY IN FIXTURE BASE AS SHOWN
4. BOTTOM LOCATOR TOOL AGAIN FIXTURE BASE AS SHOWN
5. MAINTAINING PRESSURE ON CABLE TO KEEP LOCATOR TOOL BOTTOMED TIGHTEN CLAMP SCREW TO SECURE CABLE
6. SOLDER CABLE TO HOUSING

NOTE: FIXTURE SHOULD BE CLAMPED VERTICALLY IN VICE (SO THAT CONNECTOR INTERFACE IS FACING DOWN)



STEP 4: PRESSING OF DIELECTRIC INTO HOUSING SUB-ASSEMBLY

1. THREAD INSERT TOOL INTO HOUSING SUB-ASSEMBLY
2. INSERT DIELECTRIC INTO INSERT TOOL HOUSING
3. PLACE INSERT TOOL PLUNGER INTO POSITION AND PRESS UNTIL FLANGE BOTTOMS ON TOOL HOUSING
4. ASSEMBLY IS NOW COMPLETE



NOTES: INTERFACE DIMENSIONS PER MIL-STD-384A-310-1

THIS DRAWING IS A CONTROLLED DOCUMENT.		DRN R. SMITH 25MAY04	Tyco Electronics Corporation Bideford, UK, EX39 4HE	
DIMENSIONS: mm		CHK S. PARLOW 25MAY04	NAME SMA STRAIGHT PLUG DIRECT SOLDER NON CAPTIVE CENTRE CONTACT RG402/U	
TOLERANCES UNLESS OTHERWISE SPECIFIED		APPD F. WHEELER-KING 25MAY04	SIZE A2	CAGE CODE 00779
MATERIAL SEE TABLE		APPLICATION SPEC —	DRAWING NO 1478903	RESTRICTED TO —
FINISH —		HEIGHT —	SCALE NTS	SHEET 2 of 2
		CUSTOMER DRAWING		REV B

AMP 1471-9 REV 31MAR2000

1478903

A

D

C

B

A

D

C

B

A

D

C

B

A

D

C

B

A

D

C

B

A

D

C

B

A

D

C

B

A

D

C

B

A

D

C

B

A

D

C

B

A

D

C

B

A

D

C

B

A

D

C

B

A

D

C

B

A

D

C

B

A

D

C

B

A

D

C

B

A

D

C

B

A

D

C

B

A

D

C

B

A

D

C

B

A

D

C

B

A

D

C

B

A

D

C

B

A

D

C

B

A

D

C

B

A

D

C

B

A

D

C

B

A

D

C

B

A

D

C

B

A

D

C

B

A

D

C

B

A

D

C

B

A

D

C

B

A

D

C

B

A

D

C

B

A

D

C

B

A

D

C

B

A

D

C

B

A

D

C

B

A

D

C

B

A

D

C

B

A

D

C

B

A

D

C

B

A

D

C

B

A

D

C

B

A

D

C

B

A

D

C

B

A

D

C

B

A

D

C

B

A

D

C

B

A

D

C

B

A

D

C

B

A

D

C

B

A

D

C

B

A

D

C

B

A

D

C

B

A

D

C

B

A

D

C

B

A

D

C

B

A

D

C

B

A

D

C

B

A

D

C

B

A

D

C

B

A

D

C

B

A

D

C

B

A

D

C

B

A

D

C

B

A

D

C

B

A

D

C

B

A

D