

4

3

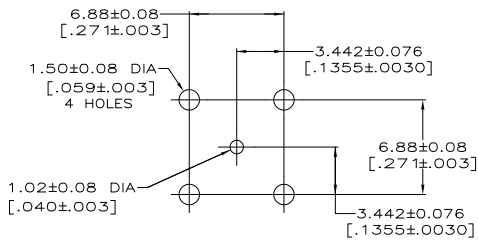
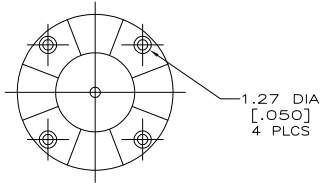
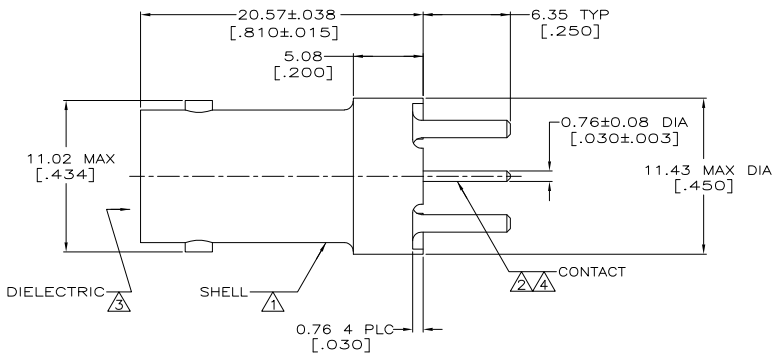
2

1

THIS DRAWING IS UNPUBLISHED. RELEASED FOR PUBLICATION
 © COPYRIGHT BY TYCO ELECTRONICS CORPORATION. ALL RIGHTS RESERVED.

LOC	DIST	REVISIONS			
P	LTR	DESCRIPTION	DATE	MIN	APPD
AJ	16	01 REVISED PER ECO-06-017423	21JUL2006	KS	JL

- 1 ZINC PER QQ-Z-363
- 2 BERYLLIUM COPPER PER ASTM B 196
- 3 PTFE PER MIL-P-19468
- 4 GOLD PL PER MIL-G-45204, 0.76µm [.000030] MIN THK
- 5 BRIGHT TIN PL PER ASTM B 545, 3.04µm [.000120] MIN THK
- 6 SEE INSTRUCTION SHEET 408-9889
- 7 MATTE TIN PL PER ASTM B 545, 3.04µm [.000120] MIN THK



PCB CONFIGURATION

1	6274359-2
2	6274359-1
SHELL FINISH	PART NUMBER

THIS DRAWING IS A CONTROLLED DOCUMENT.		DWG: J. VABELA - 02FEB2005 OK: DOCK J. HAVENER - 02FEB2005 J. LIPPERT PRODUCT SPEC: 108-12078 APPLICATION SPEC: - WEIGHT: - FINISH: - CUSTOMER DRAWING	 Tyco Electronics Corporation Harrisburg, PA 17105-3608 JACK, VERTICAL, PCB, 75 Ohm, COMMERCIAL BNC SIZE: A2 CASE CODE: 00779 DRAWING NO: C-6274359 RESTRICTED TO: - SCALE: 5:1 SHEET: 1 OF 1 REV: 01
--	--	--	--

AMP 1471-9 REV 31MM2000

21JUL2006 10:20am us026463 \\Us194fp00\data\RF\Prod_eng\Schrum\Lippert\ECO-06-017423\6274359_1-c.dwg

6274359

A