

4

3

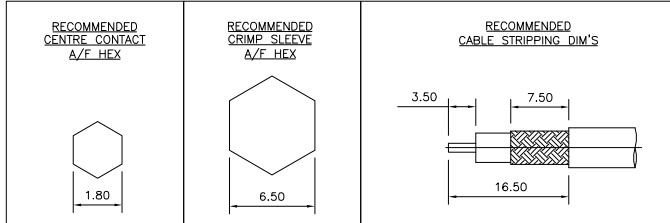
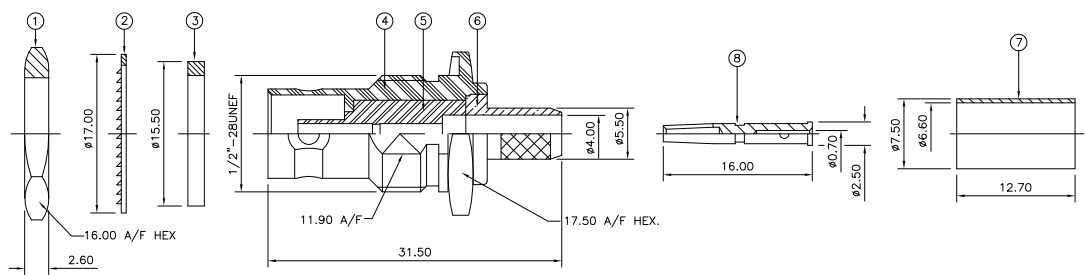
2

1

THIS DRAWING IS UNPUBLISHED. RELEASED FOR PUBLICATION NOV. 2005.
 COPYRIGHT 2005 BY TYCO ELECTRONICS CORPORATION. ALL RIGHTS RESERVED.

LOC		DIST		REVISIONS			
P	LTR	DESCRIPTION		DATE	DWN	APVD	
	C	ECR-05-016219		23NOV05	JMS	FWK	

- NOTES:**
- 1. PACK IN ACCORDANCE WITH AMP SPEC 107-3275
 - 2. 100 TRAY PACK IN ACCORDANCE WITH AMP SPEC 107-3275
 - 3. Au PLATING
 - 4. Ni PLATING
 - 5. THIS ITEM MUST BE WHITE
 - 6. HAND TOOL : 9-1478240-0
 - 7. DIE SET : 9-1478242-0
 - 8. **ELECTRICAL CHARACTERISTICS**
 - FREQUENCY RANGE: DC - 2 GHz
 - NOMINAL IMPEDANCE: 75 Ohm
 - INSULATION RESISTANCE: 5000 MOhm
 - WORKING VOLTAGE: 500 Volts RMS at Sea Level
 - DIELECTRIC WITHSTAND VOLTAGE: 1500 Volts RMS Max
 - CONTACT RESISTANCE: 1.50 mOhm Max
 - CENTRE CONTACT: 0.20 mOhm Max
 - OUTER CONTACT: 1.20:1 Max
 - VSWR @ 2GHz: 0.20 Max
 - INSERTION LOSS dB @ x 2 GHz: 0.20 Max
 - 9. **MECHANICAL CHARACTERISTICS**
 - COUPLING RETENTION FORCE: N/A
 - CABLE RETENTION FORCE: 170N Min
 - MOUNT NUT RECOMMENDED TORQUE: 4N
 - DURABILITY: 500 Cycles Min
 - 10. **ENVIRONMENTAL CHARACTERISTICS**
 - OPERATING TEMPERATURE: -65 to +165 DegC



QUANTITY PER ASSY		PARTS LIST		
1	1	BRASS	CONTACT	8
1	1	BRASS	FERRULE	7
1	1	BRASS	CHASSIS	6
1	1	PTFE	INSULATION	5
1	1	BRASS	BODY	4
1	1	SILICON RUBBER	GASKET	3
1	1	STEEL	LOCKWASHER	2
1	1	BRASS	HEX NUT	1
6--0	1--0	MATERIAL	DESCRIPTION	ITEM

THIS DRAWING IS A CONTROLLED DOCUMENT.

DIMENSIONS:	TOLERANCES UNLESS OTHERWISE SPECIFIED:	DWN	J. SANDWELL	23NOV05	Tyco Electronics Corporation Bideford EX39 4HE
mm		CHK	S. PARLOW	23NOV05	
		APVD	F. WHEELER-KING	23NOV05	
		PRODUCT SPEC	108-3435		
		APPLICATION SPEC	411-3247		NAME BNC BULKHEAD JACK REAR MOUNT CRIMP 75 OHM RG59B/U, 62A/U, 140/U, 210/U, URM90, KX6A, KX25, KX52, KX53
MATERIAL	FINISH	WEIGHT	SIZE CAGE CODE DRAWING NO		RESTRICTED TO
SEE TABLE	-	-	A3 00779 C-1337435		-
CUSTOMER DRAWING			SCALE	SHEET	REV
			NTS	1 OF 1	C

AMP 1470-19 REV 31MAR2000