

4

3

2

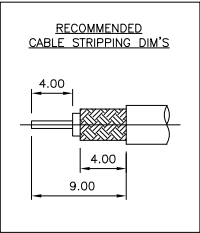
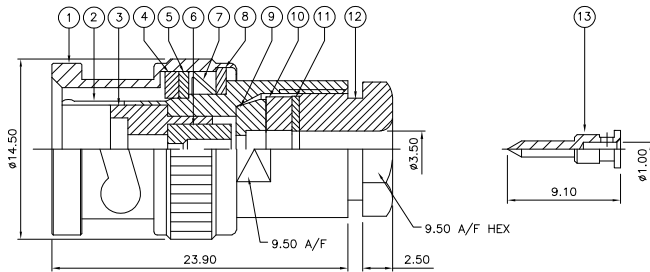
1

THIS DRAWING IS UNPUBLISHED. RELEASED FOR PUBLICATION JULY, 2006.
 © COPYRIGHT 2006 BY TYCO ELECTRONICS CORPORATION. ALL RIGHTS RESERVED.

LOC	DIST	REVISIONS			
P	LTR	DESCRIPTION	DATE	DWN	APVD
E	B	B	ECR-06-017552	20JUL06	JMS FWK

NOTES:

- 1 PACK IN ACCORDANCE WITH AMP SPEC 107-3275
- 2 100 TRAY PACK IN ACCORDANCE WITH AMP SPEC 107-3275
- 3 Ag PLATING
- 4 Ni PLATING
- 5 THIS ITEM MUST BE WHITE
- 6 ELECTRICAL CHARACTERISTICS
 - FREQUENCY RANGE: DC - 2 GHz
 - NOMINAL IMPEDANCE: 75 Ohm
 - INSULATION RESISTANCE: 5000 MOhm
 - WORKING VOLTAGE: 500 Volts RMS at Sea Level
 - DIELECTRIC WITHSTAND VOLTAGE: 1500 Volts RMS Max
 - CONTACT RESISTANCE:
 - CENTRE CONTACT: 1.50 mOhm Max
 - OUTER CONTACT: 0.20 mOhm Max
 - VSWR @ 2GHz: 1.20:1 Max
 - INSERTION LOSS dB @ x 2 GHz: 0.20 Max
- 7 MECHANICAL CHARACTERISTICS
 - COUPLING RETENTION FORCE: 445N Min
 - CABLE RETENTION FORCE: 85N Min
 - CLAMP NUT RECOMMENDED TORQUE: 4N
 - DURABILITY: 500 Cycles Min
- 8 ENVIRONMENTAL CHARACTERISTICS
 - OPERATING TEMPERATURE: -65 to +165 DegC
- 9 FOR TECHNICAL DATA REFER TO YOUR LOCAL TYCO ELECTRONICS SALES OFFICE
- 10 ALL DIMENSIONS ARE NOMINAL FOR REFERENCE ONLY UNLESS OTHERWISE STATED



QTY	QTY PER ASSY	MATERIAL	DESCRIPTION	ITEM
1	1	BRASS	CONTACT	13
1	1	BRASS	CLAMP NUT	12
1	1	BRASS	WASHER	11
1	1	SILICONE RUBBER	GASKET	10
1	1	BRASS	SLEEVE	9
1	1	BRASS	WASHER	8
1	1	SPRING STEEL	SPRING	7
1	1	PTFE	INSULATION	6
1	1	BRASS	RETAINING RING	5
1	1	SILICONE RUBBER	GASKET	4
1	1	PTFE	INSULATION	3
1	1	BRASS	BODY	2
1	1	BRASS	SHELL	1

THIS DRAWING IS A CONTROLLED DOCUMENT.

DIMENSIONS: mm	TOLERANCES UNLESS OTHERWISE SPECIFIED:	DWN J. SANDWELL 20JUL06	Tyco Electronics Corporation Bideford EX39 4HE
		CHK S. PARLOW 20JUL06	
		APVD E. WHEELER-KING 20JUL06	
		PRODUCT SPEC	
MATERIAL	FINISH	APPLICATION SPEC	NAME
SEE TABLE	-	411-3253	BNC STRAIGHT PLUG SOLDER 75 OHM RG179B/U, 187A/U, URM111
		WEIGHT	SIZE CAGE CODE DRAWING NO
			A3 00779 C-1478152
		CUSTOMER DRAWING	RESTRICTED TO
			-
		SCALE NTS	SHEET 1 OF 1 REV B