

4

3

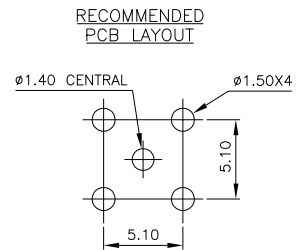
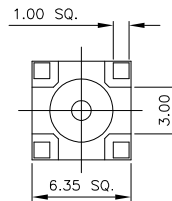
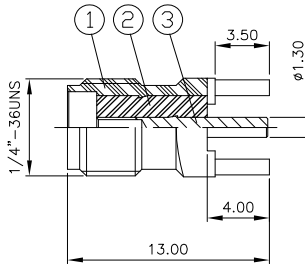
2

1

THIS DRAWING IS UNPUBLISHED. RELEASED FOR PUBLICATION APRIL, 2004.
 © COPYRIGHT 2004 BY TYCO ELECTRONICS CORPORATION. ALL RIGHTS RESERVED.

LOC	DIST	REVISIONS			
P	LTR	DESCRIPTION	DATE	DWN	APVD
E	B	A	EBD0-0035-03	10FEB04	RS FWK

- NOTES:
- 1 SINGLE PACK IN ACCORDANCE WITH SPEC 107-3275
 - 2 100 TRAY PACK IN ACCORDANCE WITH SPEC 107-3275
 - 3 0.08µm Au PLATING OVER 1.27µm Ni PLATING
 - 4 0.08µm Au PLATING OVER 1.27µm Ni PLATING OVER 0.76µm Cu PLATING
 - 5 0.76µm Au PLATING OVER 1.27µm Ni PLATING OVER 0.76µm Cu PLATING
 - 6 FOR TECHNICAL DATA REFER TO YOUR LOCAL TYCO ELECTRONICS SALES OFFICE
 - 7 ALL DIMENSIONS ARE NOMINAL FOR REFERENCE ONLY UNLESS OTHERWISE STATED



QTY	PLC	TRAY	TRAY	TRAY	TRAY	MATERIAL	DESCRIPTION	ITEM
1	1	1	1	1	1	BERYLLIUM COPPER	CENTER CONTACT	3
1	1	1	1	1	1	PTFE	INSULATOR	2
1	1	-	-	-	-	BRASS	BODY	1
-	-	1	1	-	-	STAINLESS STEEL	BODY	1
3	1	3	0	1	0			

THIS DRAWING IS A CONTROLLED DOCUMENT.

DIMENSIONS: mm	TOLERANCES UNLESS OTHERWISE SPECIFIED:	DWN R. SMITH 10FEB04	Tyco Electronics Corporation	
0 PLC ± -	1 PLC ± -	CHK S. PARLOW 10FEB04	Bideford, UK, EX39 4HE	
2 PLC ± -	3 PLC ± -	APVD E. WHEELER-KING 10FEB04	NAME	
4 PLC ± -	ANGLES ± -	PRODUCT SPEC 108-3461	SMA STRAIGHT PCB SOCKET RECEPTACLE	
MATERIAL SEE TABLE	FINISH	APPLICATION SPEC	SIZE A3	CAGE CODE 00779
		WEIGHT	DRAWING NO C-1478979	RESTRICTED TO
		CUSTOMER DRAWING	SCALE 1:1	SHEET 1 OF 1 REV A