

4

3

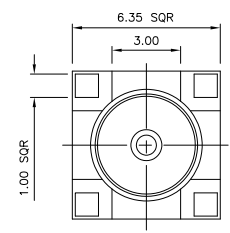
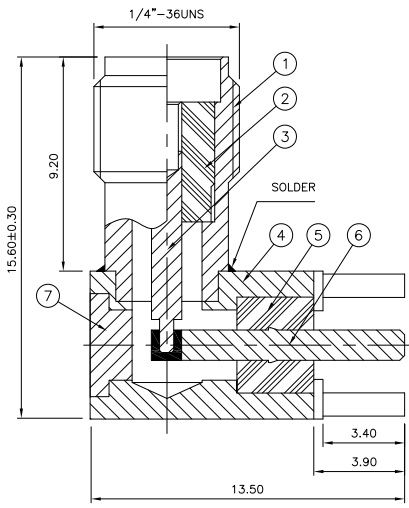
2

1

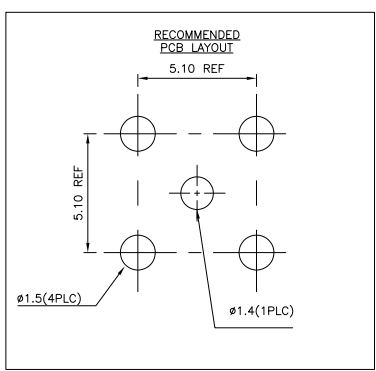
THIS DRAWING IS UNPUBLISHED. RELEASED FOR PUBLICATION DEC. 2003.  
 © COPYRIGHT 2003 BY TYCO ELECTRONICS CORPORATION. ALL RIGHTS RESERVED.

LOC	DIST	REVISIONS			
P	LTR	DESCRIPTION	DATE	OWN	APVD
C		ECR-08-017114	08JUL08	JMS	FWK

- NOTES:**
- 1. SINGLE PACK IN ACCORDANCE WITH SPEC 107-3275
  - 2. 30 BULK PACK IN ACCORDANCE WITH SPEC 107-3275
  - 3. 0.08µm GOLD PLATING
  - 4. 0.76µm GOLD PLATING
  - 5. **ELECTRICAL CHARACTERISTICS**  
 FREQUENCY RANGE:  
 STAINLESS STEEL: DC-12.4GHz  
 BRASS: DC-6GHz  
 NOMINAL IMPEDANCE: 50 OHMS  
 INSULATION RESISTANCE: 5000 MOHMS  
 DIELECTRIC WITHSTAND VOLTAGE: 500V RMS  
 CONTACT RESISTANCE:  
 CENTRE CONTACT: 3 mOHMS  
 OUTER CONTACT: 2 mOHMS
  - 6. **MECHANICAL CHARACTERISTICS**  
 DURABILITY: 500 CYCLES  
 TORQUE SETTING: 0.15-0.20 NM
  - 7. FOR TECHNICAL DATA REFER TO YOUR LOCAL TYCO ELECTRONICS SALES OFFICE
  - 8. ALL DIMENSIONS ARE NOMINAL FOR REFERENCE ONLY UNLESS OTHERWISE STATED



QTY	PER ASSY	MATERIAL	DESCRIPTION	ITEM									
1	1	BRASS	ACCESS CAP	7									
-	-	1	1	STAINLESS STEEL	ACCESS CAP	7							
-	-	1	1	BRASS	PIN	6							
1	-	-	-	BRASS	PIN	6							
1	-	-	-	DELTRIN	INSULATOR	5							
-	1	1	1	PTFE	INSULATOR	5							
1	1	-	-	BRASS	BODY	4							
-	-	1	1	1	STAINLESS STEEL	BODY	4						
-	1	1	1	1	BERYLLIUM COPPER	SOCKET	3						
1	-	-	-	PHOSPHER BRONZE	SOCKET	3							
1	-	-	-	DELTRIN	INSULATOR	2							
-	1	1	1	PTFE	INSULATOR	2							
1	1	-	-	BRASS	BODY	1							
-	-	1	1	1	STAINLESS STEEL	BODY	1						
3	-	1	3	-	0	1	-	1	-	0	MATERIAL	DESCRIPTION	ITEM



THIS DRAWING IS A CONTROLLED DOCUMENT.

DIMENSIONS: mm	TOLERANCES UNLESS OTHERWISE SPECIFIED: 0 PLC ± - 1 PLC ± - 2 PLC ± - 3 PLC ± - 4 PLC ± - ANGLES ± -	OWN: J. SANDWELL 09DEC03 CHK: S. PARLOW 09DEC03 APVD: F. WHEELER-KING 09DEC03	Tyco Electronics Tyco Electronics Corporation Bideford, UK, EX39 4HE
MATERIAL: SEE TABLE	FINISH: -	NAME: SMA RIGHT ANGLE PCB SOCKET RECEPTACLE	RESTRICTED TO: -
CUSTOMER DRAWING		SIZE: A3 CAGE CODE: 00779 DRAWING NO: 1478978	SCALE: NTS SHEET: 1 of 1 REV: C