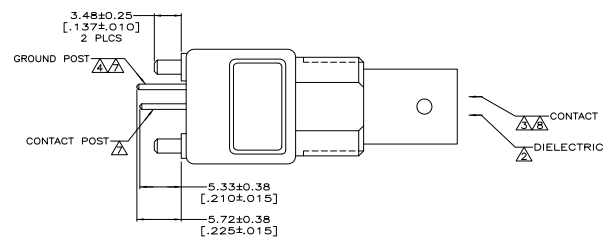
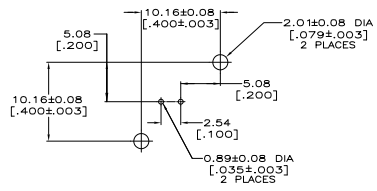
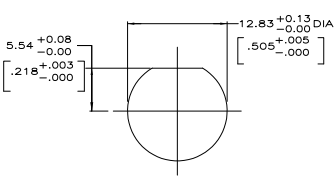
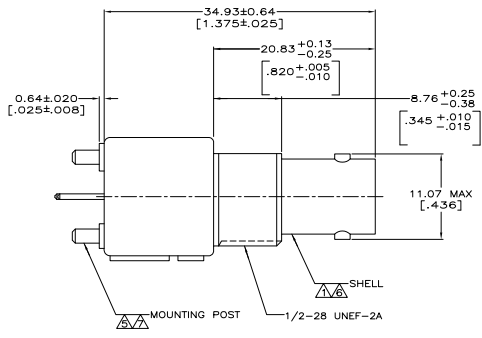
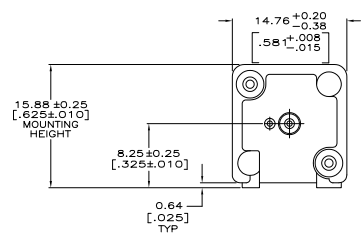


REV	DATE	DESCRIPTION	BY	CHK	APP
16					
D		PER EC 0514-0184-04			



- △ ZINC PER QQ-Z-363.
 - △ POLYMETHYLPENTENE PER ASTM-D-1238.
 - △ PHOSPHOR BRONZE PER QQ-B-750.
 - △ BRASS PER ASTM-B-453.
 - △ BRASS PER ASTM-B-16.
 - △ NICKEL PLATE PER QQ-N-290,
3.81 μm [.000150] MINIMUM THICK.
 - △ TIN PLATE PER ASTM-B-545,
3.81 μm [.000150] MINIMUM THICK.
 - △ GOLD PLATE PER MIL-G-45204,
0.76 μm [.000030] MINIMUM THICK.
9. SEE INSTRUCTION SHEET 2769.



227673-1
PART NUMBER

THIS DRAWING IS A CONTROLLED DOCUMENT.		REV	DATE	DESCRIPTION	BY	CHK	APP
DRAWING		16					
REVISEMENTS		D		PER EC 0514-0184-04			
DRAWING		SEE NOTES 1-5	SEE NOTES 6-8	CUSTOMER DRAWING	DATE	REV	BY
DRAWING		A1	00779	Q=227673	DATE	REV	BY