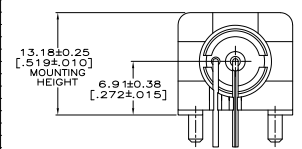
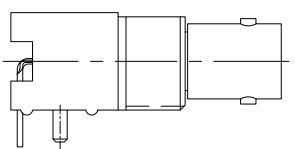


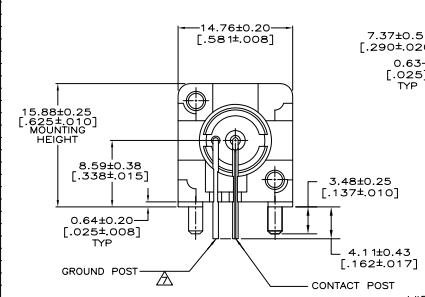
REV	DATE	DESCRIPTION	BY	CHK	APP
AF	7/21/2008	REVISED PER ECO 08-008474	DW	JL	
AF1	11JAN10	REV PER ECO-09-021826	KK	AEG	



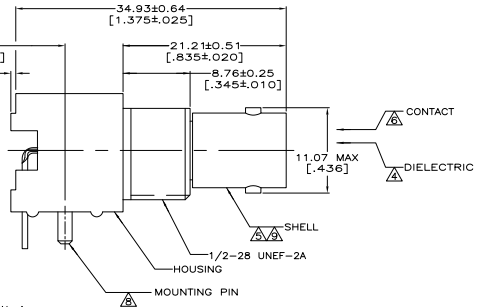
VIEW C  
 (SAME AS VIEW A  
 EXCEPT AS SHOWN)



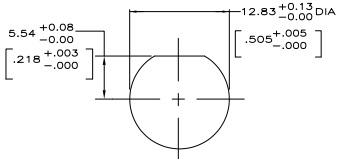
PCB CONFIGURATION



VIEW A

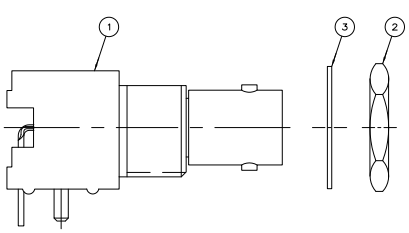


VIEW B



RECOMMENDED PANEL CUTOUT

- ▲ POLYESTER PBT PER MIL-M-24519, TYPE GPT-15F, UL94V-0 RATED, COLOR:WHITE
  - ▲ POLYESTER PBT PER MIL-M-24519, TYPE GPT-15F, UL94V-0 RATED, COLOR:BLACK
  - ▲ POLYESTER PCT GENERAL PURPOSE, 30% GLASS FILLED, UL94V-0 RATED, COLOR:GRAY
  - ▲ POLYMETHYLENE, GENERAL PURPOSE.
  - ▲ ZINC PER QQ-Z-363.
  - ▲ PHOSPHOR BRONZE PER QQ-B-750.
  - ▲ BRASS PER ASTM-B-453.
  - ▲ BRASS PER ASTM-B-16.
  - ▲ NICKEL PLATE PER QQ-N-290, 3.81 μm [0.00150] MINIMUM THICK.
  - ▲ TIN PLATE PER ASTM-B-545, 3.81 μm [0.00150] MINIMUM THICK.
  - ▲ GOLD PLATE PER MIL-G-45204, 2.54 μm [0.00100] MINIMUM THICK.
  - ▲ GOLD PLATE PER MIL-G-45204, 0.76 μm [0.00030] MINIMUM THICK.
  - ▲ SILVER PLATE PER QQ-S-365, 2.54 μm [0.00100] MINIMUM THICK.
  - ▲ TIN PLATE PER ASTM-B-545, 3.81 μm [0.00150] MINIMUM THICK.
15. SEE INSTRUCTION SHEET 2769.
- ▲ OBSOLETE PARTS: OBSOLETE CIS STREAMLINING PER D.RENAUD/D.SINISI



REV	DATE	DESCRIPTION	BY	CHK	APP	REV	DATE	DESCRIPTION	BY	CHK	APP	REV	DATE	DESCRIPTION	BY	CHK	APP	
▲		SUPERSEDED BY 5227161-2	▲	▲	▲	▲						▲						9-227161-1
▲		SUPERSEDED BY 5227161-1	▲	▲	▲	▲						▲						9-227161-0
▲		SUPERSEDED BY 1-5227161-7	▲	▲	▲	▲						▲						1-227161-7
▲		SUPERSEDED BY 1-5227161-6	▲	▲	▲	▲						▲						1-227161-6
▲		[OBSOLETE]	▲	▲	▲	▲						▲						1-227161-4
▲		SUPSD BY 415218-5 OR 415218-6	▲	▲	▲	▲						▲						1-227161-3
▲		SUPERSEDED BY 227161-7	▲	▲	▲	▲						▲						1-227161-2
▲		SUPERSEDED BY 227161-7	▲	▲	▲	▲						▲						1-227161-1
▲		[OBSOLETE]	▲	▲	▲	▲						▲						1-227161-0
▲		SUPERSEDED BY 227161-7	▲	▲	▲	▲						▲						227161-9
▲			▲	▲	▲	▲						▲						227161-8
▲			▲	▲	▲	▲						▲						227161-7
▲			▲	▲	▲	▲						▲						227161-6
▲		SUPERSEDED BY 227161-3	▲	▲	▲	▲						▲						227161-5
▲		SUPERSEDED BY 227161-6	▲	▲	▲	▲						▲						227161-4
▲			▲	▲	▲	▲						▲						227161-3
▲			▲	▲	▲	▲						▲						227161-2
▲			▲	▲	▲	▲						▲						227161-1

MOUNTING PIN PLATING	GROUND POST PLATING	CONTACT POST PLATING	CONTACT FINISH	HOUSING MATERIAL	VIEW	LOCKWASHER	JAM NUT	ASSEMBLY	PART NUMBER
▲	▲	▲	▲	▲	3	2	1	1	

THIS DRAWING IS A CONTROLLED DOCUMENT

REVISIONS:

REV	DATE	DESCRIPTION	BY	CHK	APP
1	108-12078				

DATE: 108-12078

SIZE: 4.1

CUSTOMER DRAWING: A100779

DATE: 11/10/08

REV: 1

APP: AF1

THIS DRAWING IS A CONTROLLED DOCUMENT

DATE: 11/10/08

REV: 1

APP: AF1