

4

3

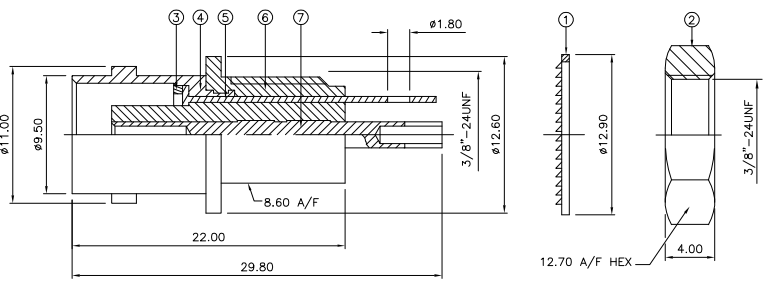
2

1

THIS DRAWING IS UNPUBLISHED. RELEASED FOR PUBLICATION DEC. 2005.
 © COPYRIGHT 2005 BY TYCO ELECTRONICS CORPORATION. ALL RIGHTS RESERVED.

LOC	DIST	REVISIONS			
P	LTR	DESCRIPTION	DATE	DWN	APVD
C		ECR-05-017969	13DEC05	JMS	FWK

- NOTES:
- ▲ PACK IN ACCORDANCE WITH AMP SPEC 107-3275
 - ▲ 100 TRAY PACK IN ACCORDANCE WITH AMP SPEC 107-3275
 - ▲ Au PLATING
 - ▲ Ni PLATING
- 5 ELECTRICAL CHARACTERISTICS
- | | |
|-------------------------------|----------------------------|
| FREQUENCY RANGE: | DC - 4 GHz |
| NOMINAL IMPEDANCE: | 50 Ohm |
| INSULATION RESISTANCE: | 5000 MOhm |
| WORKING VOLTAGE: | 500 Volts RMS at Sea Level |
| DIELECTRIC WITHSTAND VOLTAGE: | 1500 Volts RMS Max |
| CONTACT RESISTANCE: | |
| CENTRE CONTACT: | 1.50 mOhm Max |
| OUTER CONTACT: | 0.20 mOhm Max |
| VSWR @ xGHz: | N/A |
| INSERTION LOSS xdb: | N/A |
- 6 MECHANICAL CHARACTERISTICS
- | | |
|-------------------------------|----------------|
| COUPLING RETENTION FORCE: | N/A |
| CABLE RETENTION FORCE: | N/A |
| MOUNT NUT RECOMMENDED TORQUE: | 2N |
| DURABILITY: | 500 Cycles Min |
- 7 ENVIRONMENTAL CHARACTERISTICS
- | | |
|------------------------|-----------------|
| OPERATING TEMPERATURE: | -65 to +85 DegC |
|------------------------|-----------------|



QTY	PER ASSY	MATERIAL	DESCRIPTION	ITEM
1	1	BRASS	CONTACT	7
1	1	ABS	BODY A	6
1	1	BRASS	WASHER	5
1	1	BRASS	BODY B	4
1	1	BRASS	WASHER	3
1	1	BRASS	HEX NUT	2
1	1	STEEL	LOCKWASHER	1
6--0	1--0	MATERIAL	DESCRIPTION	ITEM

THIS DRAWING IS A CONTROLLED DOCUMENT.

DIMENSIONS: mm	TOLERANCES UNLESS OTHERWISE SPECIFIED:	DWN J. SANDWELL 13DEC05	Tyco Electronics Corporation Bideford EX39 4HE
0 PLC ± .05	1 PLC ± .02	CHK S. PARLOW 13DEC05	
2 PLC ± .01	3 PLC ± .01	APVD F. WHEELER-KING 13DEC05	NAME BNC INSULATED BULKHEAD SOCKET FRONT MOUNT 50 OHM
4 PLC ± .01	ANGLES ± .01	PRODUCT SPEC	SIZE CAGE CODE DRAWING NO RESTRICTED TO
MATERIAL SEE TABLE	FINISH	APPLICATION SPEC	A3 00779 C=1337452
		WEIGHT	CUSTOMER DRAWING SCALE NTS SHEET 1 OF 1 REV C