

4

3

2

1

THIS DRAWING IS UNPUBLISHED. RELEASED FOR PUBLICATION SEPT ,2005.

COPYRIGHT 2005 BY TYCO ELECTRONICS CORPORATION. ALL RIGHTS RESERVED.

LOC		DIST		REVISIONS			
P	LTR	DESCRIPTION		DATE	DWN	APVD	
D		ECR-06-015875		29JUN06	JMS	FWK	

NOTES:

- ⚠ PACK IN ACCORDANCE WITH AMP SPEC 107-3275
- ⚠ 100 TRAY PACK IN ACCORDANCE WITH AMP SPEC 107-3275
- ⚠ Au PLATING

4 ELECTRICAL CHARACTERISTICS

FREQUENCY RANGE: DC - 4 GHz
NOMINAL IMPEDANCE: 50 Ohm
INSULATION RESISTANCE: 1000 MOhm
WORKING VOLTAGE: 250 Volts RMS at Sea Level
DIELECTRIC WITHSTAND VOLTAGE: 750 Volts RMS Max
CONTACT RESISTANCE: 6.00 mOhm Max
CENTRE CONTACT: 1.00 mOhm Max
OUTER CONTACT:

5 MECHANICAL CHARACTERISTICS

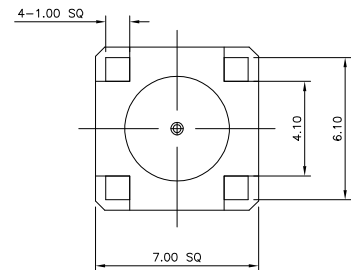
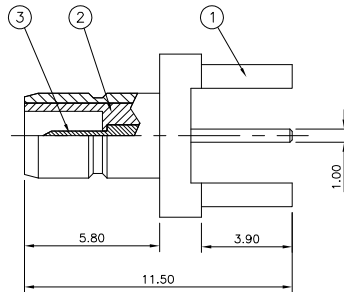
DURABILITY: 500 Cycles Min

6 ENVIRONMENTAL CHARACTERISTICS

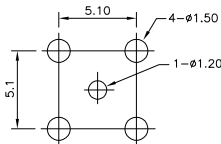
OPERATING TEMPERATURE: -65 to +165 DegC

7 FOR TECHNICAL DATA REFER TO YOUR LOCAL
TYCO ELECTRONICS SALES OFFICE

8 ALL DIMENSIONS ARE NOMINAL FOR REFERENCE
ONLY UNLESS OTHERWISE STATED



RECOMMENDED PCB LAYOUT



THIS DRAWING IS A CONTROLLED DOCUMENT.

DIMENSIONS:		TOLERANCES UNLESS OTHERWISE SPECIFIED:	
mm			
0 PLC	±	-	
1 PLC	±	-	
2 PLC	±	-	
3 PLC	±	-	
4 PLC	±	-	
ANGLES	±	-	
MATERIAL		FINISH	
SEE TABLE		-	

DWN J.SANDWELL 07SEPT05

CHK S.PARLOW 07SEPT05

APVD F.WHEELER-KING 07SEPT05

PRODUCT SPEC

APPLICATION SPEC

WEIGHT

CUSTOMER DRAWING

	1	1	BRASS	⚠	CONTACT	3
	1	1	PTFE		INSULATION	2
	1	1	BRASS	⚠	BODY	1
	6--0	1--0	MATERIAL		DESCRIPTION	ITEM

QUANTITY PER ASSY		PARTS LIST	
-------------------	--	------------	--

NAME		Tyco Electronics Corporation	
		Bideford, UK, EX39 4HE	
SMB STRAIGHT PCB SOCKET		50 OHM	
SIZE		CAGE CODE	
A3		00779	
DRAWING NO		1337482	
RESTRICTED TO		-	
SCALE		NTS	
SHEET		1 OF 1	
REV		D	

AMP 1470-19 REV 31MAR2000