

4

3

2

1

THIS DRAWING IS UNPUBLISHED. RELEASED FOR PUBLICATION SEPT. 2005.  
 © COPYRIGHT 2005 BY TYCO ELECTRONICS CORPORATION. ALL RIGHTS RESERVED.

LOC	DIST	REVISIONS			
P	LTR	DESCRIPTION	DATE	DWN	APVD
E	B	ECR-10-005886	18/3/2010	RITA	BOB

## NOTES:

1. SINGLE PACK IN ACCORDANCE WITH AMP SPEC 107-3275  
 2. 100 TRAY PACK IN ACCORDANCE WITH AMP SPEC 107-3275  
 3. FLASH Au PLATING  
 4. 0.8µm Au PLATING  
 5. Ni PLATING  
 6. THIS ITEM MUST BE WHITE

7. HAND TOOL : 9-1478240-0  
 8. DIE SET : 9-1478242-0

## 9. ELECTRICAL CHARACTERISTICS

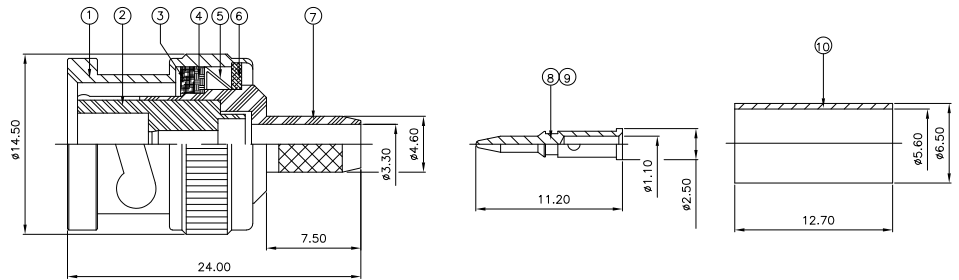
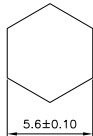
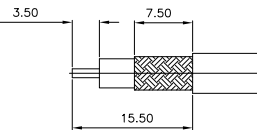
FREQUENCY RANGE: DC - 4 GHz  
 NOMINAL IMPEDANCE: 50 Ohm  
 INSULATION RESISTANCE: 5000 MOhm  
 WORKING VOLTAGE: 500 Volts RMS at Sea Level  
 DIELECTRIC WITHSTAND VOLTAGE: 1500 Volts RMS Max  
 CONTACT RESISTANCE:  
 CENTRE CONTACT: 1.50 mOhm Max  
 OUTER CONTACT: 0.20 mOhm Max  
 VSWR @ 4GHz: 1.30:1 Max  
 INSERTION LOSS dB @ x 3 GHz: 0.20 Max

## 10. MECHANICAL CHARACTERISTICS

COUPLING NUT RETENTION FORCE: 445N Min  
 CABLE RETENTION FORCE: 170N Min  
 DURABILITY: 500 Cycles Min

## 11. ENVIRONMENTAL CHARACTERISTICS

OPERATING TEMPERATURE: -65 to +165 DegC

RECOMMENDED  
CENTRE CONTACT  
A/F HEXRECOMMENDED  
CRIMP SLEEVE  
A/F HEXRECOMMENDED  
CABLE STRIPPING DIM'S

QTY	PLC	PLC	PLC	PLC	MATERIAL	DESCRIPTION	ITEM
1	1	1	1	1	BRASS	FERRULE	10
1	1	-	-	-	BRASS	CONTACT	9
-	-	1	1	1	BRASS	CONTACT	8
1	1	1	1	1	BRASS	BODY	7
1	1	1	1	1	BRASS	WASHER	6
1	1	1	1	1	SPRING STEEL	SPRING	5
1	1	1	1	1	BRASS	WASHER	4
1	1	1	1	1	SILICON RUBBER	GASKET	3
1	1	1	1	1	PTFE	INSULATION	2
1	1	1	1	1	BRASS	SHELL	1
6--1	1--1	6--0	1--0		MATERIAL	DESCRIPTION	ITEM

THIS DRAWING IS A CONTROLLED DOCUMENT.

DIMENSIONS:	TOLERANCES UNLESS OTHERWISE SPECIFIED:
mm	
0 PLC	± .05
1 PLC	± .02
2 PLC	± .01
3 PLC	± .005
4 PLC	± .002
ANGLES	± .05
MATERIAL	FINISH
SEE TABLE	SEE TABLE

DWN	J. SANDWELL	12SEPT05
CHK	S. PARLOW	12SEPT05
APVD	F. WHEELER-KING	12SEPT05
PRODUCT SPEC	108-3435	
APPLICATION SPEC	411-3247	
WEIGHT	-	
CUSTOMER DRAWING		

Tyco Electronics Corporation Bideford, UK, EX39 4HE		
NAME: BNC STRAIGHT PLUG CRIMP 50 OHM RG58C/U, 141A/U, URM 43 & 76, KX15 BELDEN 9907		
SIZE: A3	CAGE CODE: 00779	DRAWING NO: 1337426
RESTRICTED TO: -	SCALE: NTS	SHEET: 1 OF 1
REV: E1		