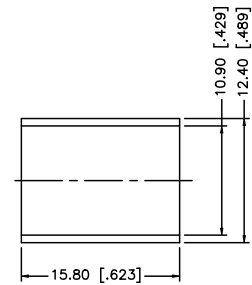
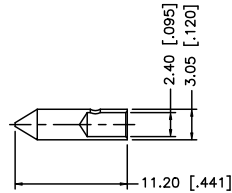
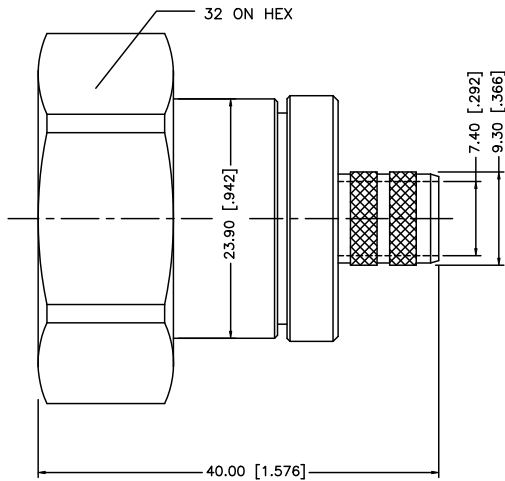
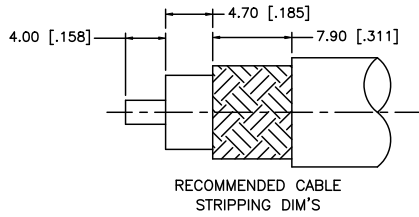


REV.	DATE	ECR NO.	DESCRIPTION
A	12/29/00	-	MODIFY PLATING TO SILVER
B	12/27/05	-	MODIFY PLATING TO NEXCOTE, UPDATE DRAWING FORMAT
C	07/27/08	-	REVISE MATING FACE TO 32 HEX NUT



NOTES:

1. CRIMPED FERRULE HEX CRIMP SIZE .429" [10.9]
2. CRIMPED CONTACT PIN HEX CRIMP SIZE .100" [2.54]

DESCRIPTION	MATERIAL	FINISH	QTY	UNLESS OTHERWISE SPECIFIED DIMENSIONS ARE IN MILLIMETERS. DIMENSIONS IN () ARE IN INCHES AND FOR CUSTOMER REFERENCE ONLY.	APPROVALS	DATE	<h1 style="color: blue;">Amphenol Connex</h1>
8							
7							
6				UNLESS OTHERWISE SPECIFIED TOLERANCES FOR MILLIMETERS ARE: 0.5 - 8mm ± 0.20mm 8 - 30mm ± 0.40mm 30 - 120mm ± 0.50mm	DRAWN	GRS	07/27/08
5	FERRULE	COPPER	NEXCOTE	1	CHECKED		PART DESCRIPTION
4	CONTACT PIN	BRASS	GOLD	1	ISSUED		
3	INSULATOR	PTFE	NATURAL	1	SHEET	1 OF 1	PART NO.
2	HOUSING	BRASS	NEXCOTE	1			272105
1	BODY	BRASS	NEXCOTE	1			DWG. NO.
				UNLESS OTHERWISE SPECIFIED TOLERANCES FOR INCHES ARE: .020 - .315 = ± 0.007" .315 - 1.180 = ± 0.015" 1.180 - 4.724 = ± 0.020"	CAD FILE	C:/272/272105.DWG	REV. C
				DO NOT SCALE DRAWING			SIZE A
							SCALE NA