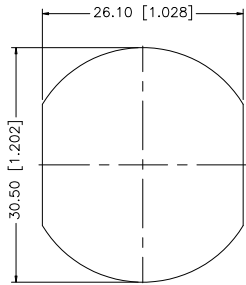
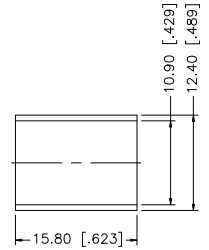
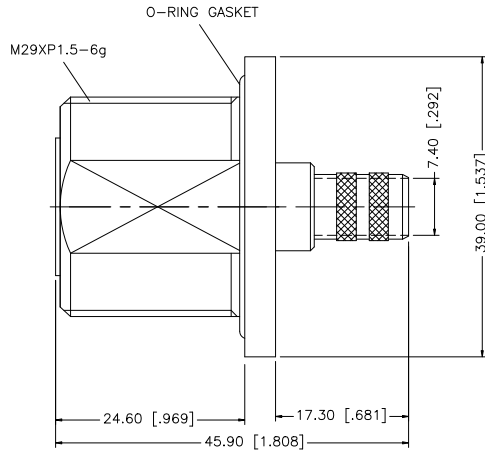
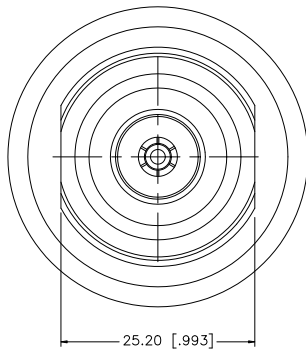
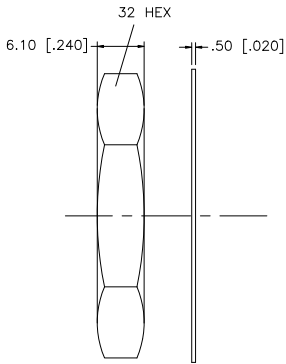
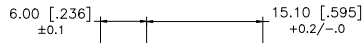


REV.	DATE	ECR NO.	DESCRIPTION
NC	06/18/08	100036	INITIAL RELEASE



RECOMMENDED MOUNTING HOLE DIMENSIONS



RECOMMENDED CABLE STRIPPING DIM'S

NOTE:

1. CRIMPED FERRULE HEX CRIMP SIZE .255" [6.48]
2. CRIMPED CONTACT PIN HEX CRIMP SIZE .068" [1.73] OR CONTACT PIN TO SOLDER

				APPROVALS	DATE	<b>Amphenol Connex</b>					
				DRAWN	GRS					06/18/08	
8				CHECKED			PART DESCRIPTION <b>7/16 BULKHEAD JACK LMR 400/B9913 DOUBLE 'D' FLATS</b>				
7	FERRULE	COPPER	NEXCOTE	1	ISSUED						
6	HEX NUT	BRASS	NEXCOTE	1	SHEET	1 OF 1	PART NO. <b>272155-10</b>				
5	LOCK WASHER	BRASS	NEXCOTE	1							
4	GASKET	SILICONE	RED	1			DWG. NO. 272155-10.DWG				
3	INNER CONDUCTOR	BRASS	SILVER	1							
2	INSULATOR	PTFE	NATURAL	1			REV. NC SIZE A SCALE NA				
1	BODY	BRASS	NEXCOTE	1							
DESCRIPTION MATERIAL FINISH QTY				CAD FILE		C:/272/272155-10.DWG					

UNLESS OTHERWISE SPECIFIED DIMENSIONS ARE IN MILLIMETERS. DIMENSIONS IN [ ] ARE IN INCHES AND FOR CUSTOMER REFERENCE ONLY.

UNLESS OTHERWISE SPECIFIED TOLERANCES FOR MILLIMETERS ARE:  
0.5 - 8mm ± 0.20mm  
8 - 30mm ± 0.40mm  
30 - 120mm ± 0.50mm

UNLESS OTHERWISE SPECIFIED TOLERANCES FOR INCHES ARE:  
.020 - .315 = ± 0.007"  
.315 - 1.180 = ± 0.015"  
1.180 - 4.724 = ± 0.020"

DO NOT SCALE DRAWING