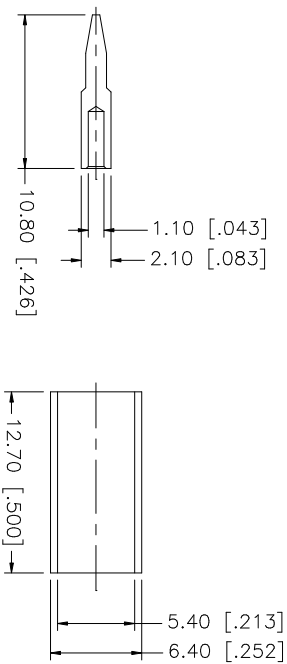
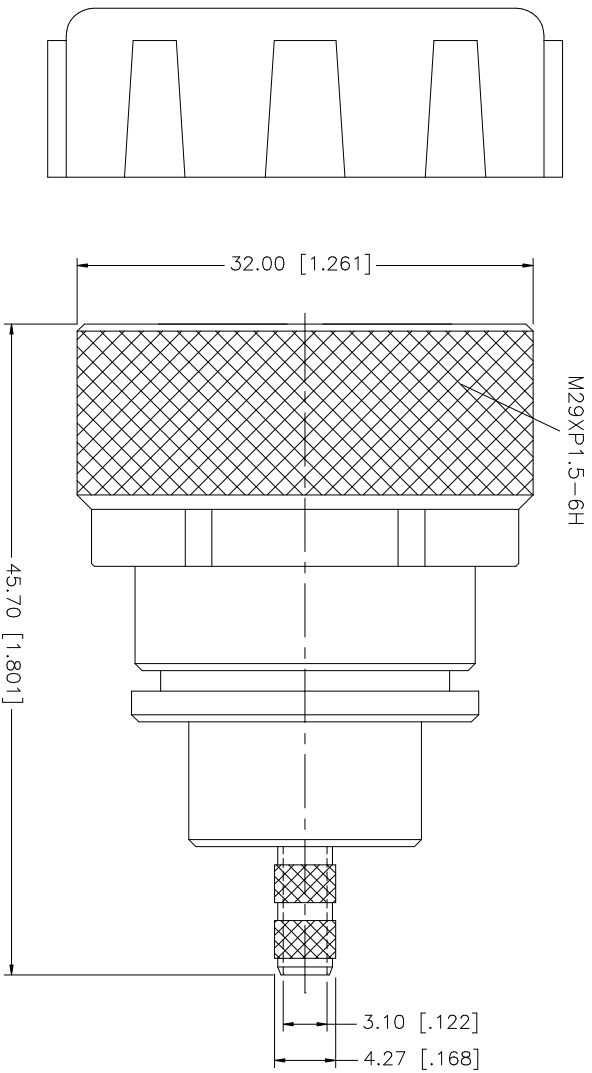
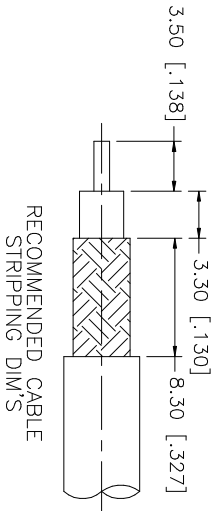


| REV. | DATE     | DESCRIPTION                                       |
|------|----------|---|
| A    | 12/29/00 | MODIFY PLATING TO SILVER                          |
| B    | 12/27/05 | MODIFY PLATING TO NEXCOTE / UPDATE DRAWING FORMAT |



NOTES:

1. CRIMPED FERRULE  
HEX CRIMP SIZE .213"
2. CRIMPED CONTACT PIN  
HEX CRIMP SIZE .068"  
OR CONTACT PIN TO SOLDER

| QTY | FINISH  | MATERIAL | DESCRIPTION |
|-----|---------|----------|-------------|
| 1   | NEXCOTE | BRASS    | BODY        |
| 1   | NEXCOTE | BRASS    | HOUSING     |
| 1   | NATURAL | TEFLON   | INSULATOR   |
| 1   | SILVER  | BRASS    | CONTACT PIN |
| 1   | NEXCOTE | COPPER   | FERRULE     |
| 1   | BLUE    | P.E.     | COVER       |

| APPROVALS | DATE     |
|-----------|----------|
| G.R.S.    | 12/27/05 |

| DO NOT SCALE DRAWING   | DO NOT SCALE DRAWING   | DO NOT SCALE DRAWING   |
|--|--|--|
| UNLESS OTHERWISE SPECIFIED DIMENSIONS ARE IN MILLIMETERS. DIMENSIONS IN [ ] ARE IN INCHES AND FOR CUSTOMER REFERENCE ONLY. TOLERANCES FOR MILLIMETERS ARE:<br>0.5 - 8mm ± 0.20mm<br>8 - 30mm ± 0.40mm<br>30 - 120mm ± 0.50mm | UNLESS OTHERWISE SPECIFIED DIMENSIONS ARE IN MILLIMETERS. DIMENSIONS IN [ ] ARE IN INCHES AND FOR CUSTOMER REFERENCE ONLY. TOLERANCES FOR MILLIMETERS ARE:<br>0.5 - 8mm ± 0.20mm<br>8 - 30mm ± 0.40mm<br>30 - 120mm ± 0.50mm | UNLESS OTHERWISE SPECIFIED DIMENSIONS ARE IN MILLIMETERS. DIMENSIONS IN [ ] ARE IN INCHES AND FOR CUSTOMER REFERENCE ONLY. TOLERANCES FOR MILLIMETERS ARE:<br>0.5 - 8mm ± 0.20mm<br>8 - 30mm ± 0.40mm<br>30 - 120mm ± 0.50mm |

| CDU FILE          | DWG. NO.   | REV. | SIZE | SCALE |
|-------------------|------------|------|------|-------|
| C:/272/272103.DWG | 272103.DWG | B    | A    | NA    |

| PART DESCRIPTION                              | PART NO. |
|---|----------|
| 7/16 CRIMP PLUG<br>(FOR RG-58/U, 58C/U CABLE) | 272103   |

**Amphenol Connex**