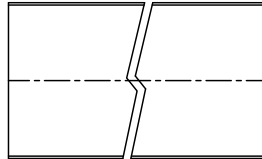
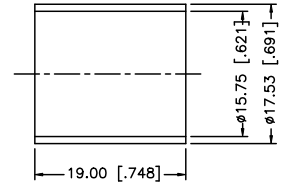
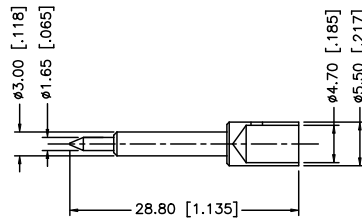
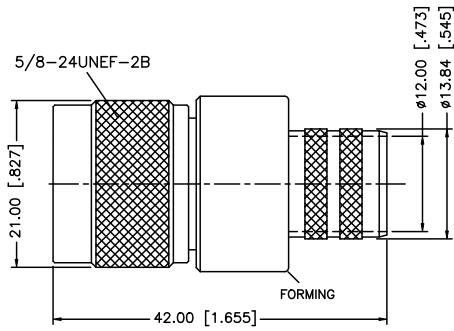
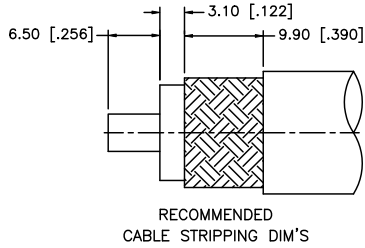


REV.	DATE	ECR NO.	DESCRIPTION
A	01/30/04	-	UPDATE DRAWING FORMAT
B	09/23/08	100043	REVISE HEX CRIMP DIMENSIONS (NOTES 1 AND 2)



HEAT SHRINK TUBE

NOTE:

1. CRIMPED FERRULE HEX CRIMP SIZE .610" [15.50]
2. CONTACT PIN TO SOLDER.

REV.	DATE	ECR NO.	DESCRIPTION
8			
7			
6			
5			
4			
3			
2			
1			

DESCRIPTION	MATERIAL	FINISH	QTY
HEAT SHRINK TUBE			1
FERRULE	COPPER	NEXCOTE	1
CONTACT PIN	BRASS	GOLD	1
INSULATOR	PTFE	NATURAL	1
BODY	BRASS	NEXCOTE	1

UNLESS OTHERWISE SPECIFIED DIMENSIONS ARE IN MILLIMETERS. DIMENSIONS IN [] ARE IN INCHES AND FOR CUSTOMER REFERENCE ONLY.	APPROVALS	DATE
UNLESS OTHERWISE SPECIFIED TOLERANCES FOR MILLIMETERS ARE: 0.5 - 8mm ± 0.20mm 8 - 30mm ± 0.40mm 30 - 120mm ± 0.50mm	DRAWN GRS	09/23/08
UNLESS OTHERWISE SPECIFIED TOLERANCES FOR INCHES ARE: .020 - .315 = ± 0.007" .315 - 1.180 = ± 0.015" 1.180 - 4.724 = ± 0.020"	CHECKED	
DO NOT SCALE DRAWING	ISSUED	
	SHEET 1 OF 1	
	CAD FILE C:/172/172206.DWG	

PART DESCRIPTION			
N CRIMP PLUG - LMR 600 CABLE			
PART NO.			
172206			
DWG. NO.	REV.	SIZE	SCALE
172206.DWG	B	A	NA

Amphenol Connex

N CRIMP PLUG - LMR 600 CABLE

172206

172206.DWG

REV. B

SIZE A

SCALE NA