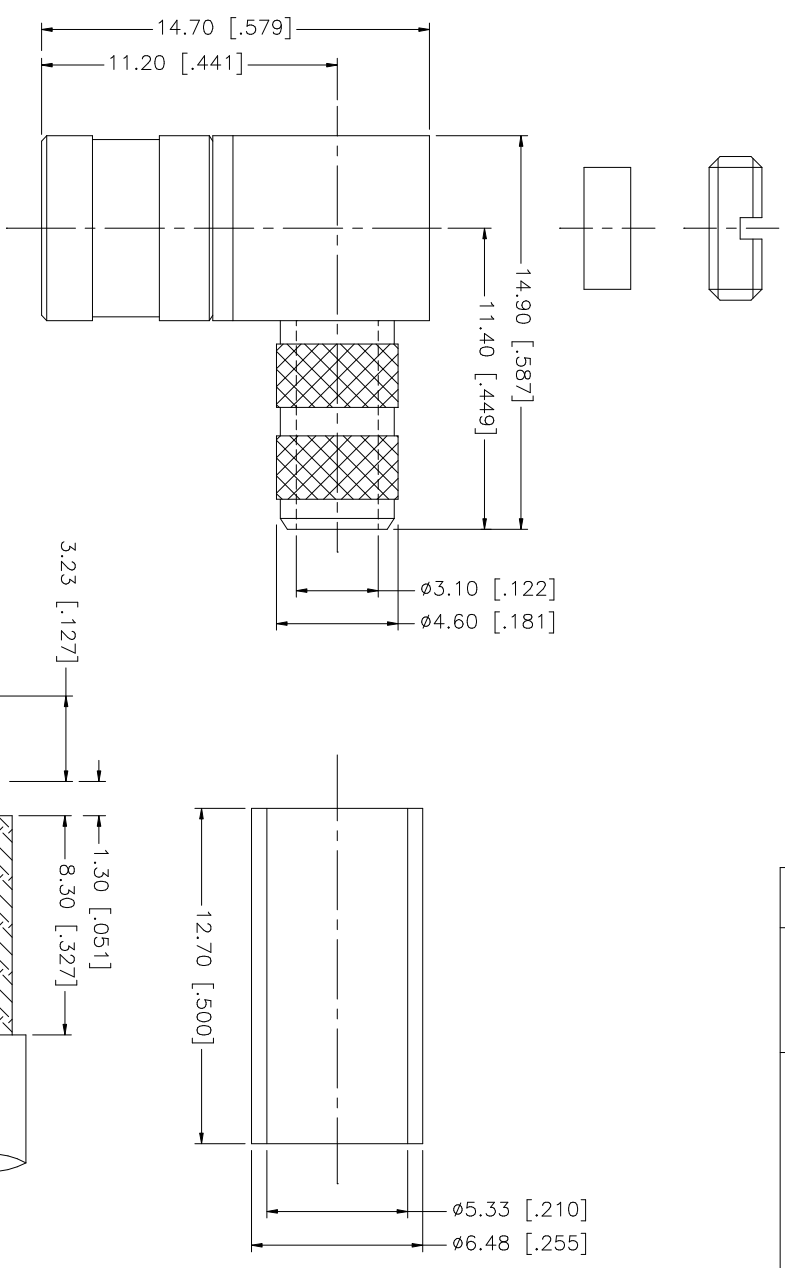


REV.	DATE	DESCRIPTION
NC	01/29/98	INITIAL RELEASE
A	07/20/05	UPDATE DRAWING FORMAT



UNLESS OTHERWISE SPECIFIED DIMENSIONS ARE INCHES AND FOR CUSTOMER REFERENCE ONLY.		APPROVALS	DATE	<p style="text-align: center; font-size: 2em; font-weight: bold; color: blue;">Amphenol Connex</p>	
8		DRAWN	G.R.S.		07/20/05
7		CHECKED			
6	FERRULE	ISSUED			
5	NUT	SMB R/A/ CRIMP PLUG (RG-58/U CABLE)			
4	INSULATOR	PART NO. 142206			
3	CONTACT PIN	PART NO. 142206			
2	INSULATOR	PART NO. 142206			
1	BODY	PART NO. 142206			
DESCRIPTION		MATERIAL	FINISH	QTY	

RECOMMENDED CABLE  
STRIPPING DIMENSIONS

**Amphenol Connex**

SMB R/A/ CRIMP PLUG  
(RG-58/U CABLE)

PART NO. 142206

UNLESS OTHERWISE SPECIFIED DIMENSIONS ARE INCHES AND FOR CUSTOMER REFERENCE ONLY.  
TOLERANCES FOR MILLIMETERS ARE:  
0.5 - 8mm ± 0.20mm  
8 - 30mm ± 0.40mm  
30 - 120mm ± 0.50mm

UNLESS OTHERWISE SPECIFIED DIMENSIONS FOR INCHES ARE:  
.020 - .315 = ± 0.007"  
.315 - 1.180 = ± 0.015"  
1.180 - 4.724 = ± 0.020"

DO NOT SCALE DRAWING

CAD FILE C:/142/142206.DWG

DWG. NO. 142206.DWG

REV. A

SIZE A

SCALE NA