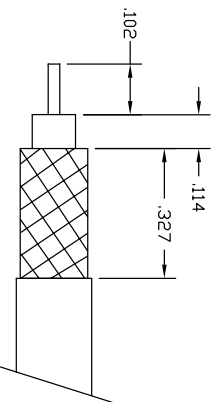


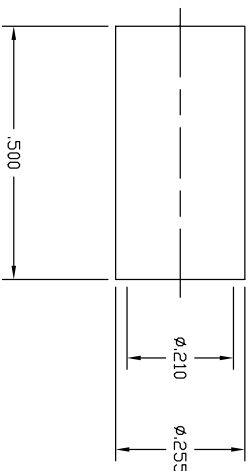
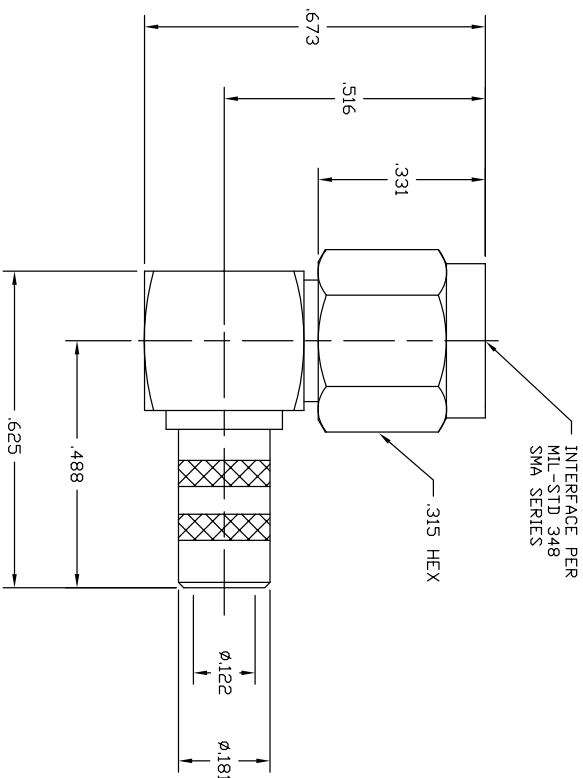
NOTES:

- DO NOT SCALE THIS DRAWING.
- MATERIALS OF CONSTRUCTION:
SHELL, HOUSING W/BARREL COVER = BRASS (ASTM-B16 H02, C36000), GOLD PLATED (.000003 MIN)
CONTACT PIN = BRASS (ASTM-B16 H02, C36000), GOLD PLATED (.000050 MIN)
INSULATOR - PIPE, ASTM D 1710 OR EQUIV.
GASKET - SILICONE RUBBER, COLOR RED.
CRIMP FERRULE - COPPER ALLOY, GOLD PLATED (.000003MIN)
RETAINER RING = BeCu (90-C-530), NATURAL
- PERFORMANCE REQUIREMENTS:
ELECTRICAL:
FREQUENCY RANGE - DC TO 12.4 GHZ
VSWR - 1.350:1 MAX
DIVV - 1000 VRMS

MECHANICAL:
CENTER CONTACT RETENTION - 4 LBS MIN



CABLE STRIPPING DIM'S



CUSTOMER OUTLINE DRAWING
ALL OTHER SHEETS ARE FOR INTERNAL USE ONLY

901-9873	DRAWING NO.
THIRD ANGLE PROJ.	

REVISIONS

REV	DESCRIPTION	DATE	ECO	APPR
A	OFFICIAL ENG. RELEASE TO MFG.	4/4/95	40350	PE/RAV
B	REDRAWN ON AUTO-CAD; ALL NOTES REWRITTEN & UPDATED	8/28/96	41519	CPM/
C	SEE SHEET 1	9/6/02	44186	CPM/

UNLESS OTHERWISE SPECIFIED, DIMENSIONS ARE IN INCHES AND TOLERANCES ARE:
 2 PLACE DECIMAL ±.015 (0.381 mm)
 3 PLACE DECIMAL ±.005 (0.127 mm)
 ANGLES ± 1°

NOTICE - These drawings, specifications, or other data (1) are, and remain the property of Amphenol Corp. (2) must be returned upon request, and (3) when they are given by Amphenol Corp., or to any other person to anyone for any purpose is not to be regarded by implication or otherwise in any manner licensing, granting rights or permitting such holder or any other person to manufacture, use or sell any product, process or design, patented or otherwise, that may in any way be related to or disclosed by said drawings, specifications, or other data.

MATERIAL	DRAWN	DATE	TITLE
REFERENCE EAR 111-964413 EAR 966278-0	P. BRENZEL ENGINEER RAV APPROVED B. GLEISSNER CAD FILE H:\PETE\5MA\901\ASSY\9873000C	12/8/94 DATE 3/31/95 DATE 8/23/96	SMA PLUG RIGHT ANGLE CRIMP TYPE FDR RG-58/U

CODE ID	DWG SIZE	DRAWING NO.	Amphenol
74868	B	901-9873	Amphenol Corporation RF/Microwave Operations Danbury, Conn. U.S.A. 06810
SCALE: 4:1	SHEET 2	OF 2	REV C