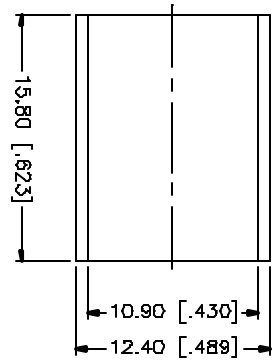
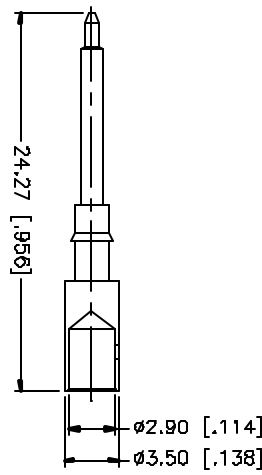
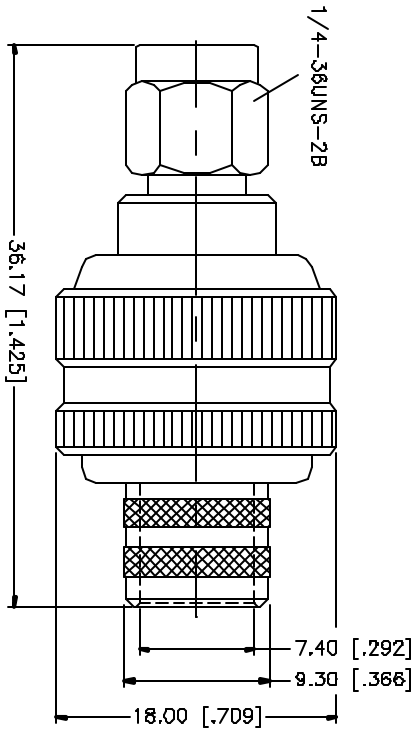
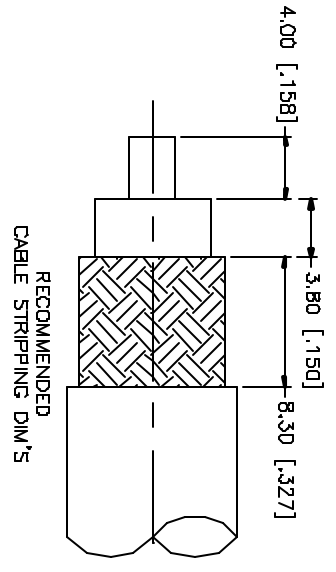


REV.	DATE	DESCRIPTION
NG	01/29/01	INITIAL RELEASE
A	05/01/04	UPDATE DRAWING FORMAT



- NOTES:
1. CRIMPED FERRULE  
HEX CRIMP SIZE .429"
  2. CRIMPED CONTACT PIN  
HEX CRIMP SIZE .118"

NO.	DESCRIPTION	MATERIAL	FINISH	QTY	UNLESS OTHERWISE SPECIFIED DIMENSIONS ARE IN INCHES AND FOR FABRICATED MATERIALS, DIMENSIONS FOR UNMACHINED PARTS	APPROVALS	DATE	PART DESCRIPTION	
8					UNLESS OTHERWISE SPECIFIED DIMENSIONS ARE IN INCHES AND FOR FABRICATED MATERIALS, DIMENSIONS FOR UNMACHINED PARTS D ± .03 B - .03mm ± 0.20mm B - .03mm ± 0.40mm 30 - 120mm ± 0.50mm UNLESS OTHERWISE SPECIFIED DIMENSIONS FOR MACHINED PARTS .020 - .315 = ± 0.007" .315 - 1.180 = ± 0.015" 1.180 - 4.724 = ± 0.020" DD NOT SCALE DRAWING				
7									
6									
5									
4	FERRULE	COPPER	GOLD	1					SMA CRIMP PLUG (FOR BELDEN 9913, 9914, LMR-400) 132298
3	CONTACT PIN	BRASS	GOLD	1					
2	INSULATOR	TEFLON	NATURAL	1					
1	HOUSING/BODY	BRASS	GOLD	1					
	DESCRIPTION	MATERIAL	FINISH	QTY					

**Amphenol Connex**

CAD FILE	C:\132\132298.DWG	DWG. NO.	132298.DWG	REV.	A	SIZE	A	SCALE	NA
----------	-------------------	----------	------------	------	---	------	---	-------	----