

MATERIALS AND FINISHES

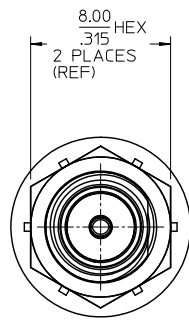
BODY, JAM NUT, CRIMP TUBE BRASS
PLATED PLATED GOLD

CENTER CONTACT BERYLLIUM COPPER
PLATED GOLD

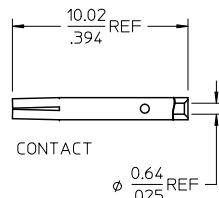
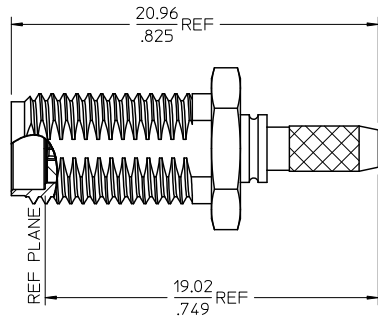
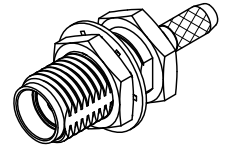
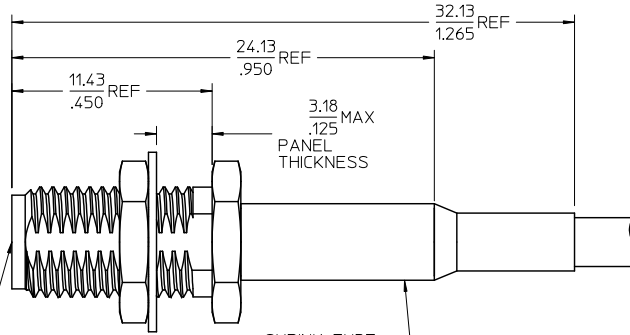
INSULATOR TEFLON

LOCKWASHER PHOSPHER BRONZE
PLATED GOLD

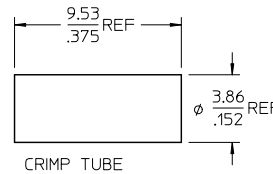
SHRINK TUBE BLACK



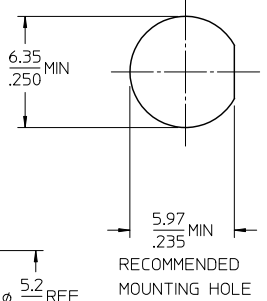
SMA JACK
INTERFACE



CONTACT



CRIMP TUBE



RECOMMENDED
MOUNTING HOLE

SHRINK TUBE
(SEE TABLE)

73251-0933	P/N 73251-0930, BY TRAY (20CAV.)
73251-0932	ONE PIECE 73251-0930 PER BAG
73251-0931	WITHOUT SHRINK TUBE
73251-0930	WITH SHRINK TUBE
PART NO.	PACKAGING

ES-89675-2100	ELECTRO/MECH PERFORM.
ES-89675-1640	ASSEMBLY INSTRUCT.
MIL-STD-348A, FIG. 310.2	INTERFACE
SPECIFICATION	DESCRIPTION

CHG: CLARIFIED BAGGING. EC NO. URF2010-0369 DRW: ROBERTSON 2009/12/18 CHK: SSS 2009/12/18 APPR: JWIENER 2009/12/18 B3	QUALITY SYMBOLS ▽=0 ▽=0	GENERAL TOLERANCES (UNLESS SPECIFIED) <table border="1"> <tr> <td></td> <td>mm</td> <td>INCH</td> </tr> <tr> <td>4 PLACES</td> <td>+---</td> <td>+---</td> </tr> <tr> <td>3 PLACES</td> <td>+---</td> <td>+---</td> </tr> <tr> <td>2 PLACES</td> <td>+---</td> <td>+---</td> </tr> <tr> <td>1 PLACE</td> <td>+---</td> <td>+---</td> </tr> <tr> <td colspan="3">ANGULAR ± 2°</td> </tr> </table>		mm	INCH	4 PLACES	+---	+---	3 PLACES	+---	+---	2 PLACES	+---	+---	1 PLACE	+---	+---	ANGULAR ± 2°			DIMENSION STYLE MM/IN	SCALE METRIC	DESIGN UNITS METRIC	THIRD ANGLE PROJECTION
				mm	INCH																			
4 PLACES	+---	+---																						
3 PLACES	+---	+---																						
2 PLACES	+---	+---																						
1 PLACE	+---	+---																						
ANGULAR ± 2°																								
DRAWN BY TEF CHECKED BY SSS APPROVED BY GMH	DATE 2002/04/03 DATE 2002/04/03 DATE 2002/04/03	TITLE SMA JACK, BLKHD, RG316 50 OHMS, EWR-1691 SMA-JC	MATERIAL NO. SEE TABLE	DOCUMENT NO. SD-73251-093	SHEET NO. 1 OF 1																			

THIS DRAWING CONTAINS INFORMATION THAT IS PROPRIETARY TO MOLEX INCORPORATED AND SHOULD NOT BE USED WITHOUT WRITTEN PERMISSION