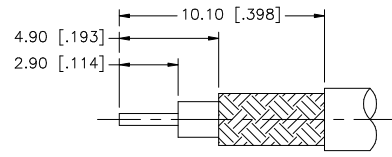
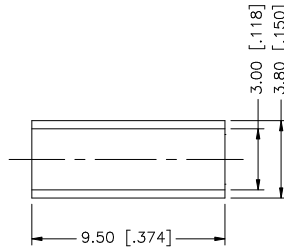
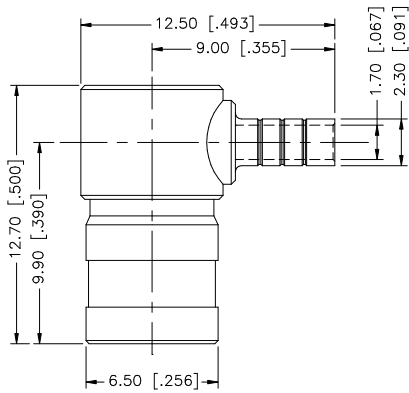
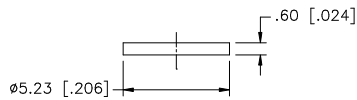
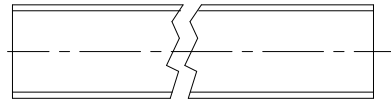


REV.	DATE	DESCRIPTION
A	03/27/05	UPDATE PART DIMENSIONS / DRAWING FORMAT



RECOMMENDED CABLE STRIPPING DIMENSIONS



NOTE:

1. CRIMPED FERRULE HEX CRIMP SIZE .128"
2. CONTACT PIN TO SOLDER

QTY	FINISH	MATERIAL	DESCRIPTION
1	GOLD	DIE CAST	HOUSING
1	GOLD	BRASS	BODY
1	NATURAL	TEFLON	INSULATOR
1	GOLD	BER. COPPER	CONTACT PIN
1	GOLD	COPPER	FERRULE
1	GOLD	BRASS	COVER
1			HEAT SHRINK TUBE
8			

UNLESS OTHERWISE SPECIFIED DIMENSIONS ARE IN MILLIMETERS. DIMENSIONS IN [] ARE IN INCHES AND FOR CUSTOMER REFERENCE ONLY.	APPROVALS	DATE	Amphenol Connex		
UNLESS OTHERWISE SPECIFIED TOLERANCES FOR MILLIMETERS ARE: 0.5 - 8mm ± 0.20mm 8 - 30mm ± 0.40mm 30 - 120mm ± 0.50mm UNLESS OTHERWISE SPECIFIED TOLERANCES FOR INCHES ARE: .020 - .315 = ± 0.007" .315 - 1.180 = ± 0.015" 1.180 - 4.724 = ± 0.020"	DRAWN	G.R.S.	03/27/05	PART DESCRIPTION SMB R/A CRIMP PLUG (FOR RG-179/U CABLE) PART NO. 142194-75	
	CHECKED				
	ISSUED				
	SHEET	1 OF 1			
DO NOT SCALE DRAWING	CAD FILE	C:/142/142194-75.DWG	DWG. NO.	142194-75.DWG	REV. A
					SIZE A
					SCALE NA