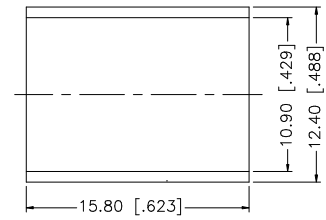
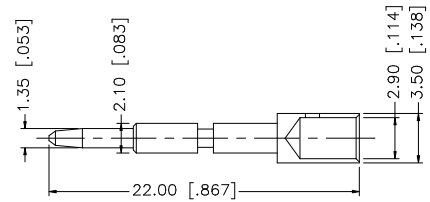
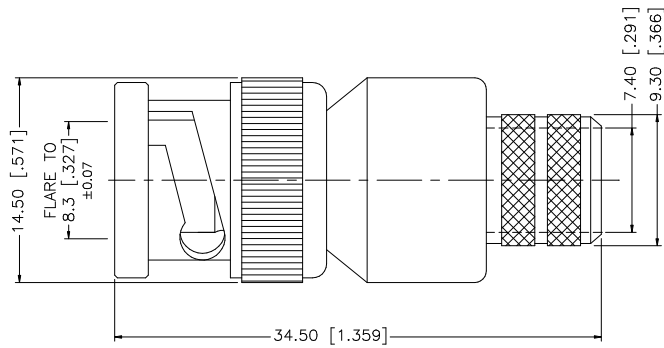
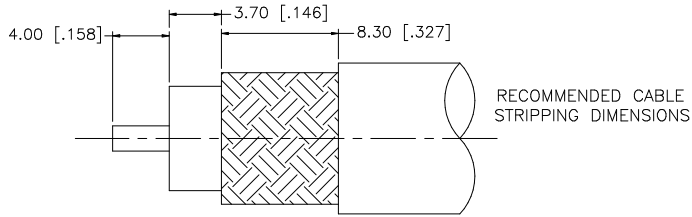


REV.	DATE	DESCRIPTION
A	05/01/04	UPDATE DRAWING FORMAT
B	11/06/06	REVISE CRIMP NOTE 2 TO .118" HEX CRIMP



- CRIMP NOTES:
1. CRIMPED FERRULE
HEX CRIMP SIZE .429"
 2. CRIMPED CONTACT PIN
HEX CRIMP SIZE .118"

DESCRIPTION	MATERIAL	FINISH	QTY	UNLESS OTHERWISE SPECIFIED DIMENSIONS ARE IN MILLIMETERS. DIMENSIONS IN [] ARE IN INCHES AND FOR CUSTOMER REFERENCE ONLY.	APPROVALS	DATE	Amphenol Connex							
8					DRAWN	G.R.S.	11/06/06	BNC CRIMP PLUG (FOR BELDEN 8214, 9913, 9914)						
7					CHECKED		PART DESCRIPTION							
6					ISSUED		PART NO.							
5					SHEET	1 OF 1	112563							
4	FERRULE	COPPER	NICKEL	1			DWG. NO. 112563.DWG							
3	CONTACT PIN	BRASS	GOLD	1			REV. B							
2	INSULATOR	TEFLON	NATURAL	1			SIZE A							
1	BODY	BRASS	NICKEL	1			SCALE NA							
				UNLESS OTHERWISE SPECIFIED TOLERANCES FOR MILLIMETERS ARE: 0.5 - 8mm ± 0.20mm 8 - 30mm ± 0.40mm 30 - 120mm ± 0.50mm	CAD FILE		C:/112/112563.DWG							
				UNLESS OTHERWISE SPECIFIED TOLERANCES FOR INCHES ARE: .020 - .315 = ± 0.007" .315 - 1.180 = ± 0.015" 1.180 - 4.724 = ± 0.020"	DO NOT SCALE DRAWING									