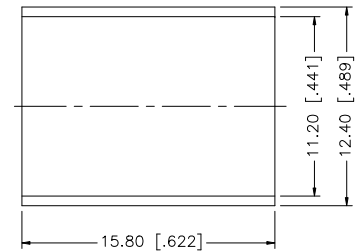
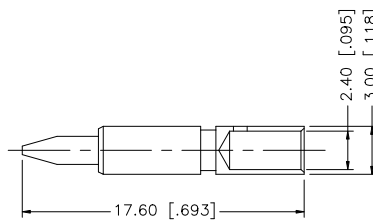
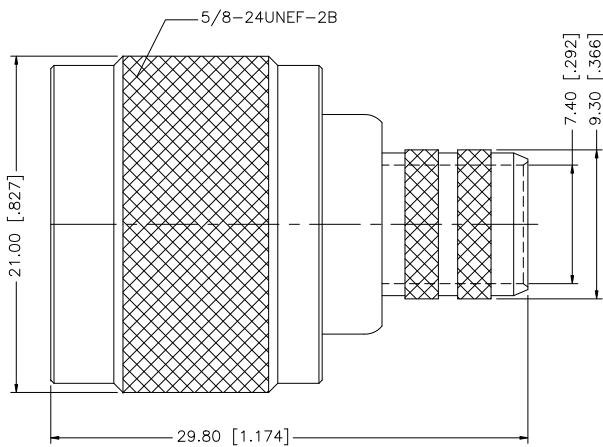
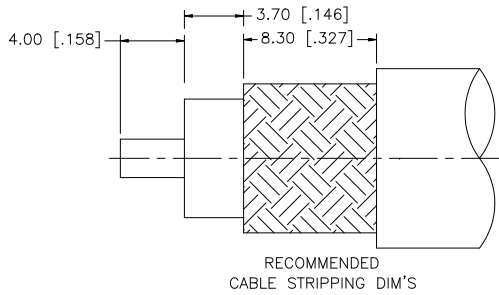


REV.	DATE	DESCRIPTION
A	01/30/04	UPDATE DRAWING FORMAT
B	05/22/05	MODIFY PLATING SPEC
C	07/08/07	REVISE STRIPPING DIMS AND FERRULE



NOTE:

1. CRIMPED FERRULE HEX CRIMP SIZE .429"
2. CRIMPED CONTACT PIN HEX CRIMP SIZE .100"

DESCRIPTION	MATERIAL	FINISH	QTY	UNLESS OTHERWISE SPECIFIED DIMENSIONS ARE IN MILLIMETERS; DIMENSIONS IN [ ] ARE IN INCHES AND FOR CUSTOMER REFERENCE ONLY.	APPROVALS	DATE	Amphenol Connex					
8							<b>N CRIMP PLUG (FOR RG-214/U CABLE)</b>					
7												
6												
5	FERRULE	COPPER	NECOTE	1						PART DESCRIPTION		
4	CONTACT PIN	BRASS	GOLD	1						N CRIMP PLUG (FOR RG-214/U CABLE)		
3	INSULATOR	TEFLON	NATURAL	1						PART NO.		
2	BARREL	BRASS	NEXCOTE	1			172166					
1	BODY	BRASS	NEXCOTE	1			DWG. NO. 172166.DWG					
				DO NOT SCALE DRAWING	CAD FILE	C:/172/172166.DWG	REV. C	SIZE A	SCALE NA			