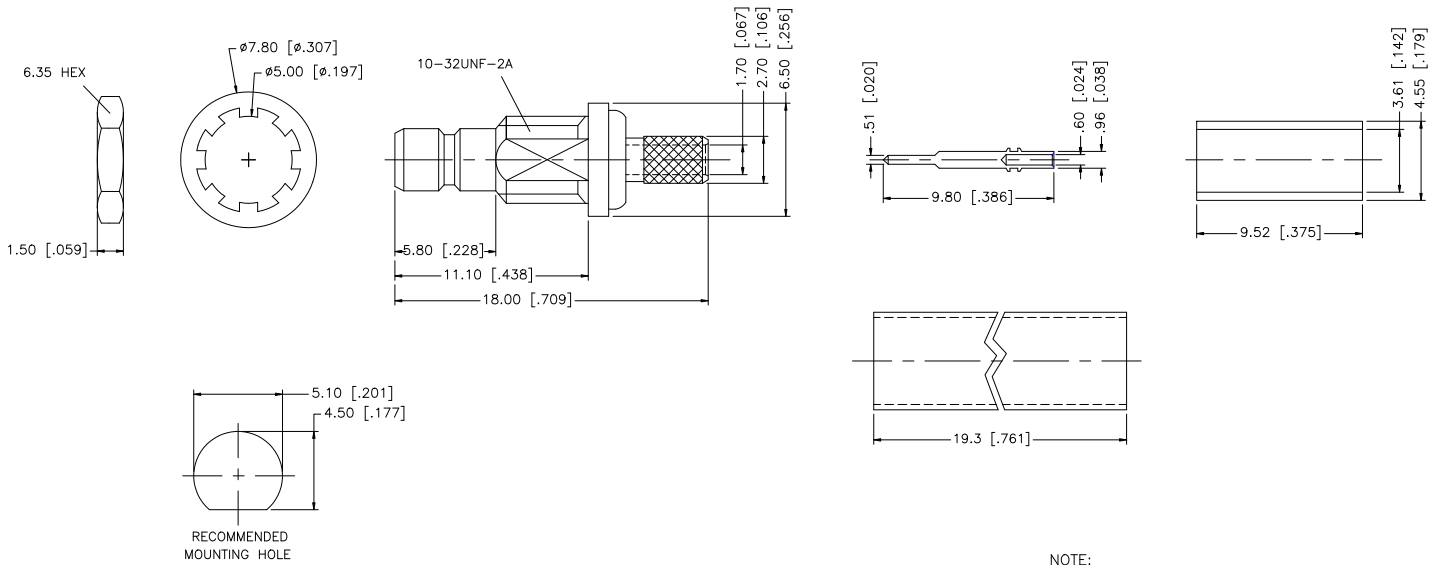
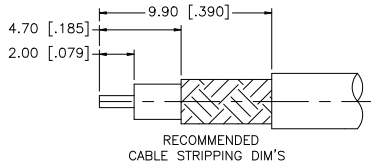


REV.	DATE	ECR NO.	DESCRIPTION
NC	01/25/99	-	INITIAL RELEASE
A	07/20/05	-	UPDATE DRAWING FORMAT
B	05/08/07	-	REVISE BARREL AND FERRULE DIMENSIONS
C	05/25/08	-	REVISE NOTE 1 TO .151" HEX, REMOVE NOTE 2.



- NOTE:
1. CRIMPED FERRULE HEX CRIMP SIZE .151"
 2. (REMOVED)
 3. MAX. PANEL THICKNESS = 2.4mm

DESCRIPTION	MATERIAL	FINISH	QTY	DO NOT SCALE DRAWING	APPROVALS	DATE	Amphenol Connex							
8							SMB BULKHEAD CRIMP JACK (FOR RG-316U/D CABLE)							
7	HEAT SHRINK TUBE		1		DRAWN	G.R.S.					05/25/08	PART DESCRIPTION		
6	FERRULE	COPPER	GOLD	1	CHECKED							PART NO.		
5	HEX NUT	BRASS	GOLD	1	ISSUED							142192		
4	LOCK WASHER	BRASS	GOLD	1	SHEET	1 OF 1						DWG. NO. 142192.DWG		
3	CONTACT PIN	BRASS	GOLD	1								REV. C	SIZE A	SCALE NA
2	INSULATOR	TEFLON	NATURAL	1										
1	BODY	BRASS	GOLD	1										
				UNLESS OTHERWISE SPECIFIED DIMENSIONS ARE IN MILLIMETERS. DIMENSIONS IN [] ARE IN INCHES AND FOR CUSTOMER REFERENCE ONLY.	CAD FILE C:/142/142192.DWG									
				UNLESS OTHERWISE SPECIFIED TOLERANCES FOR MILLIMETERS ARE: 0.5 - 8mm ± 0.20mm 8 - 30mm ± 0.40mm 30 - 120mm ± 0.50mm										
				UNLESS OTHERWISE SPECIFIED TOLERANCES FOR INCHES ARE: .020 - .315 = ± 0.007" .315 - 1.180 = ± 0.015" 1.180 - 4.724 = ± 0.020"										