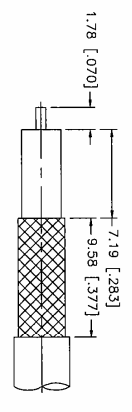
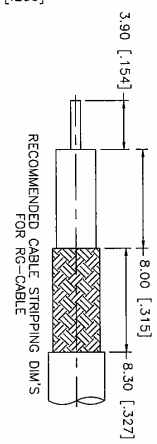
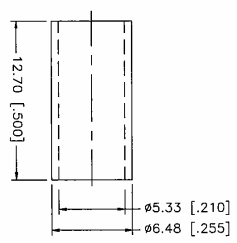
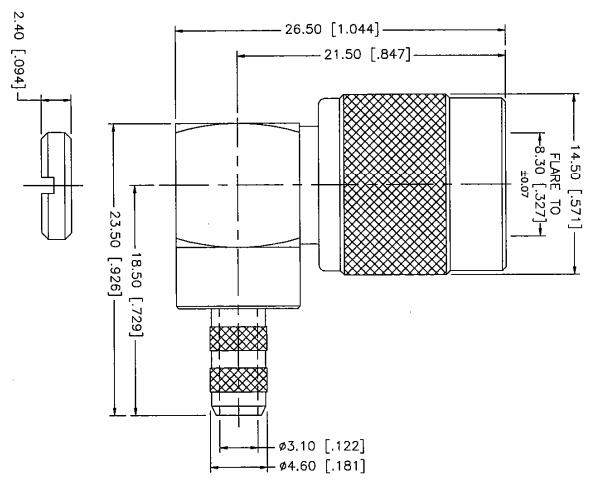


| REV | DATE | DESCRIPTION |
|-----|----------|-----------------|
| NC | 07/23/04 | INITIAL RELEASE |



- NOTES:
1. CRIMPED FERRULE HEX SIZE .213"
 2. SOLDER CENTER CONTACT.

RECOMMENDED CABLE STRIPPING DIM'S
FOR 6 GHz PERFORMANCE CABLE WITH FOLD BRAND.
ELECTRICAL:

- A) IMPEDANCE: 50ohms
- B) FREQUENCY RANGE: DC-6 GHz
- C) VSWR (RETURN LOSS): 1.4 (13.5dB), MAX.
- D) DIELECTRIC WITHSTANDING VOLTAGE: 1500 VRMS, MIN.

| DESCRIPTION | MATERIAL | FINISH | QTY | DO NOT SCALE DRAWING | APPROVALS | DATE | PART DESCRIPTION | DWG NO. | REV | NG | SITE | SCALE |
|-------------|-------------|--------------|---------|----------------------|-----------|----------|---|--------------|-----|----|------|-------|
| 8 | | | | | | | Amphenol Connex TNC REVERSE POLARITY R/A CRIMP PLUG (FOR RG-58/U, 58C/U CABLE) | 122140RP DWG | REV | NG | SITE | SCALE |
| 7 | | | | | | | | | | | | |
| 6 | | | | | | | | | | | | |
| 5 | NUT | BRASS | NICKEL | 1 | CHECKED | 07/23/04 | | | | | | |
| 4 | FERRULE | COPPER | NICKEL | 1 | DESIGN | | | | | | | |
| 3 | CONTACT PIN | PHOS. BRONZE | GOLD | 1 | SHEET | 1 OF 1 | | | | | | |
| 2 | INSULATOR | TEFLON | NATURAL | 1 | | | | | | | | |
| 1 | BODY | BRASS | NICKEL | 1 | | | | | | | | |

UNLESS OTHERWISE SPECIFIED DIMENSIONS ARE IN MILLIMETERS UNLESS INDICATED OTHERWISE IN THE DRAWING.
TOLERANCES FOR MILLIMETERS ARE:
0.3 - 0.9mm ± 0.20mm
0.9 - 1.20mm ± 0.25mm
1.20mm - 3.15mm ± 0.50mm
TOLERANCES FOR INCHES ARE:
.020 - .315 = ± 0.007"
.315 - 1.180 = ± 0.015"
1.180 - 4.724 = ± 0.020"

APPROVALS: DRAWN G.R.S. DATE 07/23/04
CHECKED
DESIGN
SHEET 1 OF 1
DWG FILE C:/122/122140RP DWG

PART NO. 122140RP
REV. NA