

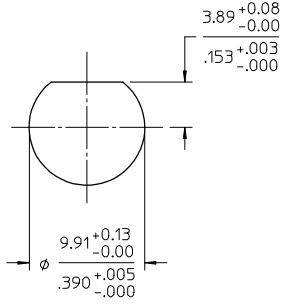
MATERIALS AND FINISHES

BODY, NUT BRASS  
PLATED NICKEL

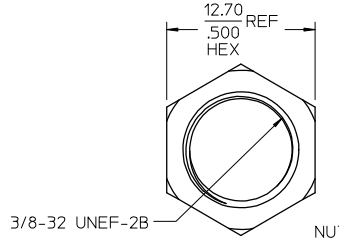
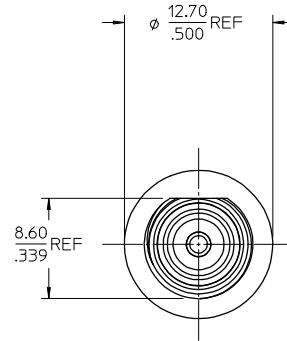
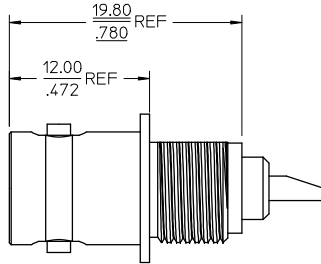
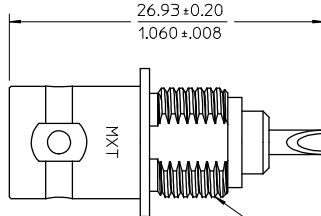
CENTER CONTACT PHOSPHOR BRONZE  
PLATED GOLD

INSULATOR TEFLON

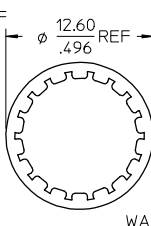
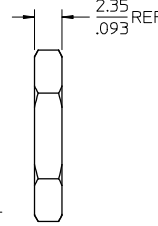
LOCKWASHER PHOSPHOR BRONZE  
PLATED NICKEL



RECOMMENDED MOUNTING HOLE  
MAXIMUM PANEL THICKNESS: 2.65(104)



NUT



WASHER



PS-73598-0019	ELETR/MECH PERFORM.
SPECIFICATION	DESCRIPTION

73171-3080	73100-0195, ONE PER BAG
73100-0195	BULK
PART NO.	PACKAGING

CHG: REDREW IN SD  
ADDED P/N  
73171-3080  
DIM 26.93±0.20  
WAS 27.55±0.20  
EC NO: UPE2007-0396  
DRAWN/CLERK: 2007/05/01  
CHKD/SBAR: 2007/05/01  
APPR: JWI/ENER

QUALITY SYMBOLS	GENERAL TOLERANCES (UNLESS SPECIFIED)	DIMENSION STYLE	SCALE	DESIGN UNITS	THIRD ANGLE PROJECTION
▽=0	mm	MM/IN	METRIC		
▽=0	INCH				
	4 PLACES ± --- ± ---	DRAWN BY	DATE	TITLE	
	3 PLACES ± --- ± ---	NORMAN	1995/01/05	BNC JACK, BULKHEAD WITH SOLDER POT, 50 OHMS BNC-JR/BK	
	2 PLACES ± --- ± ---	CHECKED BY	DATE	MOLEX INCORPORATED	
	1 PLACE ± --- ± ---	SAM			
	ANGULAR ± 2 °	APPROVED BY	DATE		
		WALLY			
DRAFT WHERE APPLICABLE MUST REMAIN WITHIN DIMENSIONS	SEE TABLE	MATERIAL NO.	DOCUMENT NO.	SHEET NO.	
			SD-73100-0195	1 OF 1	
		THIS DRAWING CONTAINS INFORMATION THAT IS PROPRIETARY TO MOLEX INCORPORATED AND SHOULD NOT BE USED WITHOUT WRITTEN PERMISSION			