

13 12 11 10 9 8 7 6 5 4 3 2 1

MATERIALS AND FINISHES

BODY ZINC ALLOY
PLATED NICKEL

HOUSING PLOYESTER BUTYLENE TEREPHTALATE
COLOR: BLACK

CENTER CONTACT PHOSPHOR BRONZE
PLATED GOLD

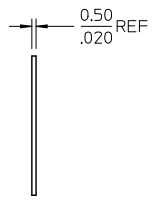
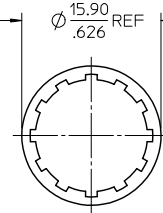
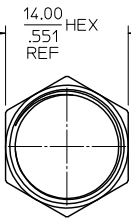
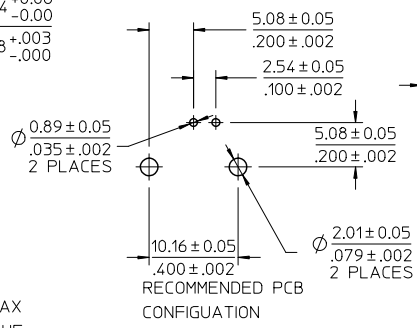
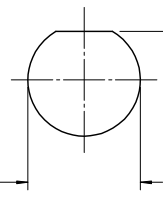
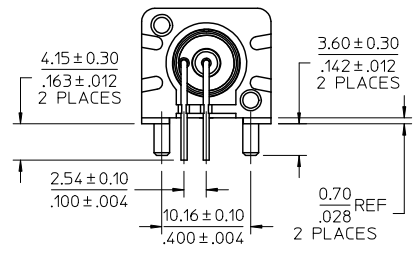
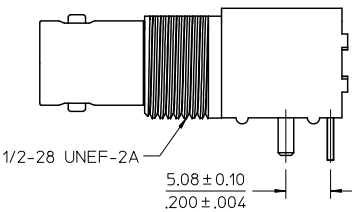
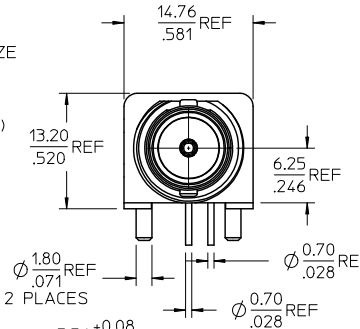
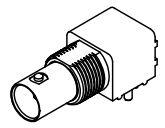
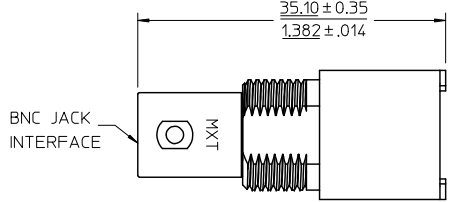
INSULATOR POLYPROPYLENE (94-V2)

MOUNTING POST BRASS
PLATED TIN

SOLDER TAIL BRASS WIRE
PLATED TIN

LOCKWASHER PHOSPHOR BRONZE
PLATED NICKEL

JAM NUT BRASS
PLATED NICKEL



RECOMMENDED MOUNTING HOLE
PANEL THICKNESS: 5.50(.217) MAX
RECOMMENDED MOUNTING TORQUE:
0.56 N (5 INCH-LBS) MAX

RECOMMENDED PCB
CONFIGURATION

JAM NUT

LOCKWASHER

73171-6090	73100-0067 W/O NUT AND WASHER, PACKAGE BY TRAY
73171-2980	73100-0067, ONE PER BAG
73100-0067	PLASTIC TRAYS
PART NO.	PACKAGING

ES-73599-0000	INTERFACE
PS-73598-0051	PRODUCT SPECIFICATION
SPECIFICATION	DESCRIPTION

ADDED P/N 73171-6090	QUALITY SYMBOLS
EC NO.: UBF2009-0317	GENERAL TOLERANCES (UNLESS SPECIFIED)
DRW:SELIN	4 PLACES ±
CHKD:CHANG	3 PLACES ±
APP:HUANG	2 PLACES ±
REV	1 PLACE ±
	ANGULAR ± 2°

DATE	2008/12/16	SCALE	DESIGN UNITS	THIRD ANGLE PROJECTION
DRAWN BY	C.M. HUNG	DIMENSION STYLE	METRIC	
CHECKED BY		DATE	1993/02/01	TITLE
APPROVED BY	KWH	DATE	1993/04/01	BNC JACK, R/A, PCB RECEPTACLE, 75 OHMS BNC-J/RA/PCB
MATERIAL NO.	SEE TABLE	MOLEX INCORPORATED		
DOCUMENT NO.	SD-73100-0067			
SHEET NO.	1 OF 1			