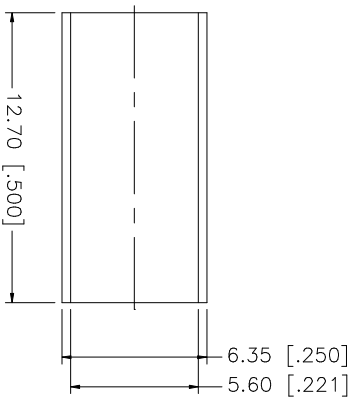
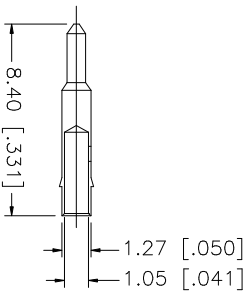
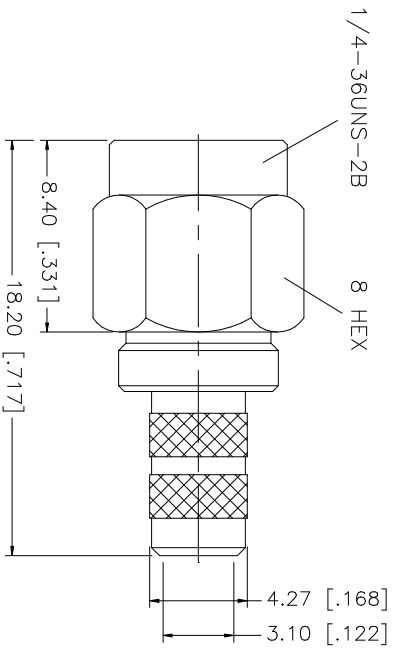
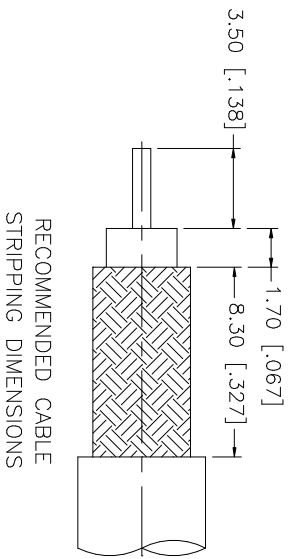


REV.	DATE	DESCRIPTION
A	04/31/03	UPDATE DRAWING FORMAT



- CRIMP NOTES:
1. CRIMPED FERRULE
HEX CRIMP SIZE .213"
 2. SOLDER CENTER CONTACT

Amphenol Connex

PART DESCRIPTION
SMA CRIMP PLUG
(FOR RG-55/U, 142A/U, 223/U, 400/U)

PART NO. 132195

UNLESS OTHERWISE SPECIFIED DIMENSIONS ARE IN INCHES AND FOR CUSTOMER REFERENCE ONLY.	UNLESS OTHERWISE SPECIFIED TOLERANCES FOR MILLIMETERS ARE:	UNLESS OTHERWISE SPECIFIED TOLERANCES FOR INCHES ARE:	APPROVALS	DATE	DWG. NO.	REV.	SIZE	SCALE
8			DRAWN	G.R.S.	04/31/03	C:/132/132195.DWG	A	NA
7			CHECKED					
6	FERRULE	COPPER	ISSUED					
5	GASKET	SILICONE	SHEET	1 OF 1				
4	RETAINER RING	BEF. COPPER						
3	CONTACT PIN	BRASS						
2	INSULATOR	TEFLON						
1	BODY	BRASS						
DESCRIPTION		MATERIAL	FINISH	QTY	DO NOT SCALE DRAWING			