

MATERIALS AND FINISHES

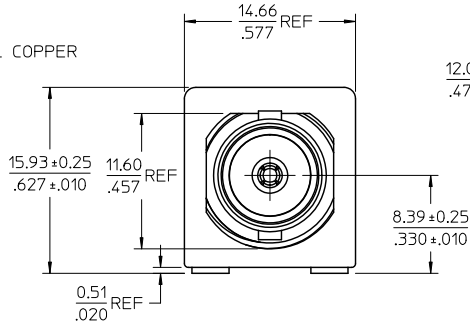
BODY ZINC ALLOY
PLATED NICKEL

CENTER CONTACT PHOSPHOR BRONZE
PLATED GOLD

INSULATOR POLYPROPYLENE (94V0)

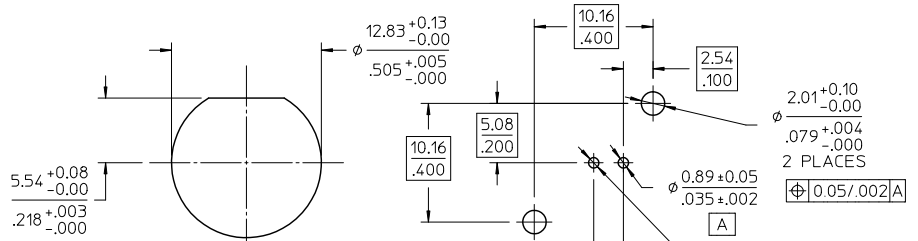
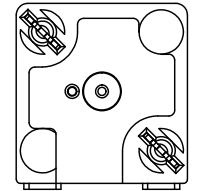
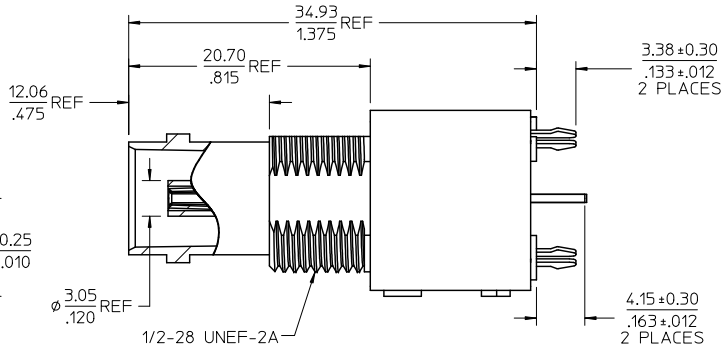
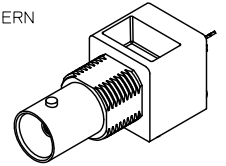
BOARD LOCK PHOSPHOR BRONZE
PLATED TIN

SOLDER TAIL COPPER
PLATED TIN



BNC JACK
75 OHMS
INTERFACE

LEADS ARE TO BE
ADJUSTED TO FIT
PCB PATTERN



PART # 73101-0030

RECOMMENDED MOUNTING HOLE
MAXIMUM PANEL THICKNESS: 5.40(.203)
RECOMMENDED MOUNTING TORQUE:
1.36 N-m(12 INCH-LBS)

RECOMMENDED PCB HOLE
CONFIGURATION

PS-73598-0051	PRODUCT SPECIFICATION
SPECIFICATION	DESCRIPTION

CHG: CORRECT TYPO OF SOLDER TAIL PER RF11-E022 EC NO: 2010/09/28 DRW: RYEH CHK: JHUANG APPR: JHUANG 2010/09/30 2010/09/30	QUALITY SYMBOLS ▽=0 ▽=0	GENERAL TOLERANCES (UNLESS SPECIFIED)		DIMENSION STYLE MM/IN		SCALE	DESIGN UNITS	THIRD ANGLE PROJECTION
		4 PLACES ± --- ± --- 3 PLACES ± --- ± --- 2 PLACES ± --- ± --- 1 PLACE ± --- ± ---	mm INCH	DRAWN BY WILSON	DATE 1996/03/01	TITLE	METRIC	BNC JACK, VERTICAL PCB, DIE CAST, 75 OHMS BNC-J/PCB
		ANGULAR ± 2 °		APPROVED BY JHUANG	DATE 2010/09/30	MOLEX INCORPORATED		
		DRAFT WHERE APPLICABLE MUST REMAIN WITHIN DIMENSIONS		MATERIAL NO. 731010030	DOCUMENT NO. SD-73101-003			SHEET NO. 1 OF 1
THIS DRAWING CONTAINS INFORMATION THAT IS PROPRIETARY TO MOLEX INCORPORATED AND SHOULD NOT BE USED WITHOUT WRITTEN PERMISSION								