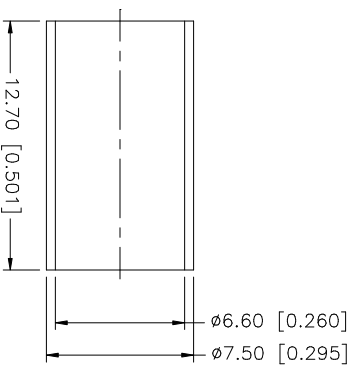
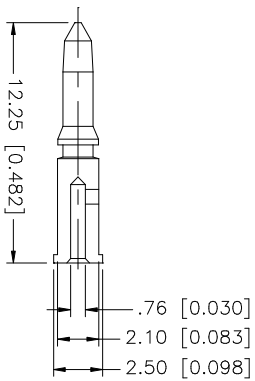
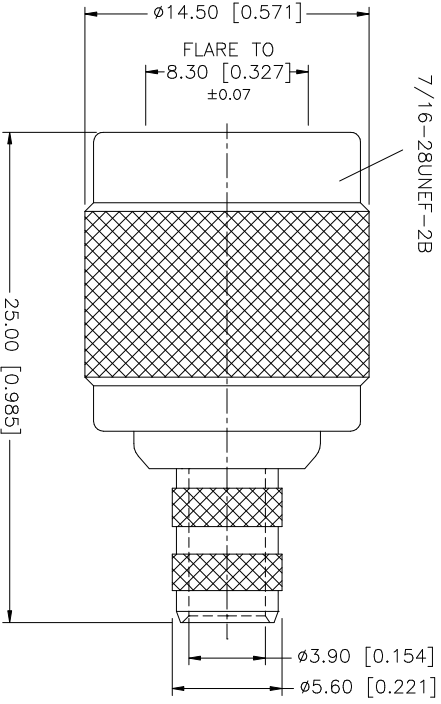
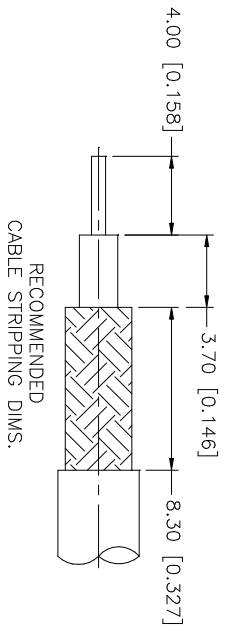


REV.	DATE	DESCRIPTION
NC	07/31/05	INITIAL RELEASE
A	06/01/06	ADD CABLE DESCRIPTION



- NOTE:
1. CRIMPED FERRULE
HEX CRIMP SIZE .255"
 2. CRIMPED CONTACT PIN
HEX CRIMP SIZE .068"

QTY	FINISH	MATERIAL	DESCRIPTION
1	NICKEL	COPPER	FERRULE
1	GOLD	BRASS	CONTACT PIN
1	NATURAL	DELFIN	INSULATOR
1	NICKEL	BRASS	SHELL/BODY

UNLESS OTHERWISE SPECIFIED, DIMENSIONS ARE IN INCHES AND FOR CUSTOMER REFERENCE ONLY.	APPROVALS	DATE	Amphenol Connex TNC CRIMP PLUG (FOR RG-59/U CABLE) 122111
UNLESS OTHERWISE SPECIFIED, DIMENSIONS ARE IN MILLIMETERS AND FOR CUSTOMER REFERENCE ONLY.	DRAWN	06/01/06	
TOLERANCES FOR MILLIMETERS ARE: 0.3 - 8mm ± 0.20mm 8 - 30mm ± 0.40mm 30 - 120mm ± 0.50mm	CHECKED		
TOLERANCES FOR INCHES ARE: .020 - .315 = ± 0.007" .315 - 1.180 = ± 0.015" 1.180 - 4.724 = ± 0.020"	ISSUED		
DO NOT SCALE DRAWING	SHEET	1 OF 1	
	CAD FILE	C:/122/122111.DWG	
	DWG. NO.	122111.DWG	
	REV.	NC	
	SIZE	A	
	SCALE	NA	