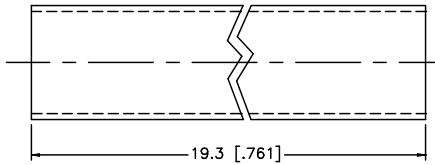
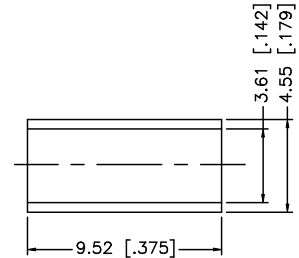
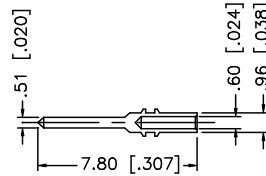
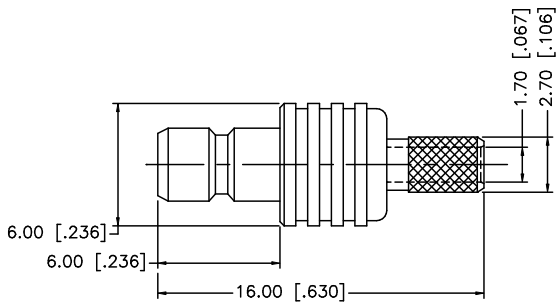
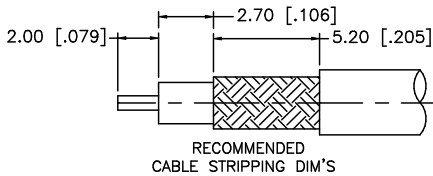


REV.	DATE	DESCRIPTION
NC	04/15/99	INITIAL RELEASE
A	07/21/05	UPDATE DRAWING FORMAT
B	05/08/07	REVISE BARREL, FERRULE DIMENSIONS



- NOTE:
 1. CRIMPED FERRULE HEX CRIMP SIZE .128"
 2. CRIMPED CONTACT PIN SQ. CRIMP SIZE 0.7mm

DESCRIPTION	MATERIAL	FINISH	QTY	UNLESS OTHERWISE SPECIFIED DIMENSIONS ARE IN MILLIMETERS. DIMENSIONS IN [] ARE IN INCHES AND FOR CUSTOMER REFERENCE ONLY.	APPROVALS	DATE	Amphenol Connex							
8					DRAWN	G.R.S.	05/08/07	PART DESCRIPTION SMB CRIMP JACK (FOR 316U/D CABLE)						
7					CHECKED									
6					ISSUED									
5	HEAT SHRINK TUBE		1	UNLESS OTHERWISE SPECIFIED TOLERANCES FOR MILLIMETERS ARE: 0.5 - 8mm ± 0.20mm 8 - 30mm ± 0.40mm 30 - 120mm ± 0.50mm	SHEET	1 OF 1								
4	FERRULE	COPPER	GOLD	1										
3	CONTACT PIN	BRASS	GOLD 30/u	1			PART NO.	142190						
2	INSULATOR	TEFLON	NATURAL	1	UNLESS OTHERWISE SPECIFIED TOLERANCES FOR INCHES ARE: .020 - .315 = ± 0.007" .315 - 1.180 = ± 0.015" 1.180 - 4.724 = ± 0.020"									
1	BODY	BRASS	GOLD	1			DWG. NO.	142190.DWG	REV.	B	SIZE	A	SCALE	NA
				DO NOT SCALE DRAWING	CAD FILE	C:/142/142190.DWG								