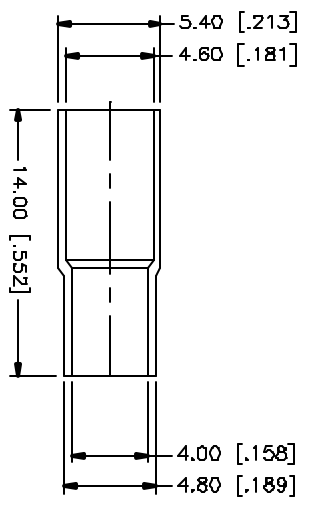
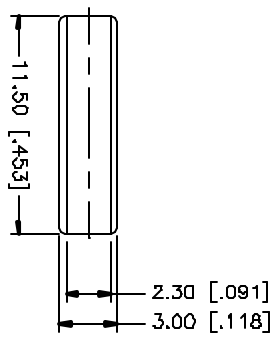
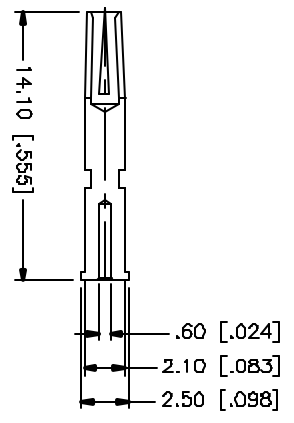
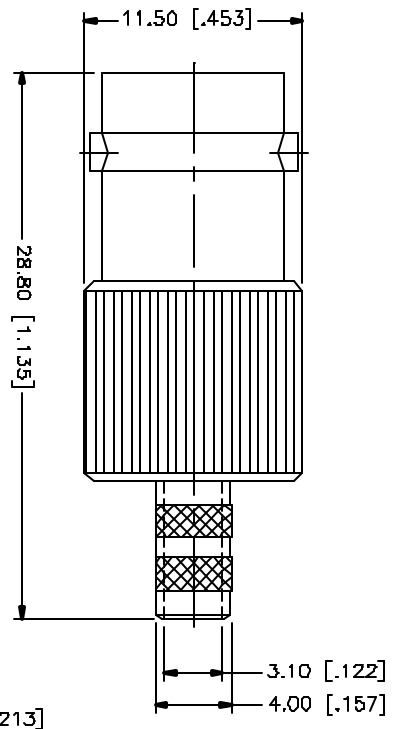
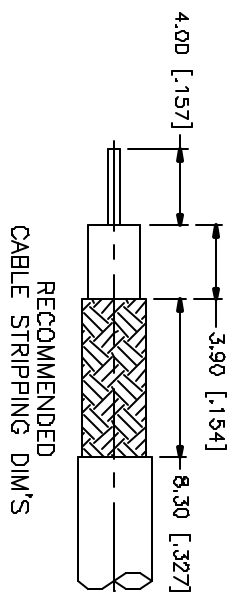


| REV. | DATE | DESCRIPTION |
|------|----------|-----------------------|
| NC | 03/08/05 | UPDATE DRAWING FORMAT |



- CRIMP NOTES:
1. CRIMPED FERRULE
HEX CRIMP SIZE .187"
 2. CRIMPED CONTACT PIN,
HEX CRIMP SIZE .068"

| QTY | FINISH | MATERIAL | DESCRIPTION |
|-----|---------|--------------|--------------|
| 1 | NICKEL | COPPER | FERRULE |
| 1 | NATURAL | DELFIN | SLEEVE |
| 1 | NATURAL | DELFIN | INSULATOR |
| 1 | GOLD | PHOS. BRONZE | CONTACT PIN |
| 1 | NICKEL | BRASS | HOUSING/BODY |

| APPROVALS | DATE |
|--------------|----------|
| DRWN G.R.S. | 03/08/05 |
| CHECKED | |
| RELEASED | |
| SHEET 1 OF 1 | |

| QAD FILE | DWG NO. | REV. | NC | SIZE | BSCALE |
|-------------------|------------|------|----|------|--------|
| C:/112/112638.DWG | 112638.DWG | | | A | NA |

Amphenol Connex

BNC CRIMP JACK
(FOR B573945, Q841 MINI MAX 500 CABLE)

PART NO. 112638

UNLESS OTHERWISE SPECIFIED DIMENSIONS ARE IN MILLIMETERS. DIMENSIONS IN [] ARE IN INCHES AND NOT DECIMAL EQUIVALENT DIM. TOLERANCES FOR MILLIMETERS ARE:
 0.5 - 3.0mm ± 0.20mm
 3.0 - 12.0mm ± 0.30mm
 UNLESS OTHERWISE SPECIFIED TOLERANCES FOR INCHES ARE:
 .020 - .310 ± 0.007"
 .310 - 1.180 ± 0.015"
 1.180 - 4.724 ± 0.020"