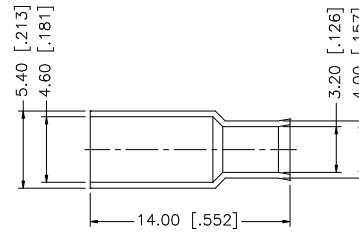
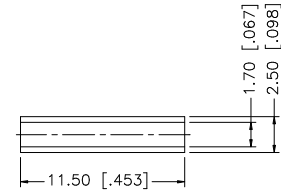
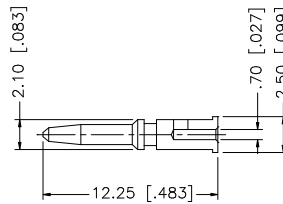
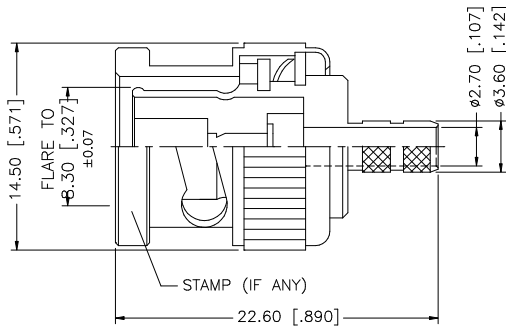
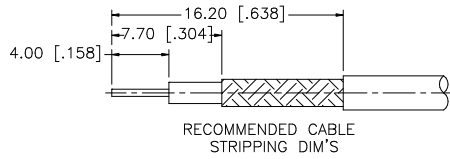


REV.	DATE	DESCRIPTION
NC	02/24/03	INITIAL RELEASE
A	01/23/06	MODIFY CRIMP NOTES
B	03/25/07	REVISE CONTACT PIN, SLEEVE, STRIPPING DIMENSIONS



NOTE:

1. CRIMPED FERRULE
HEX CRIMP SIZE .178"
2. CRIMPED CONTACT PIN
HEX CRIMP SIZE .068"

8				UNLESS OTHERWISE SPECIFIED DIMENSIONS ARE IN MILLIMETERS. DIMENSIONS IN [] ARE IN INCHES AND FOR CUSTOMER REFERENCE ONLY.	APPROVALS	DATE	<h2 style="color: blue;">Amphenol Connex</h2>	
7				UNLESS OTHERWISE SPECIFIED TOLERANCES FOR MILLIMETERS ARE: 0.5 - 8mm ± 0.20mm 8 - 30mm ± 0.40mm 30 - 120mm ± 0.50mm	DRAWN	G.R.S.		03/25/07
6				UNLESS OTHERWISE SPECIFIED TOLERANCES FOR INCHES ARE: .020 - .315 = ± 0.007" .315 - 1.180 = ± 0.015" 1.180 - 4.724 = ± 0.020"	CHECKED			
5	FERRULE	COPPER	NICKEL	1	ISSUED			PART DESCRIPTION
4	SLEEVE	DELTRIN	NATURAL	1	SHEET	1 OF 1		BNC CRIMP PLUG (FOR RG-316/U DOUBLE BRAIDED CABLE)
3	CONTACT PIN	BRASS	GOLD	1			PART NO.	
2	INSULATOR	DELTRIN	NATURAL	1			112512	
1	SHELL/BODY	BRASS	NICKEL	1			DWG. NO.	
	DESCRIPTION	MATERIAL	FINISH	QTY	CAD FILE	C:/112/112512.DWG	112512.DWG	
				DO NOT SCALE DRAWING			REV. B	
							SIZE A	
							SCALE NA	