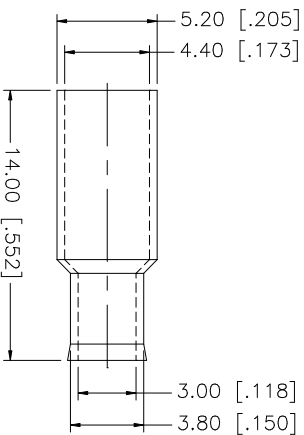
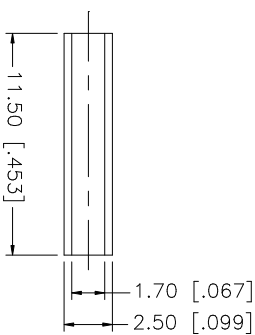
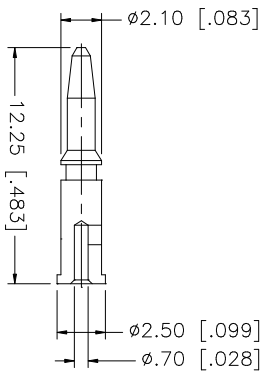
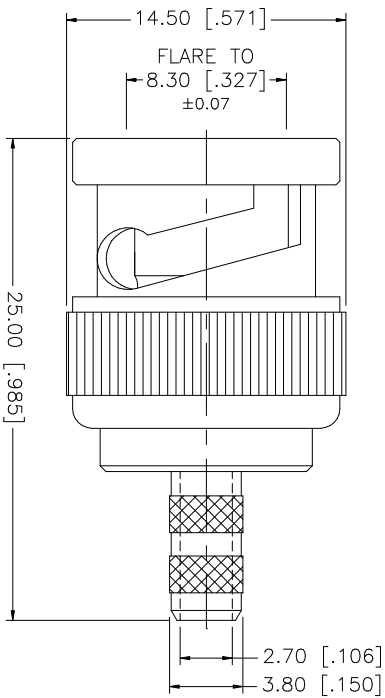
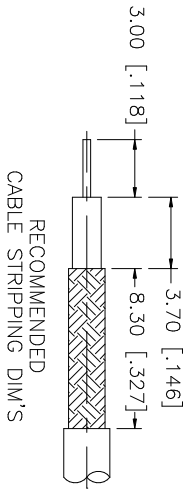


REV.	DATE	DESCRIPTION
A	02/28/02	MODIFY CONTACT PIN AND BODY LENGTH
B	04/04/03	UPDATE DRAWING FORMAT



- CRIMP NOTES:
1. CRIMPED FERRULE
HEX CRIMP SIZE .178"
 2. CRIMPED CONTACT PIN
HEX CRIMP SIZE .068"

DESCRIPTION	MATERIAL	FINISH	QTY	UNLESS OTHERWISE SPECIFIED DIMENSIONS ARE IN MILLIMETERS. DIMENSIONS IN [] ARE IN INCHES AND FOR CUSTOMER REFERENCE ONLY. TOLERANCES FOR MILLIMETERS ARE:	APPROVALS	DATE	PART DESCRIPTION			
8				0.5 - 8mm ± 0.20mm			Amphenol Connex BNC CRIMP PLUG - 50 ohms (RG 174/U, 188/U, 316/U CABLE) 112134			
7				8 - 30mm ± 0.40mm						
6	FERRULE	COPPER	1	30 - 120mm ± 0.50mm						
5	SLEEVE	DELIRIN	1	UNLESS OTHERWISE SPECIFIED TOLERANCES FOR INCHES ARE:						
4	CONTACT PIN	BRASS	1	.020 - .315 = ± 0.007"						
3	INSULATOR	DELIRIN	1	.315 - 1.180 = ± 0.015"						
2	SHELL/BODY	BRASS	1	1.180 - 4.724 = ± 0.020"						
1	DESCRIPTION			DO NOT SCALE DRAWING						
				CAD FILE	C:/112/112134.DWG	DWG. NO.	112134.DWG			
					REV.	B	SIZE	A	SCALE	NA