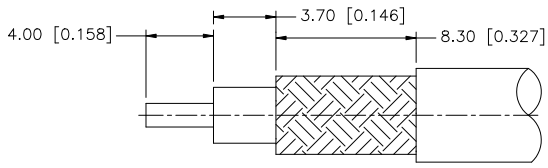
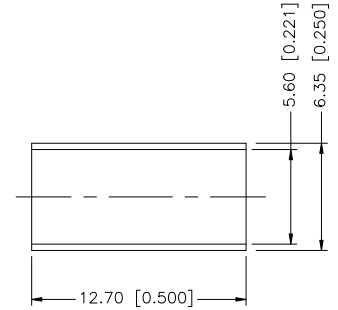
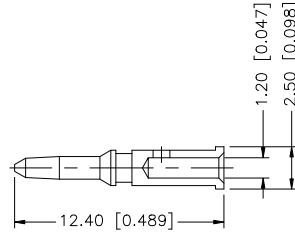
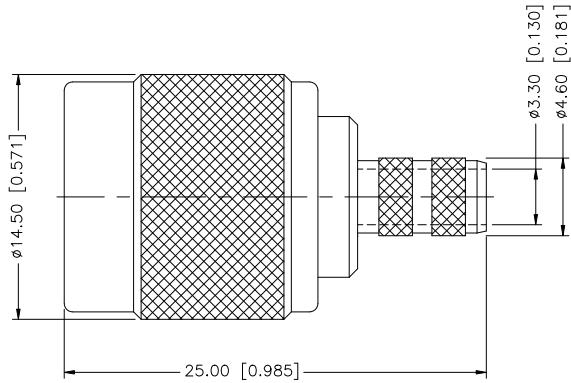


REV.	DATE	ECR NO.	DESCRIPTION
NC	08/04/98	-	INITIAL RELEASE
A	03/27/05	100025	UPDATE DRAWING FORMAT



RECOMMENDED  
CABLE STRIPPING DIM'S



8																			
7																			
6																			
5																			
4	FERRULE	BRASS	NICKEL	1	<small>UNLESS OTHERWISE SPECIFIED DIMENSIONS ARE IN MILLIMETERS; DIMENSIONS IN (") ARE IN INCHES AND FOR CUSTOMER REFERENCE ONLY.</small> <small>UNLESS OTHERWISE SPECIFIED TOLERANCES FOR MILLIMETERS ARE:</small> 0.5 - 8mm ± 0.20mm 8 - 30mm ± 0.40mm 30 - 120mm ± 0.50mm <small>UNLESS OTHERWISE SPECIFIED TOLERANCES FOR INCHES ARE:</small> .020 - .315 = ± 0.007" .315 - 1.180 = ± 0.015" 1.180 - 4.724 = ± 0.020" DO NOT SCALE DRAWING	APPROVALS	DATE	<h1 style="color: blue;">Amphenol Connex</h1>											
3	CONTACT PIN	BRASS	GOLD	1		DRAWN	GRS		06/04/08										
2	INSULATOR	PTFE	NATURAL	1		CHECKED													
1	BODY	BRASS	NICKEL	1		ISSUED													
	DESCRIPTION	MATERIAL	FINISH	QTY		SHEET	1 OF 1												
PART DESCRIPTION <h2 style="text-align: center;">TNC CRIMP PLUG - LMR 200</h2>																			
PART NO. <h2 style="text-align: center;">122410</h2>																			
DWG. NO. 122410.DWG      REV. A      SIZE A      SCALE NA																			
CAD FILE C:/122/122410.DWG																			