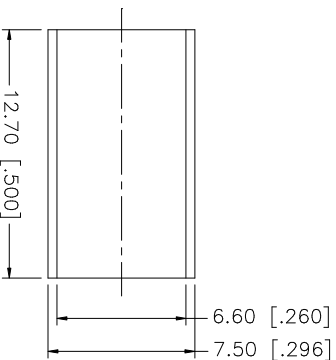
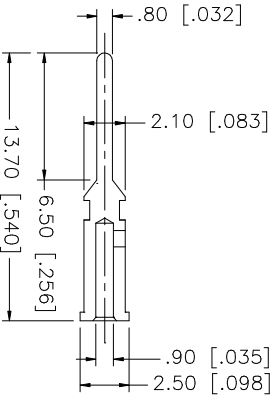
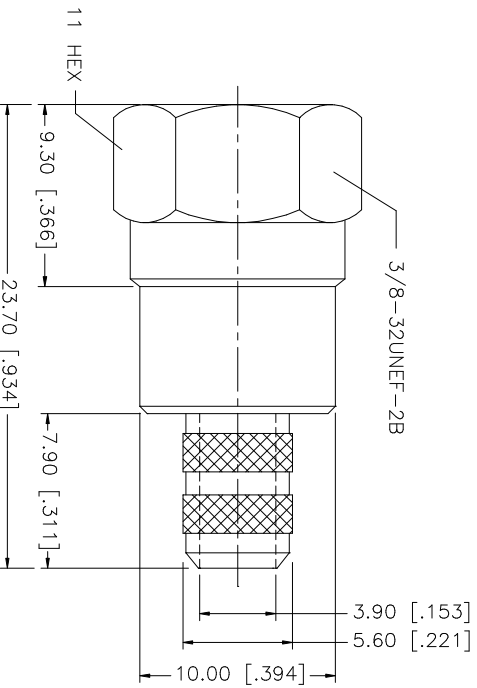
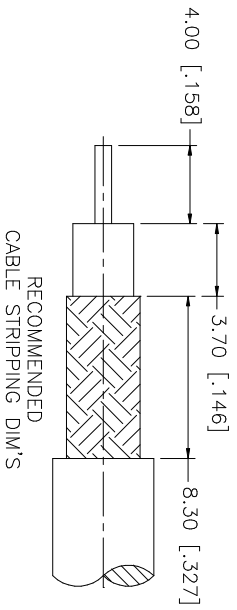


REV.	DATE	DESCRIPTION
A	03/06/03	UPDATE DRAWING FORMAT



- NOTE:
1. CRIMPED FERRULE
HEX CRIMP SIZE ".255"
 2. CRIMPED CONTACT PIN
HEX CRIMP SIZE ".068"

DESCRIPTION	MATERIAL	FINISH	QTY	UNLESS OTHERWISE SPECIFIED DIMENSIONS ARE IN MILLIMETERS. DIMENSIONS IN [] ARE IN INCHES AND FOR CUSTOMER REFERENCE ONLY. TOLERANCES FOR MILLIMETERS ARE:	APPROVALS	DATE	PART DESCRIPTION			
8				0.5 - 8mm ± 0.20mm	DRAWN G.R.S.	03/06/03	F CRIMP PLUG (FOR RG-59/U 20AWG - BELDEN 9100)			
7			8 - 30mm ± 0.40mm							
6			30 - 120mm ± 0.50mm							
5	BRASS	NICKEL	1	UNLESS OTHERWISE SPECIFIED DIMENSIONS ARE IN MILLIMETERS. DIMENSIONS IN [] ARE IN INCHES AND FOR CUSTOMER REFERENCE ONLY. TOLERANCES FOR MILLIMETERS ARE:	CHECKED					
4	BRASS	NICKEL	1	0.20 - .315 = ± 0.007"	ISSUED					
3	BRASS	GOLD	1	.315 - 1.180 = ± 0.015"	SHEET 1 OF 1					
2	INSULATOR	DELRIN	1	1.180 - 4.724 = ± 0.020"	CAD FILE					
1	SHELL/BODY	BRASS	1	DO NOT SCALE DRAWING	C:/222/222119.DWG					
DESCRIPTION				MATERIAL	FINISH	QTY	DWG. NO.	REV.	SIZE	SCALE
				BRASS	NICKEL	1	222119.DWG	A	A	NA

Amphenol Connex

F CRIMP PLUG
(FOR RG-59/U 20AWG - BELDEN 9100)

222119