

Technical drawing of a shaft assembly. The shaft has a total length of 5.00 [1.97]. It features a central section with a diameter of 1.20 [0.47] and a length of 2.00 [0.79]. The shaft is shown with a cross-section of a pulley or gear on the right end.

3/8-32UNEF-2B

11 HEX

10.60 [.417]

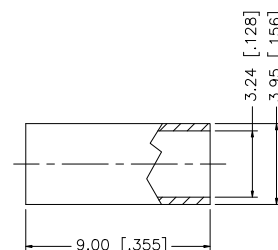
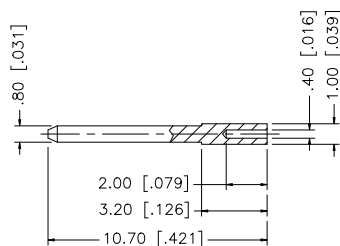
7.50 [.295]

14.20 [.560]

1.72 [.068]

2.77 [.109]

9.50 [.374]



				UNLESS OTHERWISE SPECIFIED DIMENSIONS ARE IN MILLIMETERS; DIMENSIONS IN [] ARE IN INCHES AND FOR CUSTOMER REFERENCE ONLY.		APPROVALS		DATE		<h1>Amphenol Connex</h1>							
8						DRAWN	GRS	12/09/08						F CRIMP PLUG (RG-179/U CABLE - 75ohm)			
7						CHECKED											
6						UNLESS OTHERWISE SPECIFIED TOLERANCES FOR MILLIMETERS ARE: 0.5 - 8mm ± 0.20mm 8 - 30mm ± 0.40mm 30 - 120mm ± 0.50mm				PART DESCRIPTION							
5	FERRULE	COPPER	NICKEL	1					ISSUED								
4	RING	BRASS	NICKEL	1					SHEET 1 OF 1								
3	CONTACT PIN	BRASS	GOLD	1					PART NO. 222113								
2	DIELECTRIC	PTFE	NATURAL	1													
1	BODY	BRASS	NICKEL	1													
					UNLESS OTHERWISE SPECIFIED TOLERANCES FOR INCHES ARE: .020 - .315 = ± 0.007" .315 - 1.180 = ± 0.015" 1.180 - 4.724 = ± 0.020"												
					DO NOT SCALE DRAWING												
					CAD FILE C:/222/222113.DWG				DWG. NO. 222113.DWG								
									REV. F		SIZE A		SCALE NA				